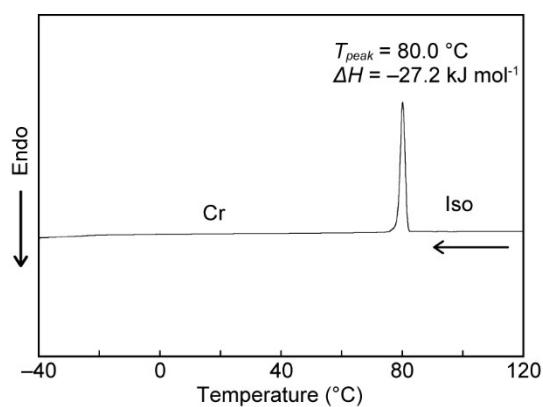
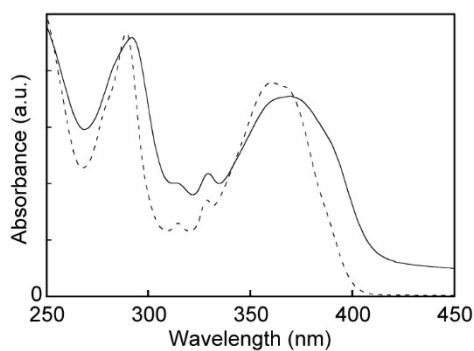


# A 1,6-Diphenylpyrene-Based, Photoluminescent Cyclophane Showing a Nematic Liquid-Crystalline Phase at Room Temperature

Yoshimitsu Sagara <sup>1,2,\*</sup>, Tatsuya Muramatsu <sup>1</sup> and Nobuyuki Tamaoki <sup>1</sup>



**Figure S1.** DSC trace of compound **2** on cooling. Scanning rate was 5 °C·min<sup>-1</sup>.



**Figure S2.** Absorption spectra of cyclophane **1** in the nematic phase (solid line) and in chloroform ( $c = 1.0 \times 10^{-5}\text{ M}$ ) (dotted line).