

Figure S1 The surgical procedure. (a) Anesthetic injection. (b) The skin and subcutaneous tissue were cut. (c) The cartilage scaffold was embedded between the deep fascia and sarcosis. (d) The skin incisions were sutured with 3-0 fine silk thread.

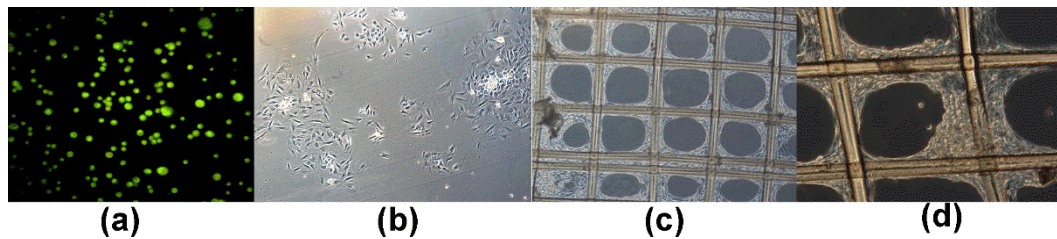


Figure S2 (a) The survival rate of primary chondrocytes was observed with a fluorescence microscope with acridine orange-propidium iodide (AO-PI) staining. (b) Primary chondrocytes expanded and adhered to the wall. (c) Primary chondrocytes spread out on the wall attached to gauze. (d) Primary chondrocytes spread out on the wall attached to gauze.

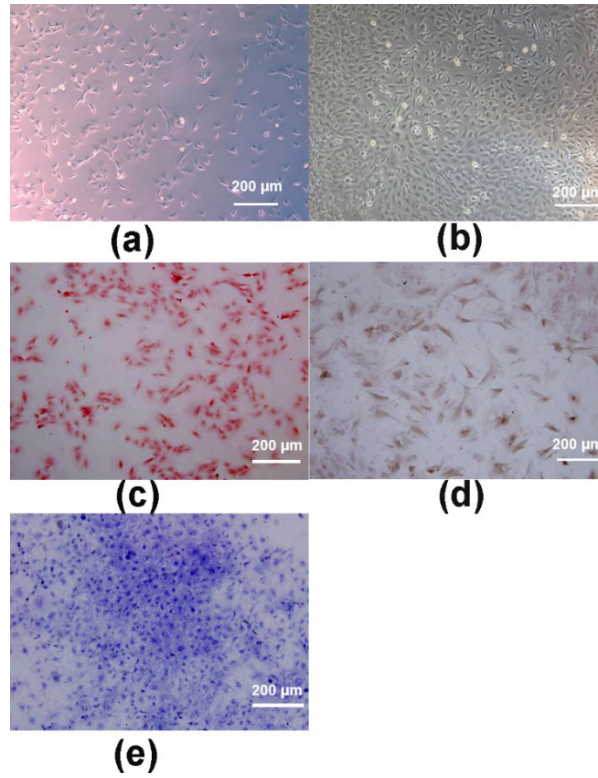


Figure S3 (a) First-generation chondrocytes. (b) Third-generation chondrocytes. (c) Positive chondrocyte slides stained with safranin O. (d) Chondrocyte type collagen II staining was positive. (e) Cartilage cells were positively stained with toluidine blue.