

Fig. S1 LC-MS total ion chromatogram of four samples in both positive and negative ion modes.  
A: Pos positive ion mode. B: Neg negative ion mode; LC-MS: liquid chromatograph-mass spectrometer.

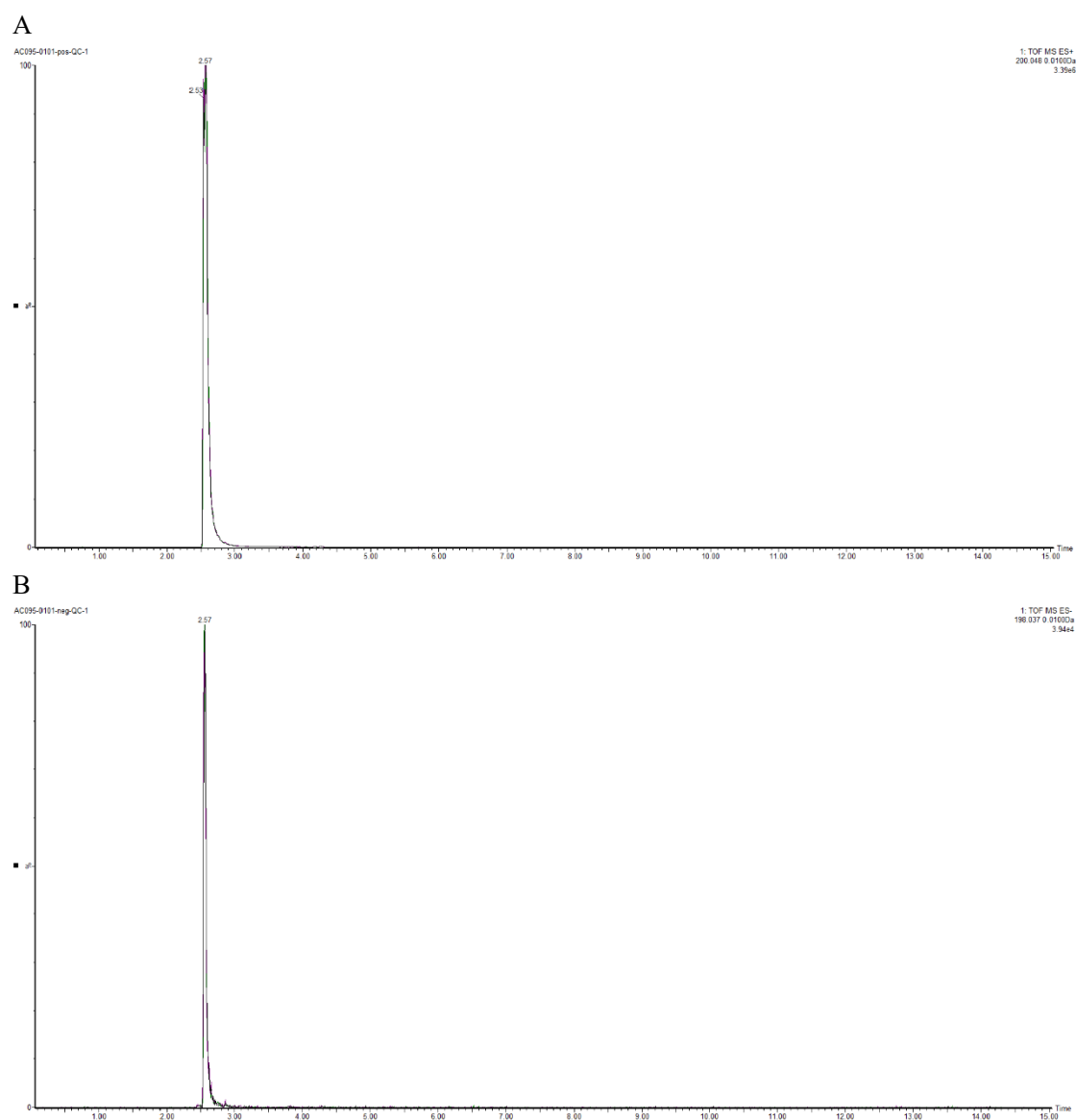
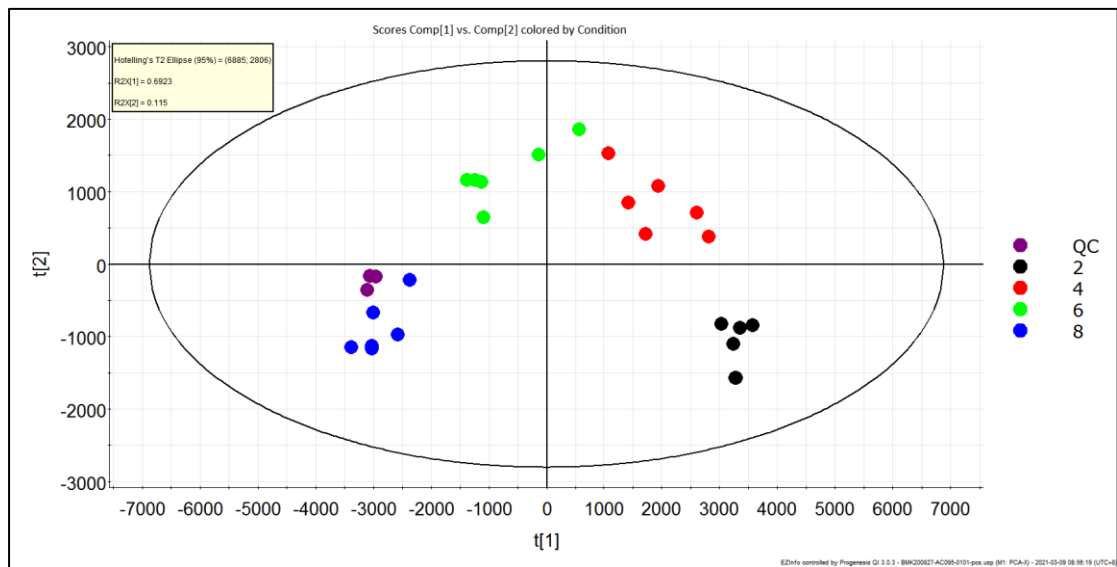


Fig. S2 Positive and negative ion internal standard responses of QC samples at four developmental stages. A: Positive ion internal standard response. B: Negative ion internal standard response; LC-MS: liquid chromatograph-mass spectrometer.

A



B

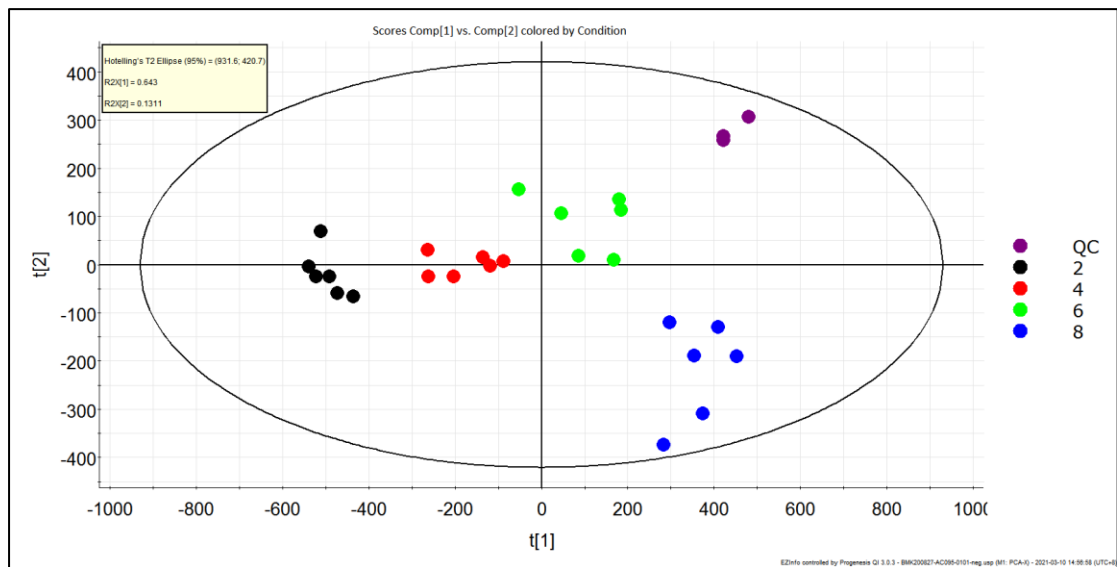


Fig. S3 PCA score plots among four developmental stages for *B. juncea* samples and QC sample in positive and negative ion modes. PCA: principal component analysis; QC: control sample.