

Supplementary file

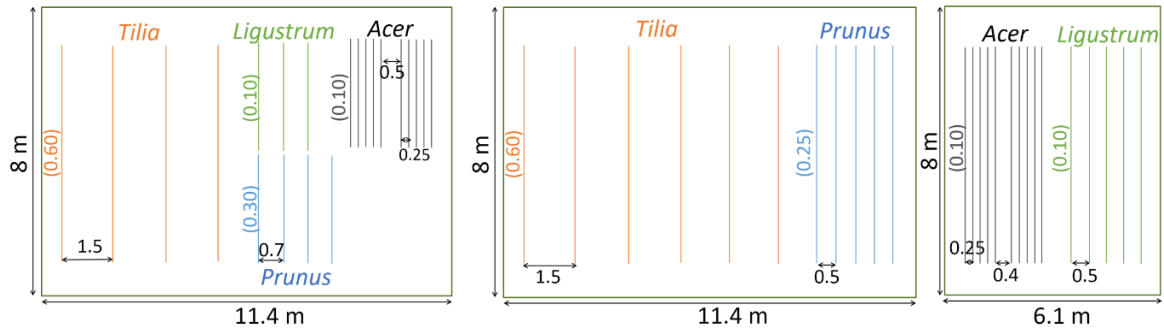


Figure S1. Dimensions of one experimental plot in 2016 (left) and in 2017 and 2018 (right). Between row distances (horizontal) and within row distances (vertical, in brackets) in meter.

Table S1. Corresponding dates for occurring Days of the Year (DOY) on graphs.

Day Of the Year (DOY)	Date
100	April 10
150	May 30
200	July 19
250	September 7
300	October 27

Table S2. Fertilization dates in 2016–2018.

Year	Date	Day Of the Year (DOY)
2016	May 31	152
	July 7	187
	August 8	218
2017	May 2	122
	May 30	150
	June 26	177
	July 27	208
2018	April 13	103
	May 2	122
	May 25	145
	June 15	166

Table S3. Average precipitation (mm) and air temperature (°C) during the three growing seasons at the experimental site and 30-year average data from RMI Belgium, Ukkel (1981–2010).

	Precipitation (mm)				Air temperature (°C)			
	P ₂₀₁₆	P ₂₀₁₇	P ₂₀₁₈	P30-yr avg.	T ₂₀₁₆	T ₂₀₁₇	T ₂₀₁₈	T30-yr avg.
March	83.4	43	93.4	70	5.5	9.1	5.0	6.8
April	58.4	18.4	52.6	51.3	8.8	8.8	12.5	9.8
May	115.6	24.2	28.8	66.5	14.4	15.6	16.2	13.6
June	98	22.4	25.2	71.8	16.8	19.5	18.0	16.2
July	27	68.4	3.8	73.5	19.4	18.8	21.8	18.4
August	44.2	71	69.8	79.3	18.9	18.1	19.0	18

September	16	71.6	43.8	68.9	17.6	14	14.8	14.9
October	53.4	41	30.8	74.5	10.1	13.4	12.2	11.1

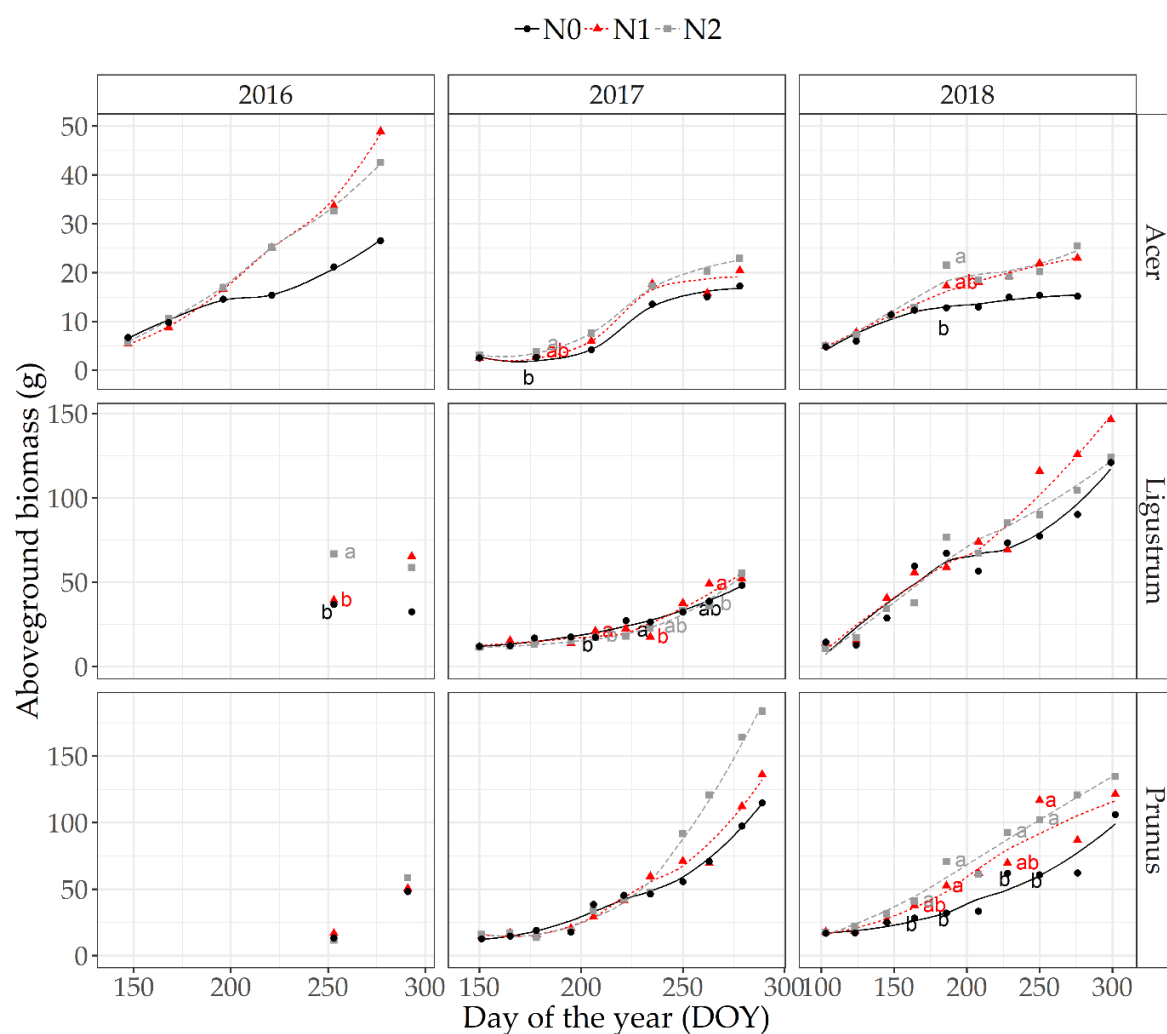


Figure S2. Biomass accumulation for *Acer*, *Ligustrum* and *Prunus* at each experimental year (2016–2018). N0: Deficiency treatment, N1: Standard treatment, N2: High N rate treatment. Each point is the mean of three replicates. Means labelled by different letters did significantly differ at $P \leq 0.05$. If no letters are present, no significant differences were present at that time point. In 2016, entire plants of *Ligustrum* and *Prunus* were only sampled twice. *Tilia* was not sampled regularly over the years.

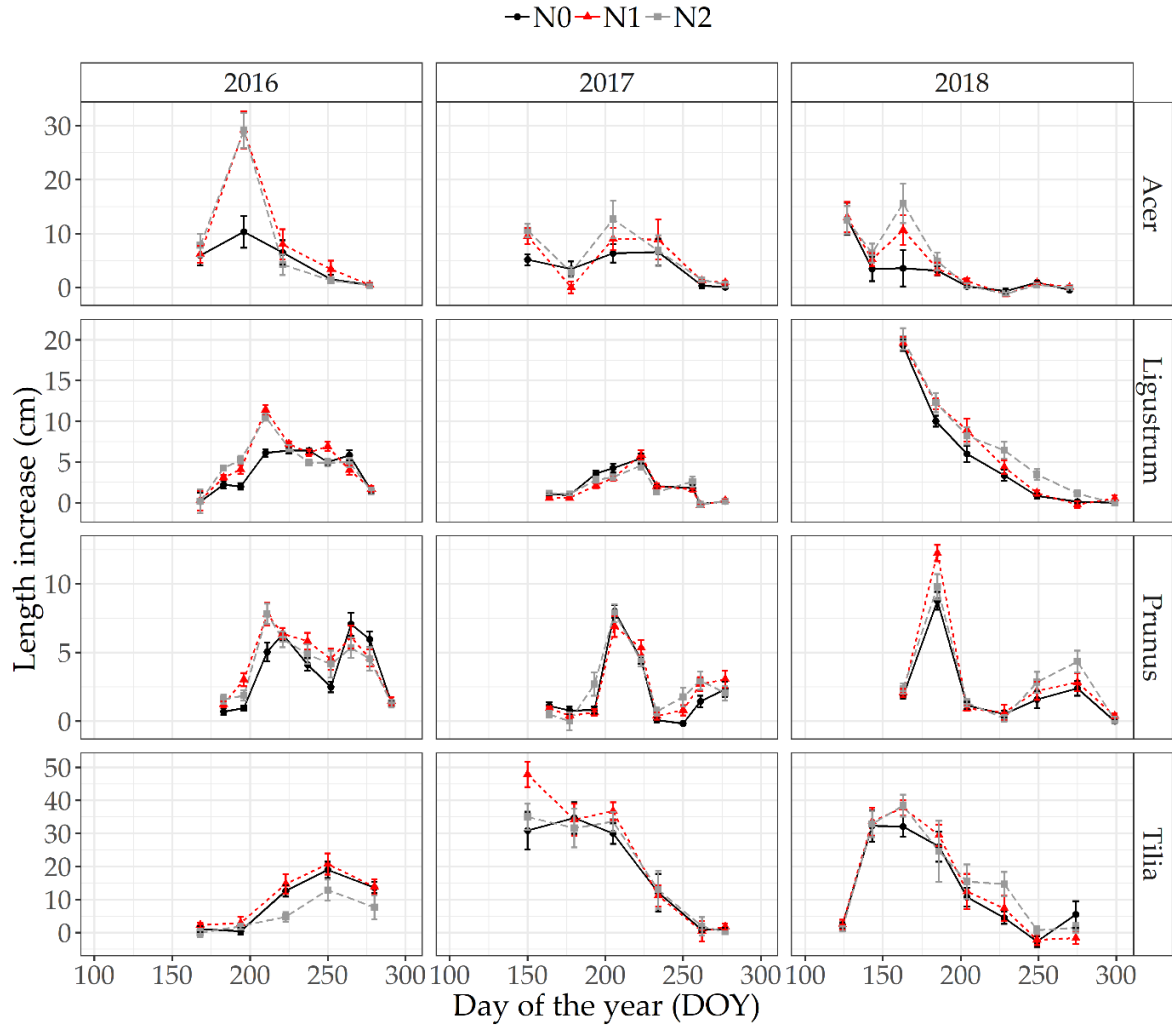


Figure S3. Length increase for *Acer*, *Ligustrum*, *Prunus* and *Tilia* at each experimental year (2016–2018). N0: deficiency treatment, N1: Standard treatment, N2: High N rate treatment. Every time point represents the difference in length between that and the previous measuring moment. Each point is the mean of three replicates. Error bars indicate standard errors.

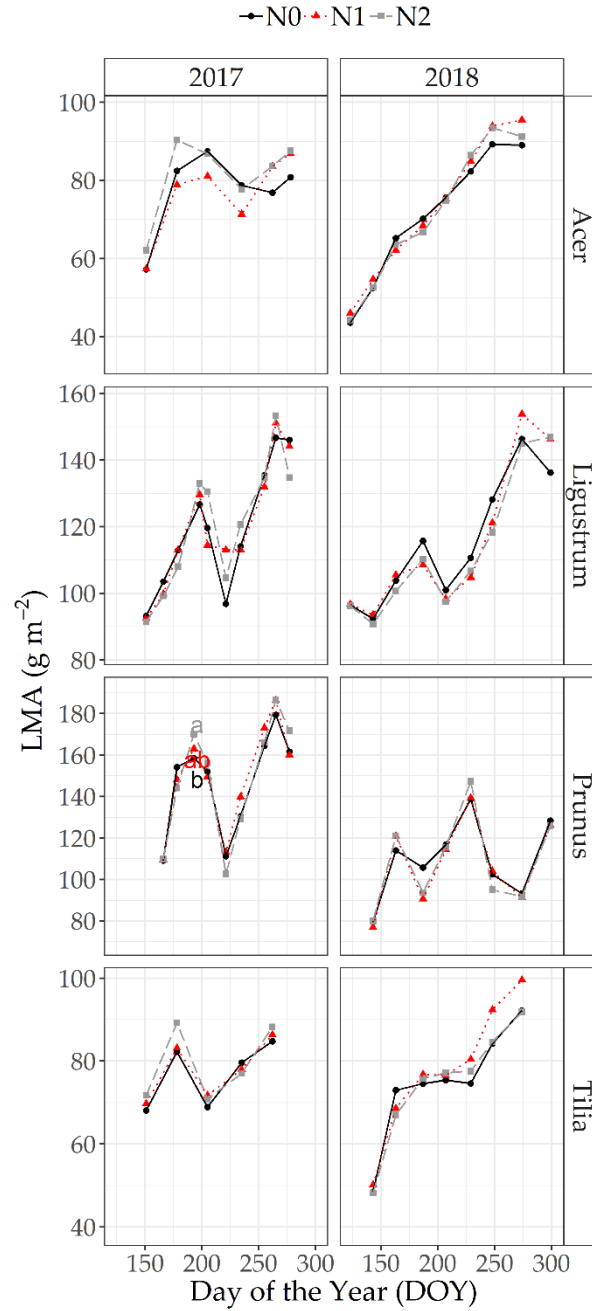


Figure S4. Changes in LMA of young leaves of *Acer*, *Ligustrum*, *Prunus* and *Tilia* in 2017–2018. N0: Deficiency treatment, N1: Standard treatment, N2: High N rate treatment. Each point is the mean of three replicates of 10 (2017) or 15 (2018) pooled leaves. Means labelled by the same letter did not significantly differ at $P \leq 0.05$. If no letters are present, no significant differences were present.