

SUPPLEMENTARY MATERIALS

To Figure 1A

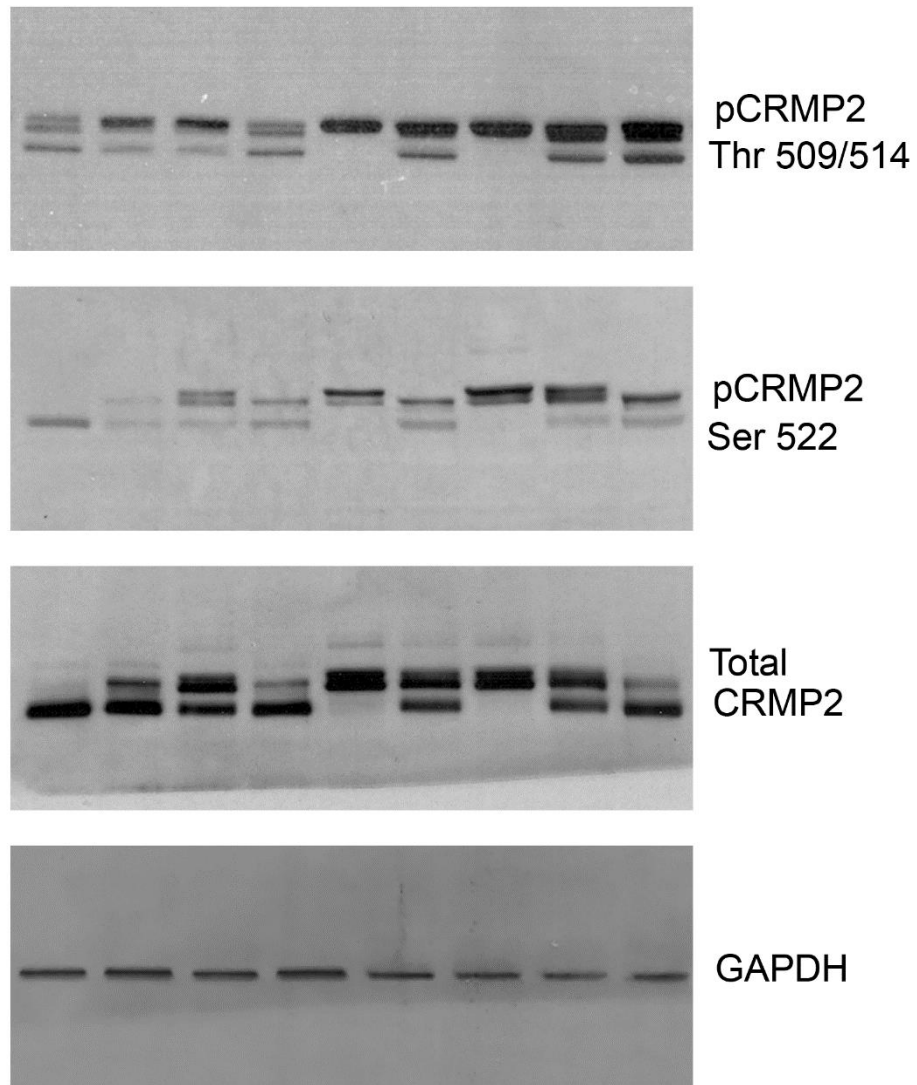


Figure S1. The unedited images of immunoblots for Figure 1A.

To Figure 2G

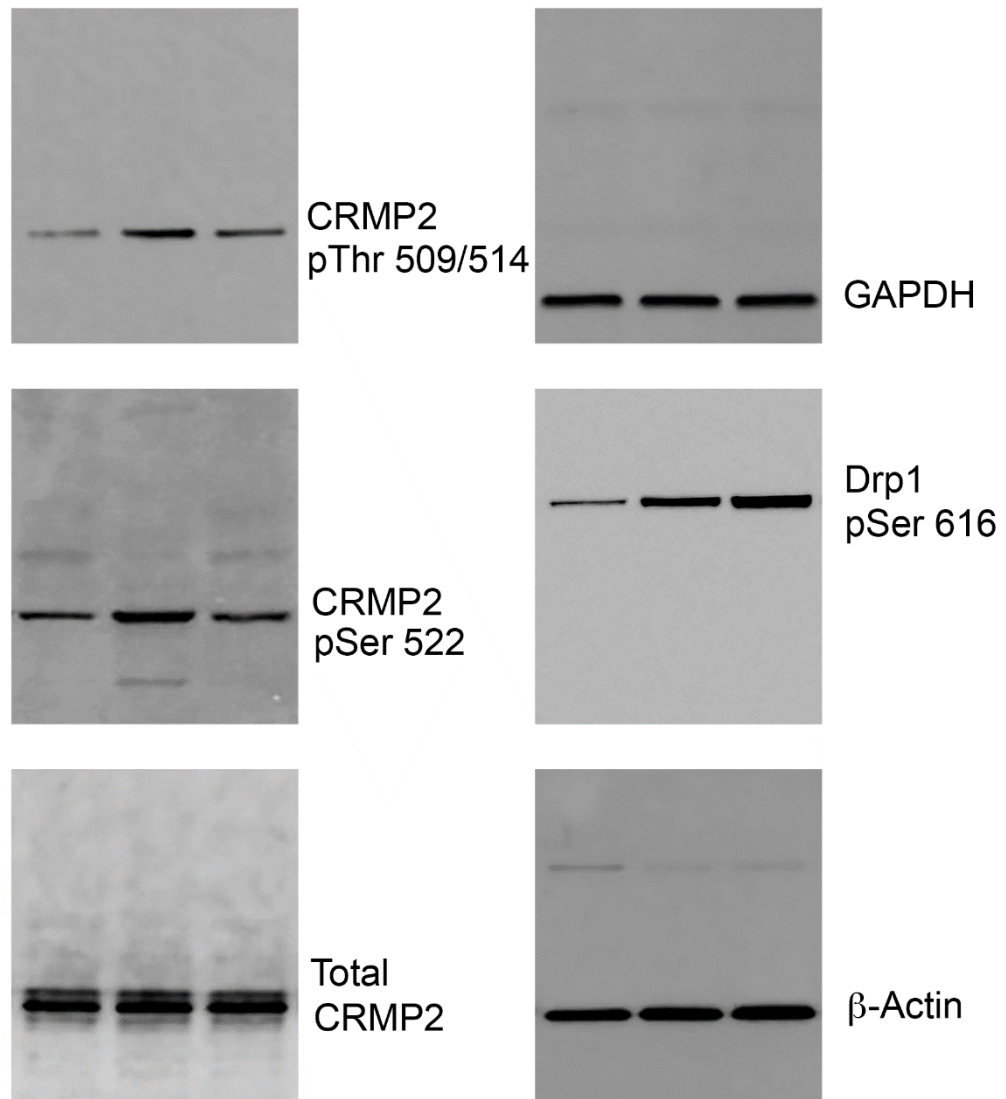


Figure S2. The unedited images of immunoblots for Figure 2G.

To Figure 3A and B

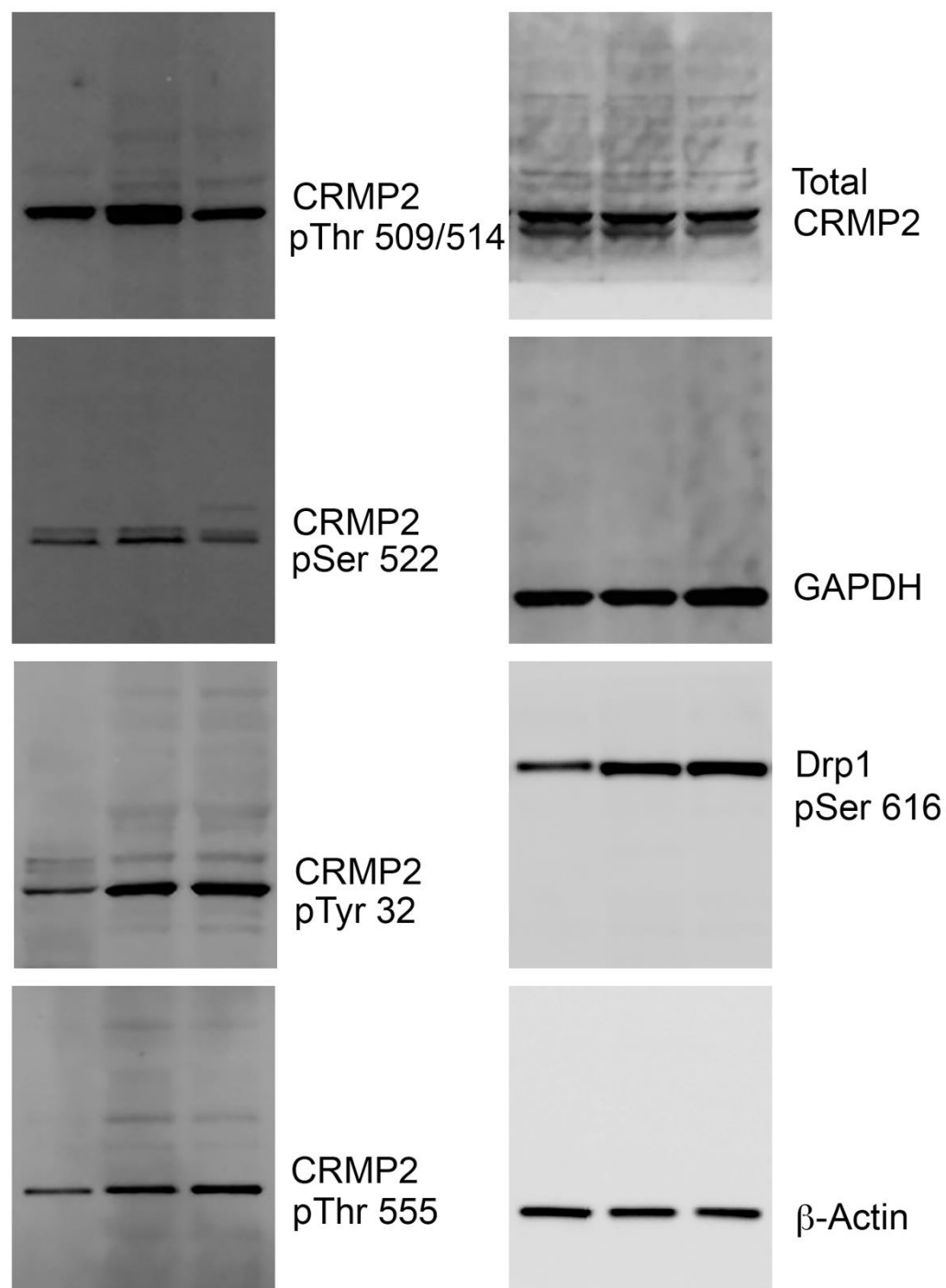
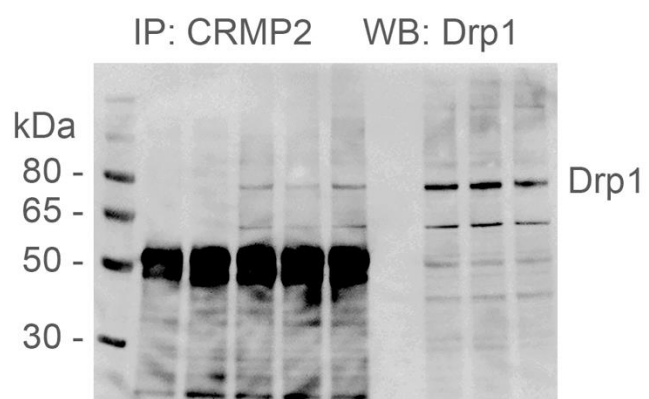


Figure S3. The unedited images of immunoblots for Figure 3A and B.

To Figure 4A.



To Figure 4B.

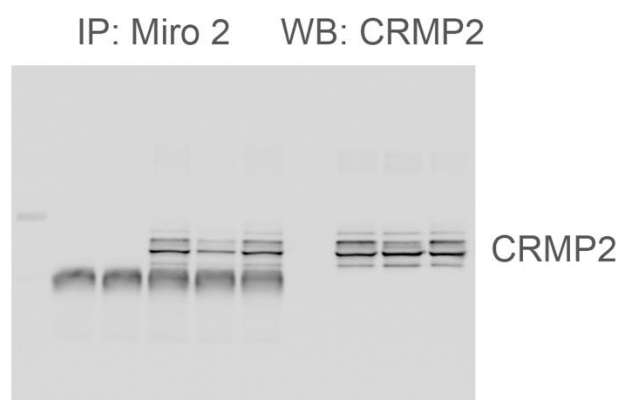
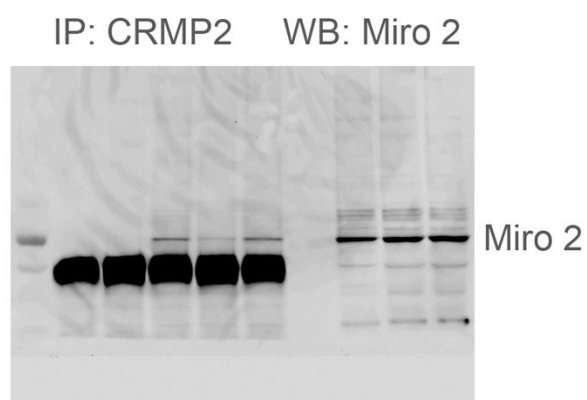
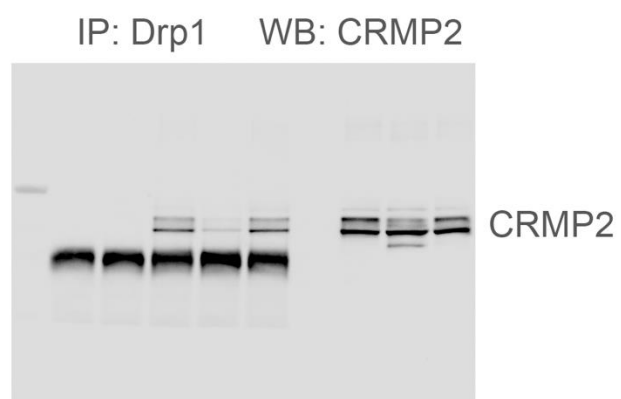


Figure S4. The unedited images of immunoblots for Figure 4A and B.

Supplemental Table S1.

**Main characteristics of human postmortem brain samples**

<u>Sample ID#</u>	<u>Assigned #</u>	<u>Age</u>	<u>Postmortem Interval (hrs)</u>	<u>Race</u>	<u>Sex</u>	<u>CAG, number</u>	<u>Grade</u>
Control							
5028	1	67	18	W	M	n/d	-
4324	2	62	18	B	F	n/d	-
5404	3	50	17	W	M	n/d	-
5080	4	61	14	B	F	n/d	-
HD Patients							
5199	1	67	13	W	M	44/19	2
5217	2	55	10	W	M	49/21	2
5413	3	43	10	W	M	51/19	2
5104	4	61	16	W	F	47/15	1
4514	5	69	10	W	F	46/17	2-3

n/d – not determined