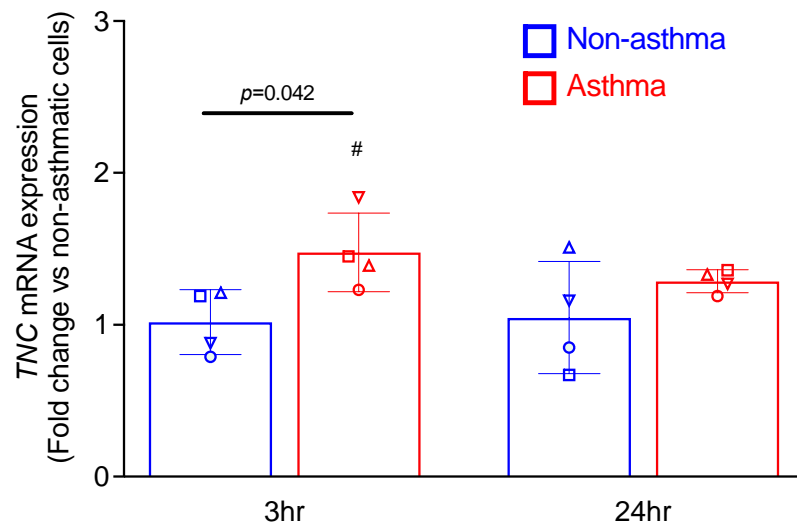
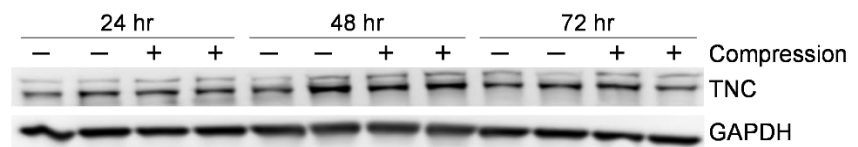


**Table S1.** Donor information for primary HBE cells.

Donor	Sex	Age	Ethnicity	BMI	Used in Figure
N1	F	16	Caucasian	19.35	1
N2	F	23	Caucasian	26.18	1
N3	F	59	Hispanic	27.9	1,2,3
N4	F	47	Caucasian	25.1	1,2
N5	M	70	Caucasian	N/A	1, 2,3
N6	M	35	Caucasian	31.42	1,2,3,4
N7	F	39	Hispanic	25.59	2
N8	M	50	Caucasian	27.3	2
A1	F	38	Caucasian	30.9	1
A2	F	28	Caucasian	N/A	1
A3	M	20	Black	N/A	1
A4	F	59	Caucasian	28.5	1



**Figure S1.** At baseline, TNC mRNA expression is marginally higher in asthmatic HBE cells at 3 h. Baseline TNC mRNA expression was measured at 3 h and 24 h in non-asthmatic (mean  $\pm$  SEM, 4 donors) and asthmatic cells (mean  $\pm$  SEM, 4 donors). #  $p < 0.05$  significantly different between non-asthma and asthma, analyzed by two-way ANOVA with Bonferroni's post-hoc test.



**Figure S2.** Compression does not increase the cellular expression of TNC. Representative Western blot of three independent experiments showed no change in cellular TNC by mechanical compression. GAPDH was used as a loading control.