

Figure S1: The effect of D-gal on cell proliferation in SYF-GCs of D280 hens. EdU labeled-proliferative GCs from control and D-gal-treated groups with different concentrations (0, 25, 50, 100, 200 mM). Scale bar: 50 μ m. *** $P < 0.001$, which represents the difference between the groups in which the GCs were treated with D-gal of different concentrations for 24 h compared to control.

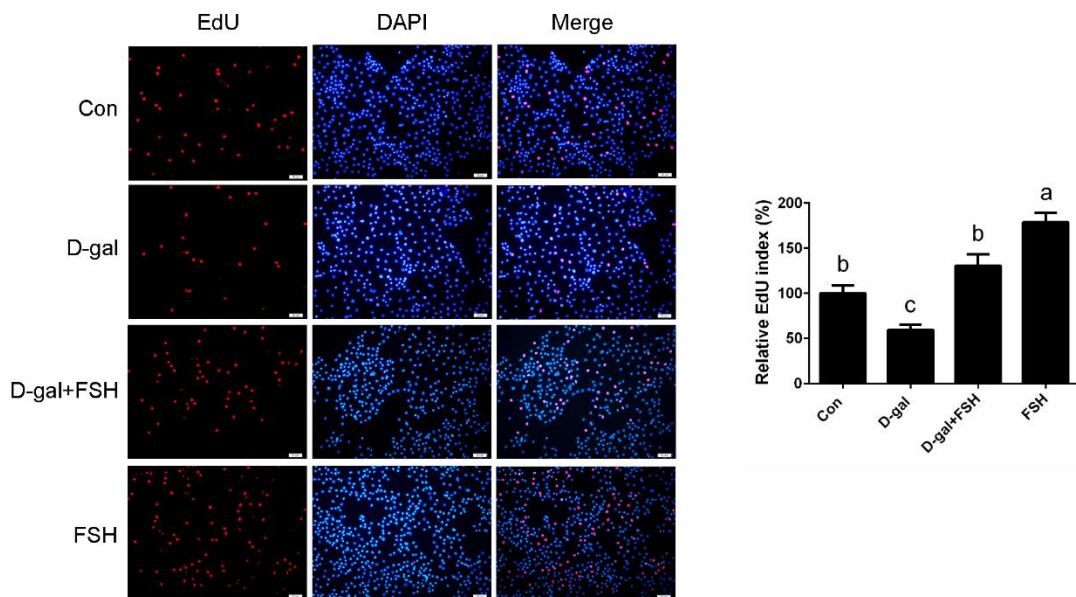


Figure S2: The effect of FSH on cell proliferation in D-gal-induced senescent GCs. SYF-GCs

of D280 hens were cultured with D-gal (200 mM) for 24 h, and then incubated with FSH (0.01 IU/mL) for another 24 h. EdU assay in GCs from the control GCs, senescent GCs (treated with 200 mM D-gal for 24 h), senescent GCs (treated with 200 mM D-gal for 24 h) with FSH treatment (0.01 IU/mL for another 24 h), and FSH treatment alone GCs (0.01 IU/mL). Scale bar: 50 μ m. Different lowercase indicated significant differences ($P < 0.05$).