

Supplementary figures

A

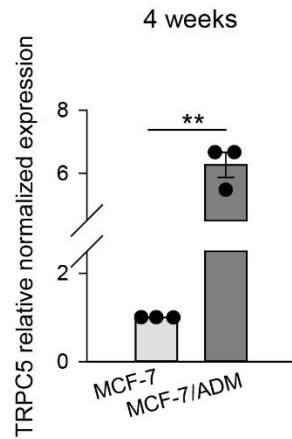


Figure S1. qRT-PCR analysis showed that TRPC5 expression was greater in MCF-7/ADM compared to MCF-7 cells. $**P < 0.01$.

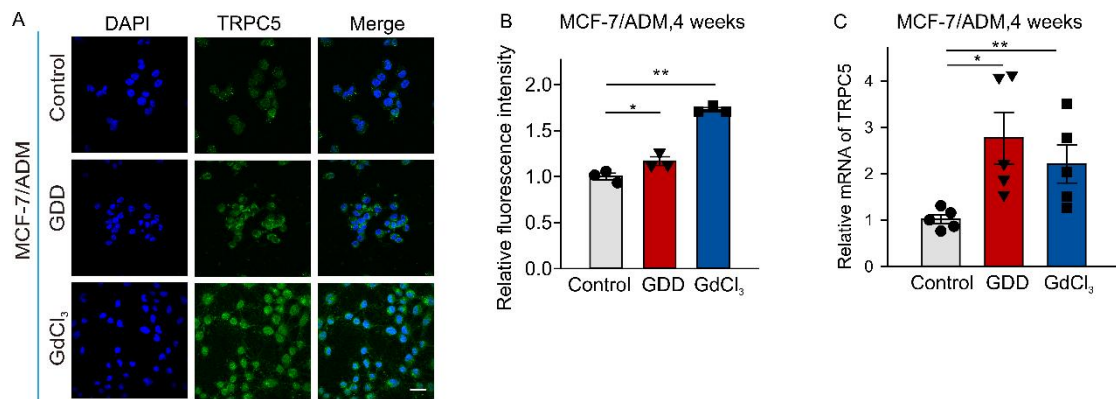


Figure S2. TRPC5 expression was greater in MCF-7/ADM treated with GDD and GdCl₃ for 4 weeks. **A and B** Representative images of immunostaining with TRPC5 and summary data (n=4) in MCF-7/ADM cells (TRPC5, green fluorescence). **C** qRT-PCR analysis of TRPC5 expression in MCF-7/ADM cells (n=5). The One-way ANOVA test followed by the Student-Newman-Keuls post hoc all pair-wise multiple comparison test was used to compare the treatment groups with the control group. All values are mean \pm SEMs. $*P < 0.05$, $**P < 0.01$. The scale bar indicates 30 μ m.

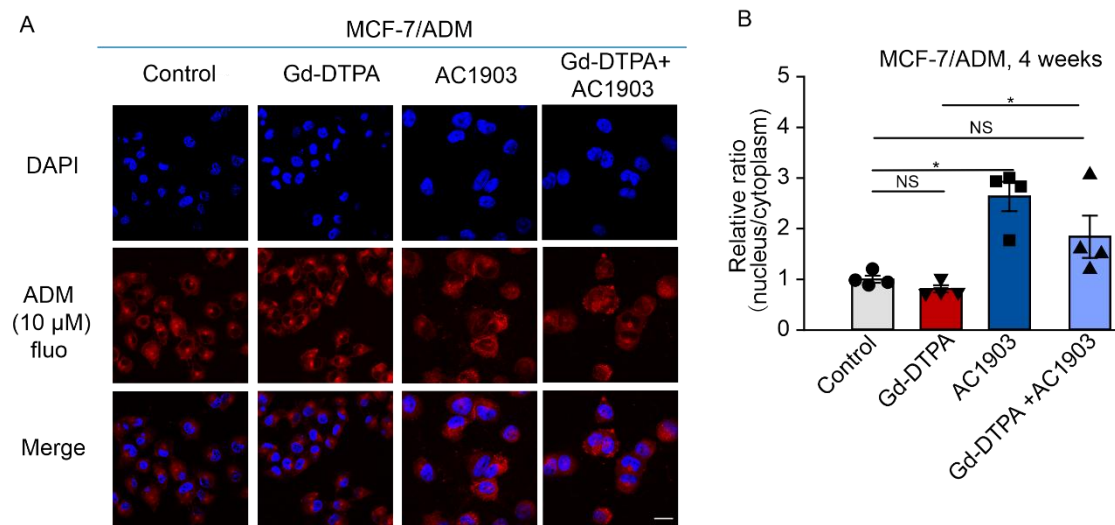


Figure S3. Downregulation of TRPC5 expression resulted in a decreased efflux of ADM in MCF-7/ADM cells. **A** Nuclear ADM accumulation in MCF-7/ADM cells. Representative confocal micrographs of MCF-7/ADM cells are shown. ADM exhibits red autofluorescence. The scale bar indicates 30 μ m. **B** Summary data of ADM accumulation in MCF-7/ADM cells (n=4). The One-way ANOVA test followed by the Student-Newman-Keuls post hoc all pair-wise multiple comparison test was used to compare the treatment groups with the control group. All values are mean \pm SEMs. * P < 0.05, ** P < 0.01. “NS” stands for no significant difference.