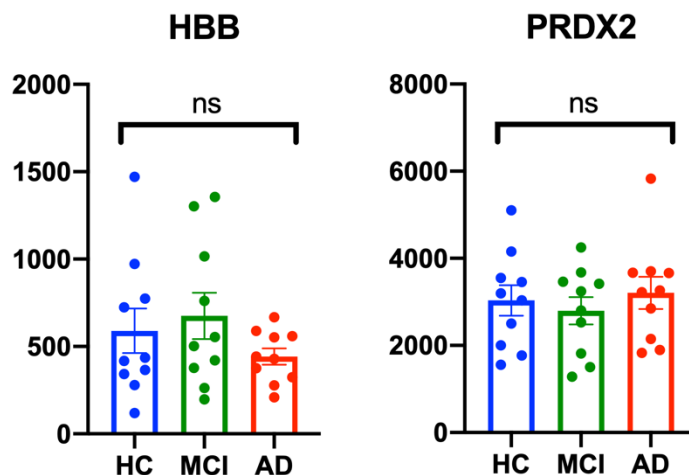
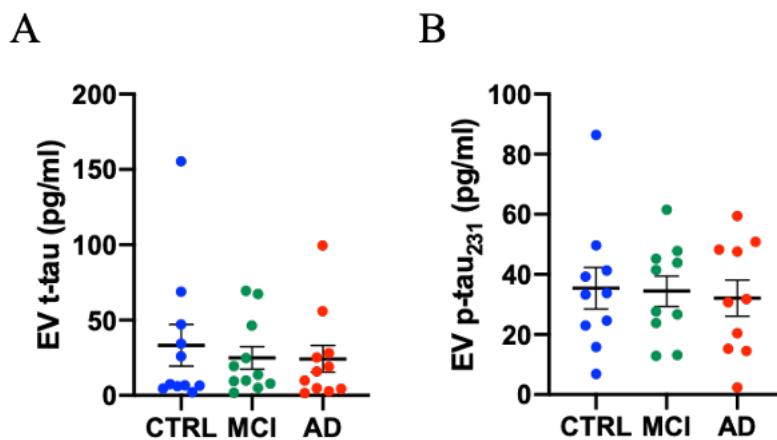


Supplementary Figure S1. The canonical pathway of identified proteins by TMT-labeling quantitative proteomics in IPA.



Supplementary Figure S2. Quantitative analysis of HBB and PRDX2. ns: no significance as determined by one-way ANOVA. Outlier identifier with “Robust nonlinear regression and Outlier removal method” (ROUT, Q = 1%) detected no outlier among tested samples (Prism 8, GraphPad).



Supplementary Figure S3. Comparison of total tau and tau phosphorylated at threonine 231 in EVs among AD, MCI and CTRL: **A)** total tau; there is no significantly different. **B)** p-tau₂₃₁; there is no significant difference among groups (A, B).