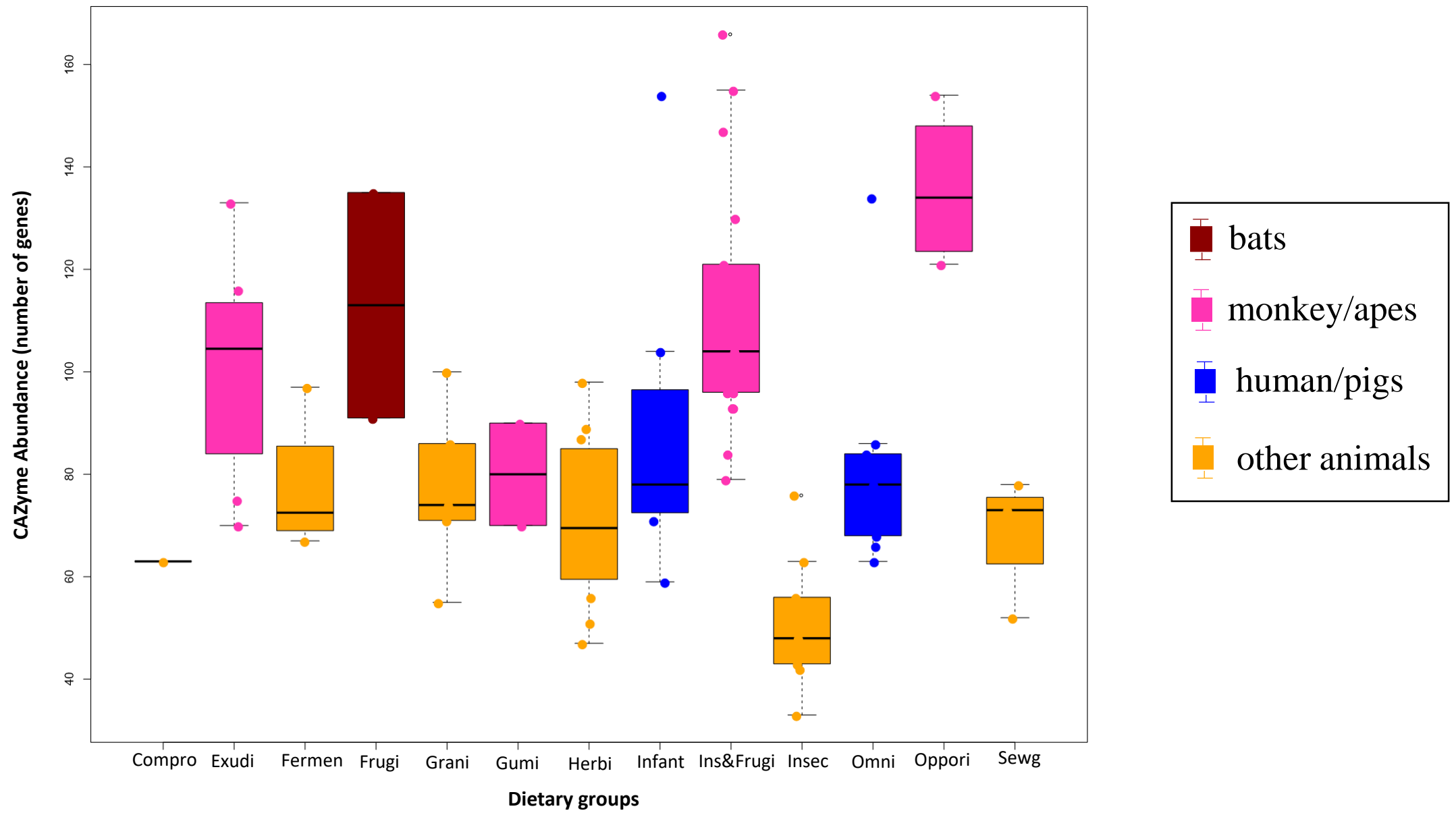


a



b

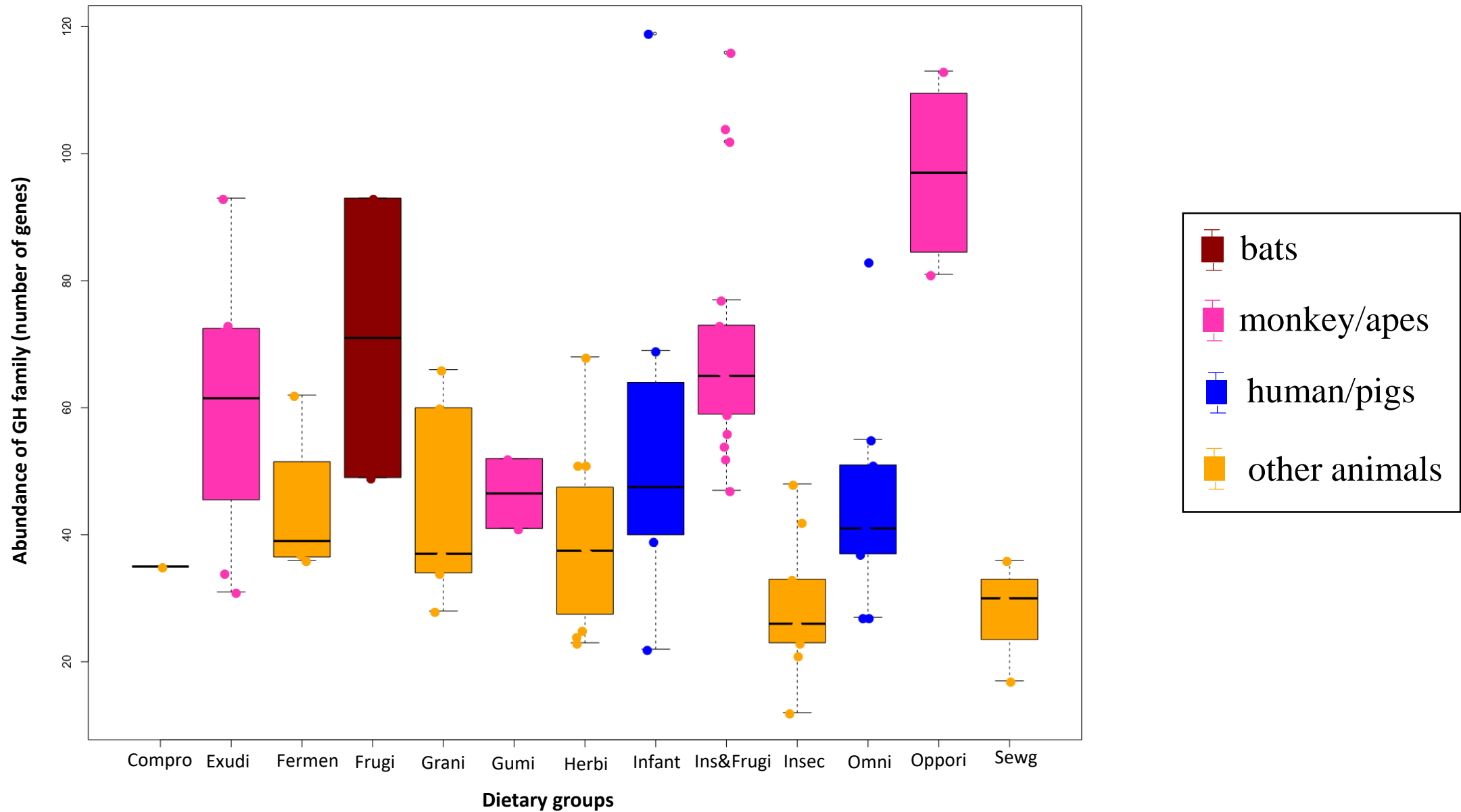


Figure S2. CAZyme families and GHs genes encoded by the strains in each dietary group **(a)** Abundances of the CAZyme families. **(b)** Abundance of genes encoding GHs. Compro: Commercial probiotic; Exudi: Exudativore; Fermen: Fermented food; Frugi: Frugivore; Grani: Granivore; Gumi: Gummivore; Herbi: Herbivore; Infant: Infant food; Ins&Frugi: Frugivore eating insects; Insec: Nectarivore, palynivore; Omni: Omnivore; Oppori: Opportunistic omnivore eating fruits, leaves and insects; Sewg: Sewage.