

Transcriptomic profiling reveals an enhancer RNA signature for recurrence prediction in colorectal cancer

Divya Sahu^{1,2}, Chen-Ching Lin³, Ajay Goel^{1,*}

¹Department of Molecular Diagnostics and Experimental Therapeutics, Beckman Research Institute of City of Hope Comprehensive Center, 1218 S. Fifth Avenue, Biomedical Research Center, Monrovia, California 91016, USA

²Department of Genetics, University of Alabama at Birmingham, Birmingham, AL, 35294, USA

³Institute of Biomedical Informatics, National Yang Ming Chiao Tung University, Taipei, 11221, Taiwan

***Correspondence:** ajgoel@coh.org; Tel.: +1-626-218-3452

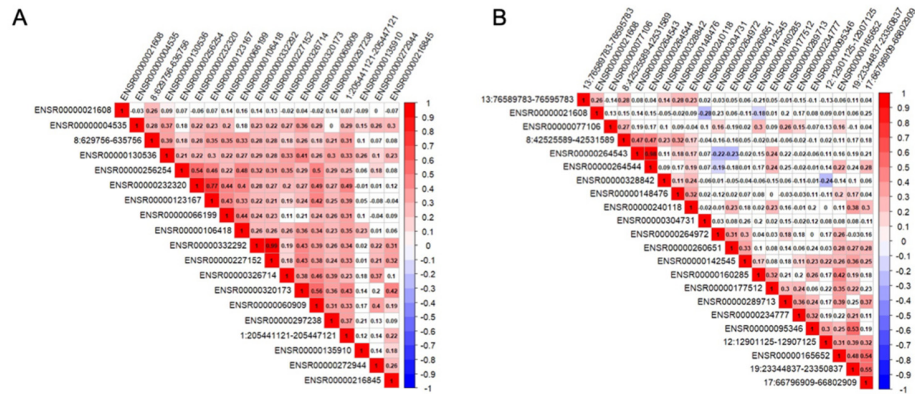


Figure S3: Spearman correlation analysis of the enhancer RNA signature (eRNA). Corrplot of eRNA expression levels measured by RNA-seq in **(A)** colon cancer; 22 eRNAs **(B)** rectal cancer; 19 eRNAs. The scale bar denotes correlation strength, with 1 indicating positive correlation (red) and -1 indicating negative correlation (blue). Only eRNA *ENSR00000021608* was observed in common between colon cancer and rectal cancer.