

Supplementary Materials: Chemical Characterization of Electronic Cigarettes (e-cigs) Refill Liquids Prior to EU Tobacco Product Directive (TPD) Adoption: Evaluation of BTEX Contamination by HS-SPME-GC-MS and Identification of Flavoring Additives by GC-MS-O

Jolanda Palmisani, Carmelo Abenavoli, Marco Famele, Alessia Di Gilio, Laura Palmieri, Gianluigi de Gennaro and Rosa Draisci

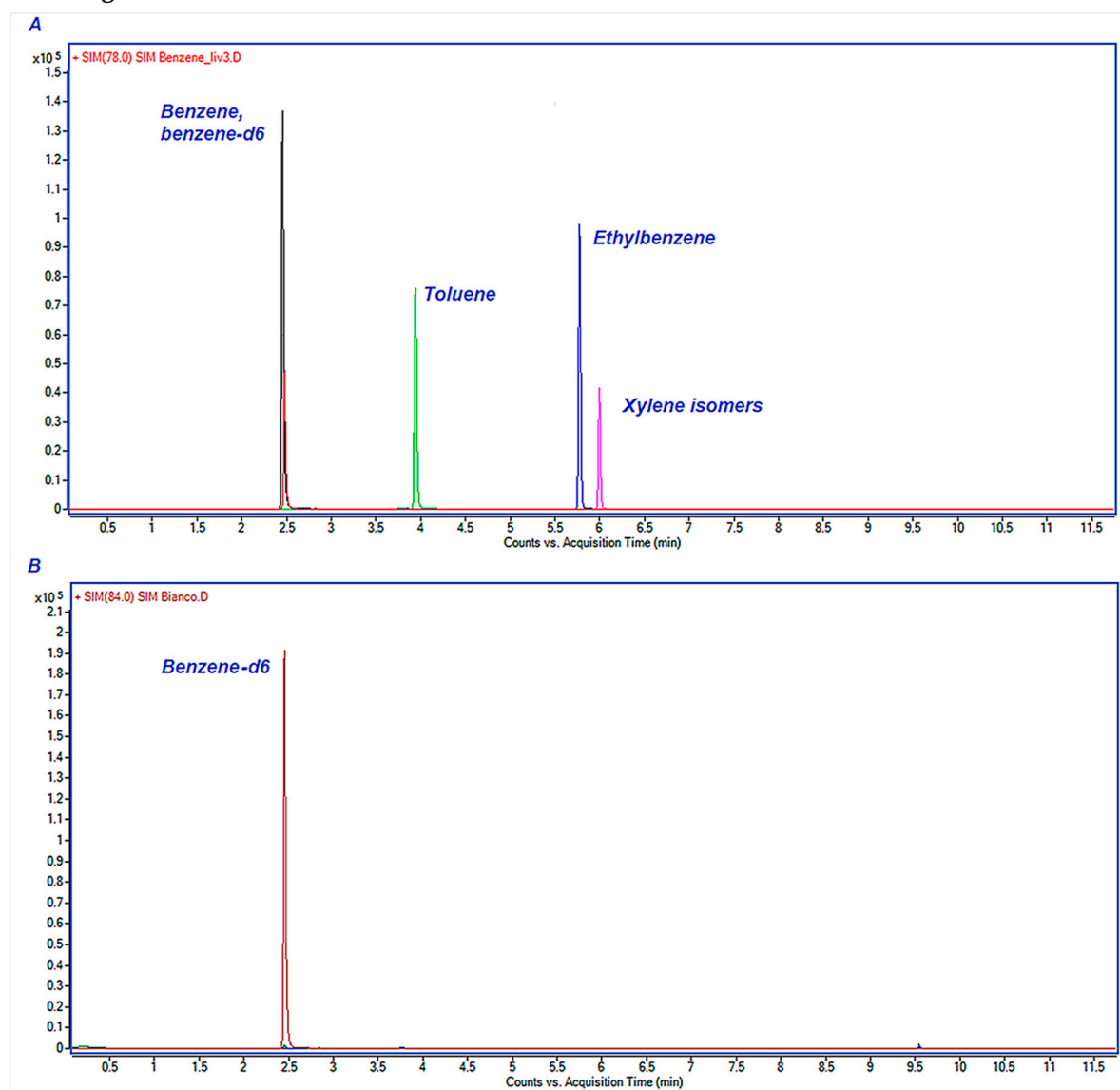


Figure S1. Comparison of the Chromatograms of a blank sample and a sample spiked with the BTEX standard solution (calibration level 3).