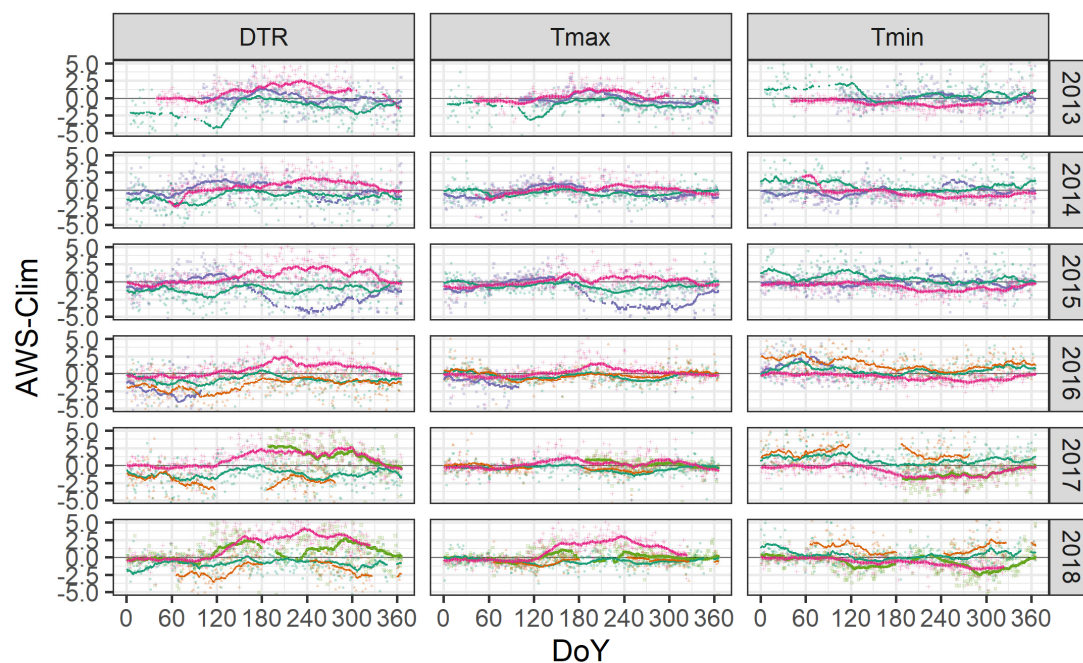
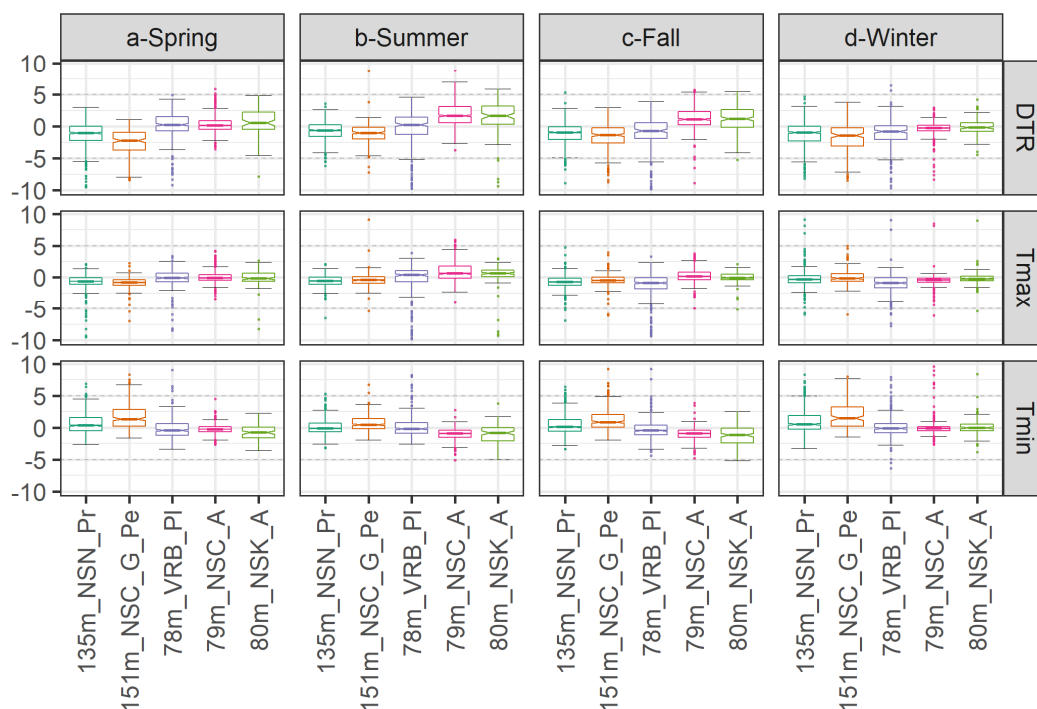


## Supplementary Material S2

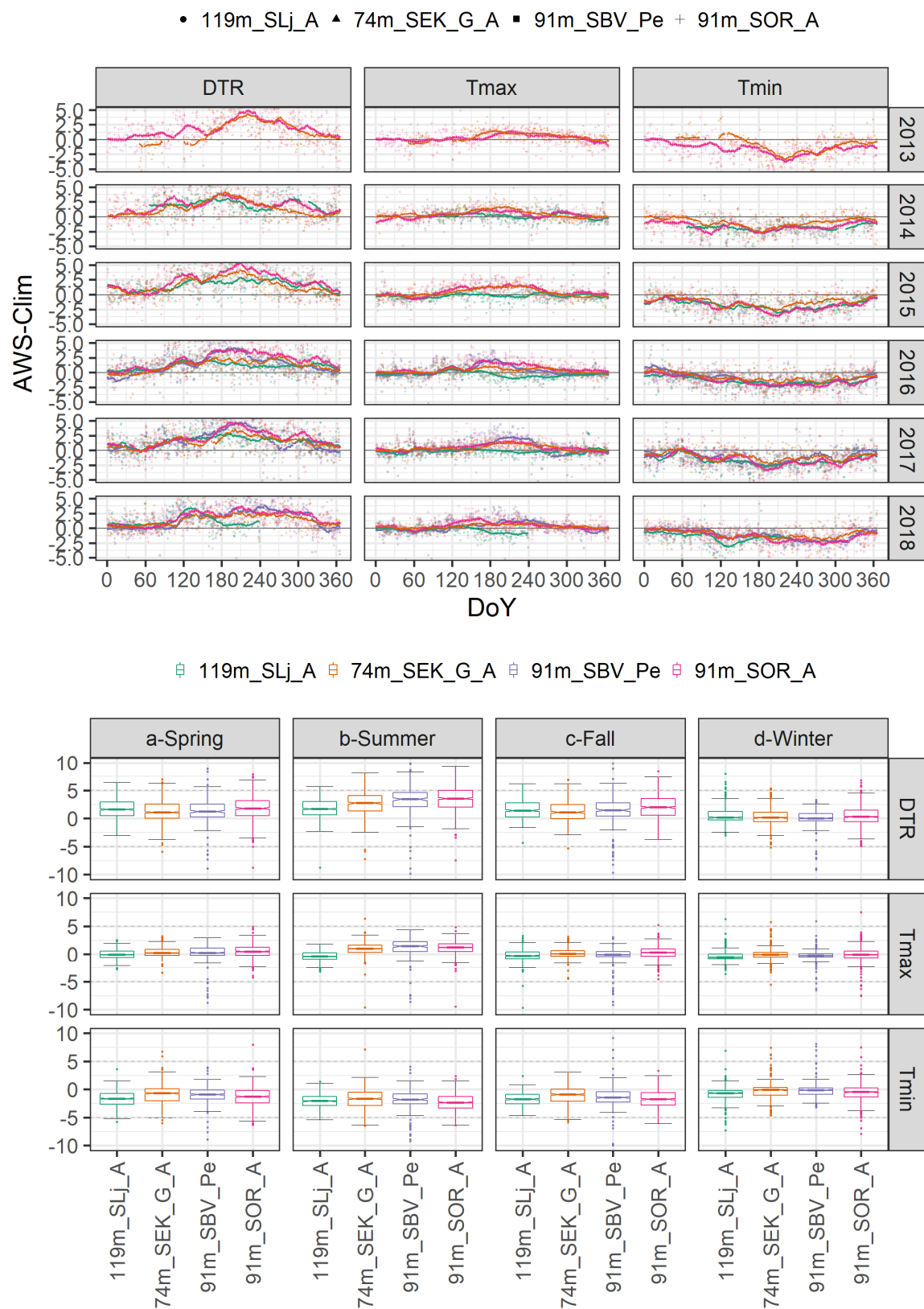
• 135m\_NSN\_Pr ▲ 151m\_NSC\_G\_Pe ■ 78m\_VRB\_Pl + 79m\_NSC\_A ▣ 80m\_NSK\_A



▣ 135m\_NSN\_Pr ▤ 151m\_NSC\_G\_Pe ▥ 78m\_VRB\_Pl ▦ 79m\_NSC\_A ▧ 80m\_NSK\_A

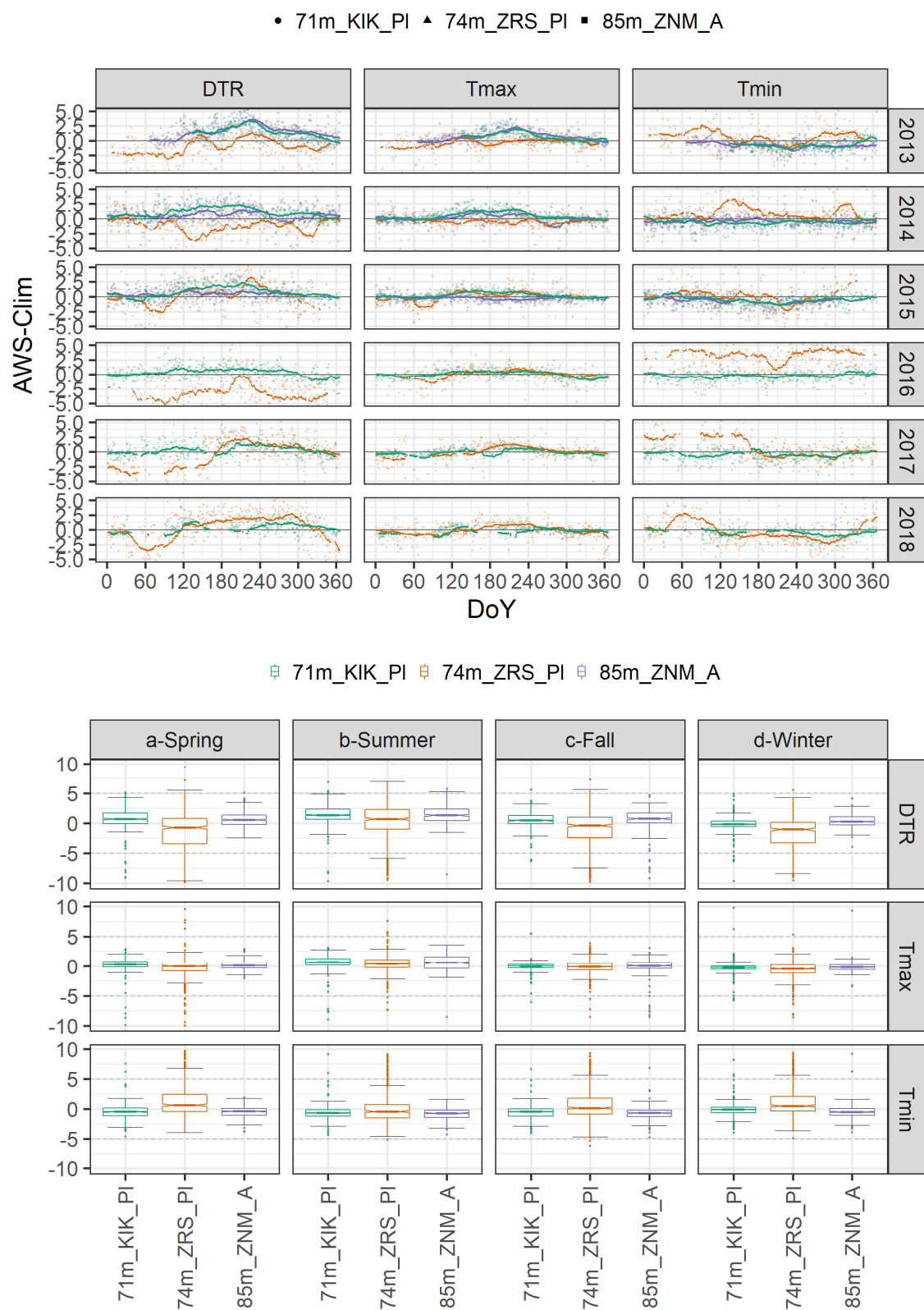


**Figure S2.1 R1:** Annual and seasonal variation of  $T_{\max}$ ,  $T_{\min}$  and DTR difference in respect to Novi Sad reference climatological station for 2013–2018 period

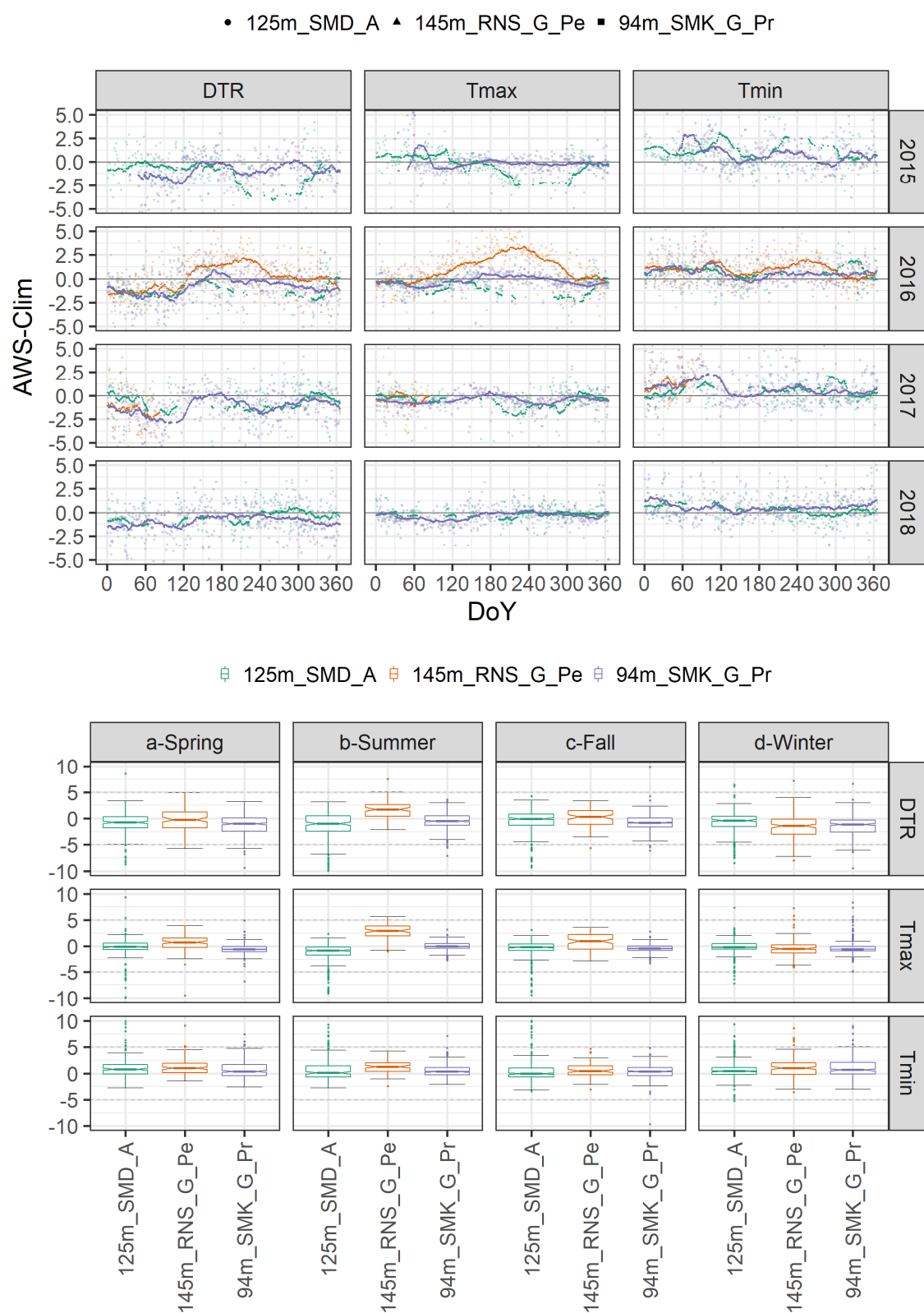


**Figure S2.2 R2:** Annual and seasonal variation of  $T_{max}$ ,  $T_{min}$  and DTR difference in respect to Subotica (Palic) reference climatological station for 2013–2018 period





**Figure S2.4 R4:** Annual and seasonal variation of  $T_{max}$ ,  $T_{min}$  and DTR difference in respect to Kikinda reference climatological station for 2013–2018 period



**Figure S2.5 R5:** Annual and seasonal variation of  $T_{\max}$ ,  $T_{\min}$  and DTR difference in respect to Sr. Mitrovica reference climatological station for 2015–2018 period