

Figure S1 Temporal variations of mass concentrations of aerosols and main chemical components in PM_{2.5}

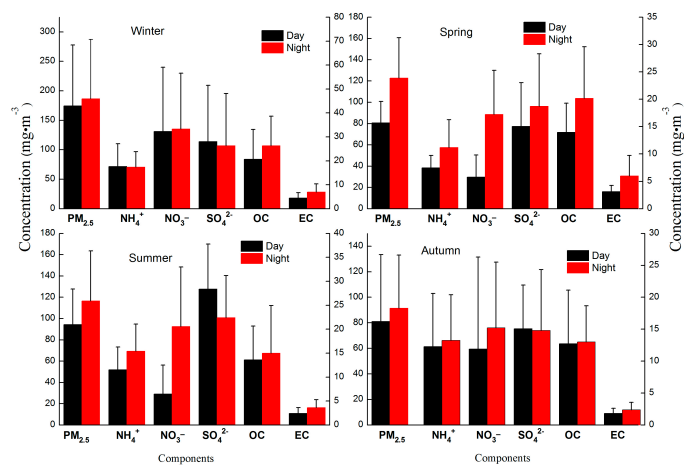


Figure S2 Day-night variations of PM_{2.5} and main chemical components in four seasons

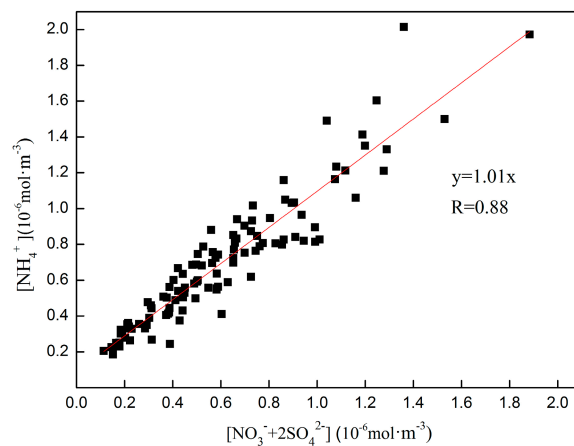


Figure S3 Correlation analysis of molar concentrations of SO₄²⁻, NO₃⁻ and NH₄⁺

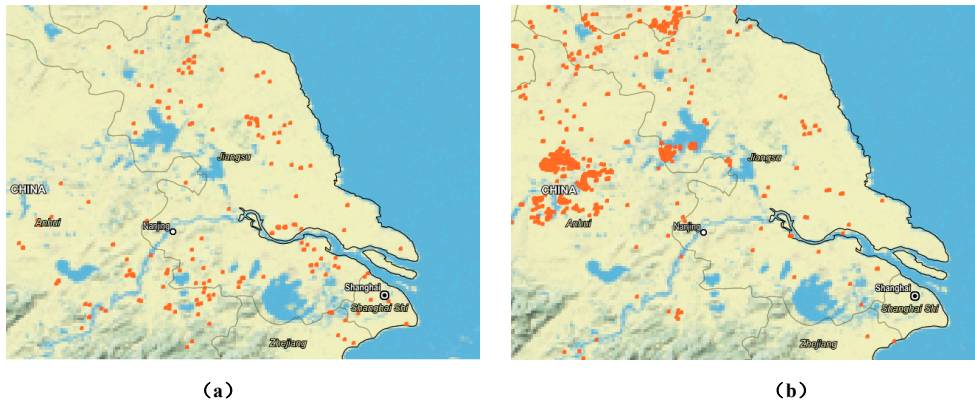


Figure S4 Satellite images of fire points during typical biomass burning episodes

(a) 5.28-5.31 (b) 6.6-6.8

(<https://firms.modaps.eosdis.nasa.gov/firemap/>)

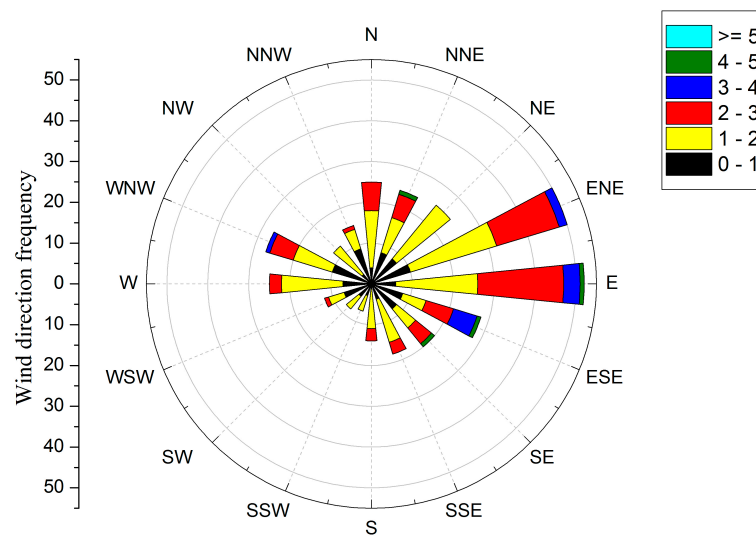


Figure S5 Wind rose map from January to November 2014 in suburban Nanjing