

Supplementary Materials: Seasonal Development of Phytoplankton in South Bohemian Fishponds (Czechia)

Anna Ivanova, Jaroslav Vrba, Jan Potužák, Ján Regenda, and Otakar Strunecký

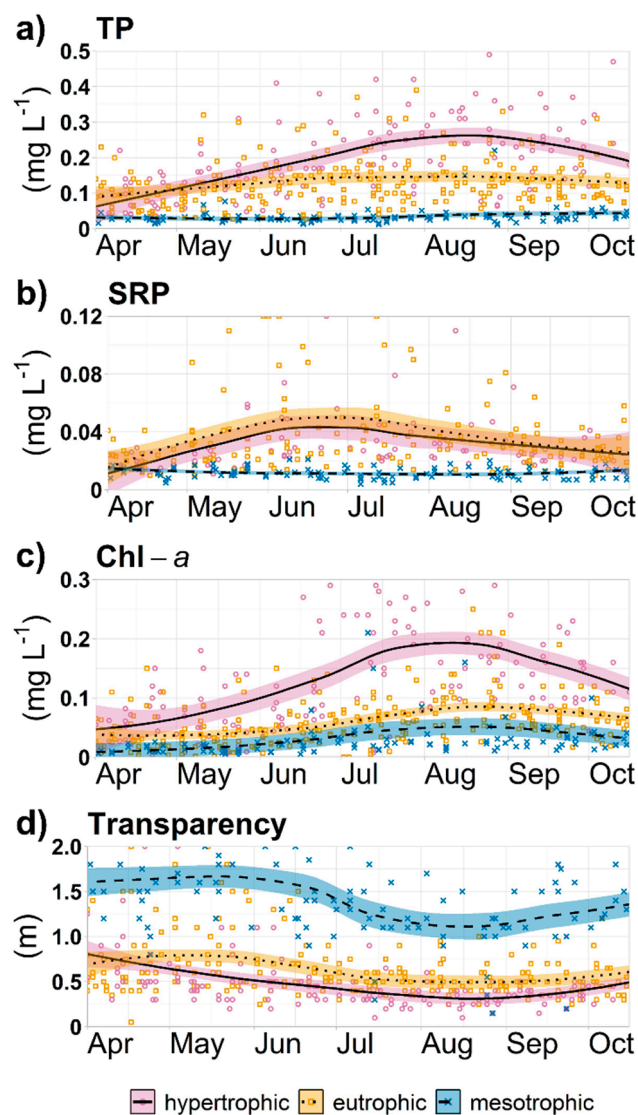


Figure S1. Concentration of a) TP, b) SRP, c) Chl-*a*, and d) transparency during the studied period in hypertrophic, eutrophic, and mesotrophic ponds. The black line is based on the locally weighted smoothing (LOESS) function. The coloured area represents the 95% confidence interval. Each symbol represents an individual measurement.

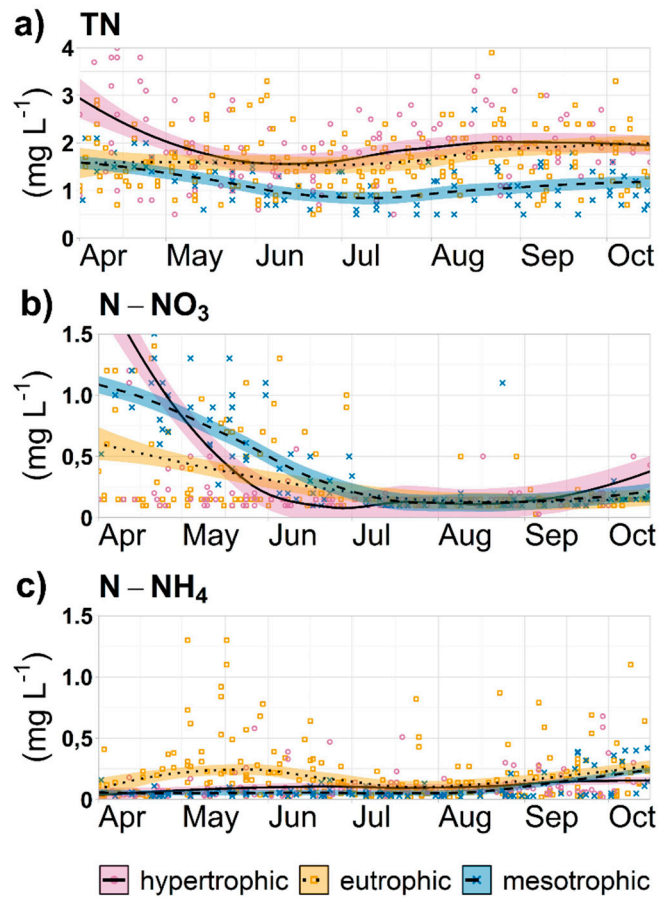


Figure S2. Concentration of a) TN, b) $\text{NO}_3\text{-N}$, and c) $\text{NH}_4\text{-N}$ throughout the monitored period in hypertrophic, eutrophic, and mesotrophic ponds. The black line is based on locally weighted smoothing (LOESS) function. The coloured area represents 95% confidence interval for the fitted curve. Symbols represent individual measurements.