

## Correction

# Correction: Gu et al. Qualifying Land Use and Land Cover Dynamics and Their Impacts on Ecosystem Service in Central Himalaya Transboundary Landscape Based on Google Earth Engine. *Land* 2021, 10, 173

Changjun Gu <sup>1,2</sup>, Yili Zhang <sup>1,2,3</sup>, Linshan Liu <sup>1,\*</sup> , Lanhui Li <sup>4</sup> , Shicheng Li <sup>5</sup> , Binghua Zhang <sup>1,2</sup>, Bohao Cui <sup>1,2</sup> and Mohan Kumar Rai <sup>1,2</sup>

- <sup>1</sup> Key Laboratory of Land Surface Pattern and Simulation, Institute of Geographic Sciences and Natural Resources Research, CAS, Beijing 100101, China; gucj.18b@igsnr.ac.cn (C.G.); zhangyl@igsnr.ac.cn (Y.Z.); zhangbh.17b@igsnr.ac.cn (B.Z.); cuibh.19b@igsnr.ac.cn (B.C.); mkrai2019@igsnr.ac.cn (M.K.R.)
- <sup>2</sup> College of Resources and Environment, University of Chinese Academy of Sciences, Beijing 100049, China
- <sup>3</sup> CAS Center for Excellence in Tibetan Plateau Earth Sciences, Beijing 100101, China
- <sup>4</sup> Fujian Key Laboratory of Pattern Recognition and Image Understanding, Xiamen University of Technology, Xiamen 361024, China; lilh.15b@igsnr.ac.cn
- <sup>5</sup> Department of Land Resource Management, School of Public Administration, China University of Geosciences, Wuhan 430074, China; lisc@cug.edu.cn
- \* Correspondence: liuls@igsnr.ac.cn



**Citation:** Gu, C.; Zhang, Y.; Liu, L.; Li, L.; Li, S.; Zhang, B.; Cui, B.; Rai, M.K. Correction: Gu et al. Qualifying Land Use and Land Cover Dynamics and Their Impacts on Ecosystem Service in Central Himalaya Transboundary Landscape Based on Google Earth Engine. *Land* 2021, 10, 173. *Land* 2021, 10, 506. <https://doi.org/10.3390/land10050506>

Received: 23 April 2021  
Accepted: 30 April 2021  
Published: 10 May 2021

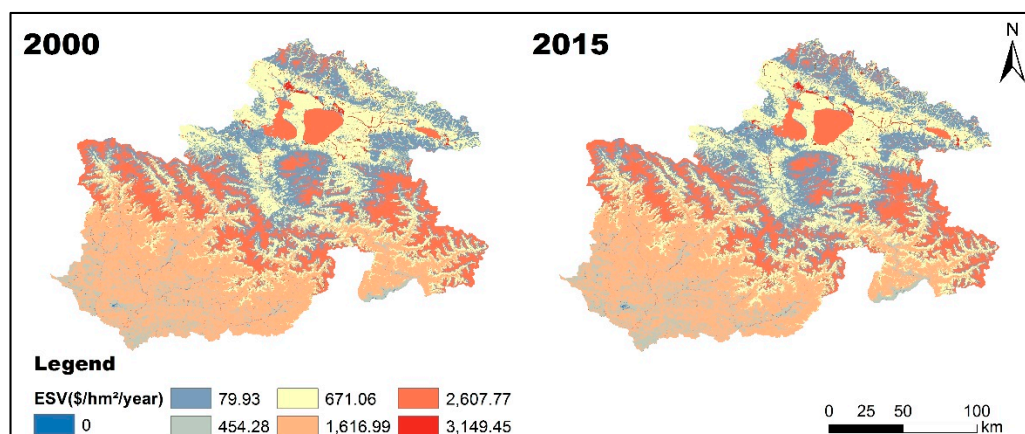
**Publisher's Note:** MDPI stays neutral with regard to jurisdictional claims in published maps and institutional affiliations.



**Copyright:** © 2021 by the authors. Licensee MDPI, Basel, Switzerland. This article is an open access article distributed under the terms and conditions of the Creative Commons Attribution (CC BY) license (<https://creativecommons.org/licenses/by/4.0/>).

## Error in Figure

In the original article [1], there was a mistake in Figure 5. The distribution of ESVs in the KSL in 2000 and 2015. as published. Figure 5 and Figure 2 were same figure, and Figure 5 should be the presentation of the distributions of ESVs. The corrected Figure 5 appears below. The authors apologize for any inconvenience caused and state that the scientific conclusions are unaffected. The original article has been updated.



## Reference

1. Gu, C.; Zhang, Y.; Liu, L.; Li, L.; Li, S.; Zhang, B.; Cui, B.; Rai, M.K. Qualifying Land Use and Land Cover Dynamics and Their Impacts on Ecosystem Service in Central Himalaya Transboundary Landscape Based on Google Earth Engine. *Land* 2021, 10, 173. [[CrossRef](#)]