

Figure S1. Correlation diagram of $\delta^{13}\text{C}_{\text{sid}}$ and $\delta^{18}\text{O}_{\text{sid}}$ values.

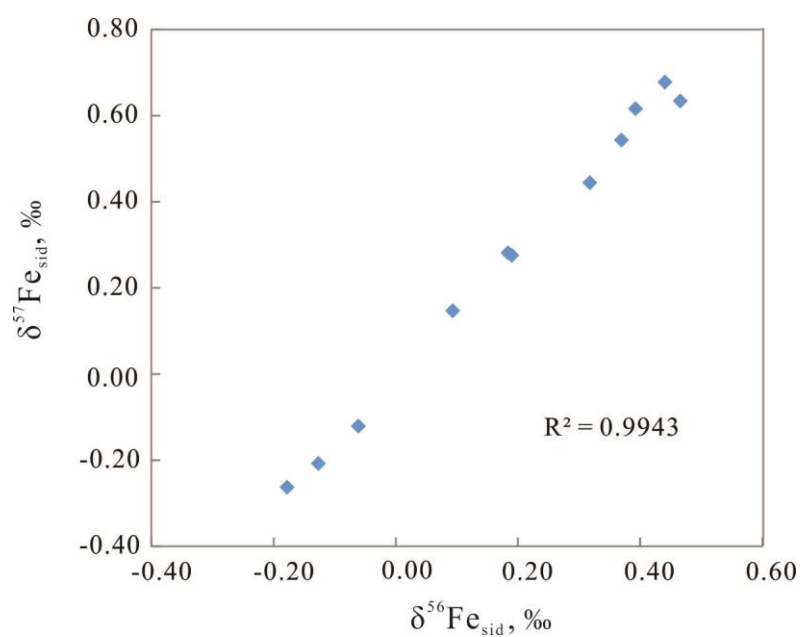


Figure S2. A plot of $\delta^{57}\text{Fe}$ - $\delta^{56}\text{Fe}$ values showing an entirely mass-dependent ($R^2 = 0.99$)