

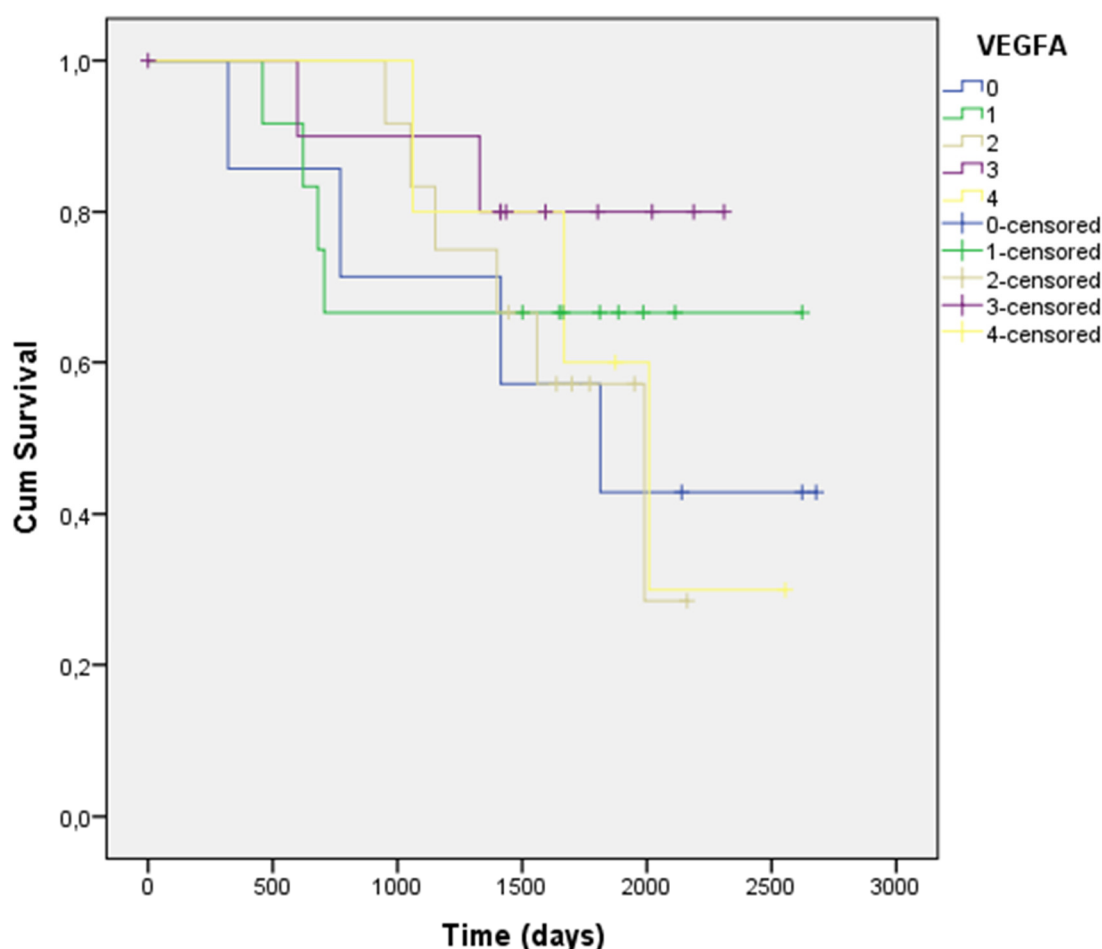
Supplementary Materials

# Correlation between the Expression of Angiogenic Factors and Stem Cell Markers in Human Uveal Melanoma

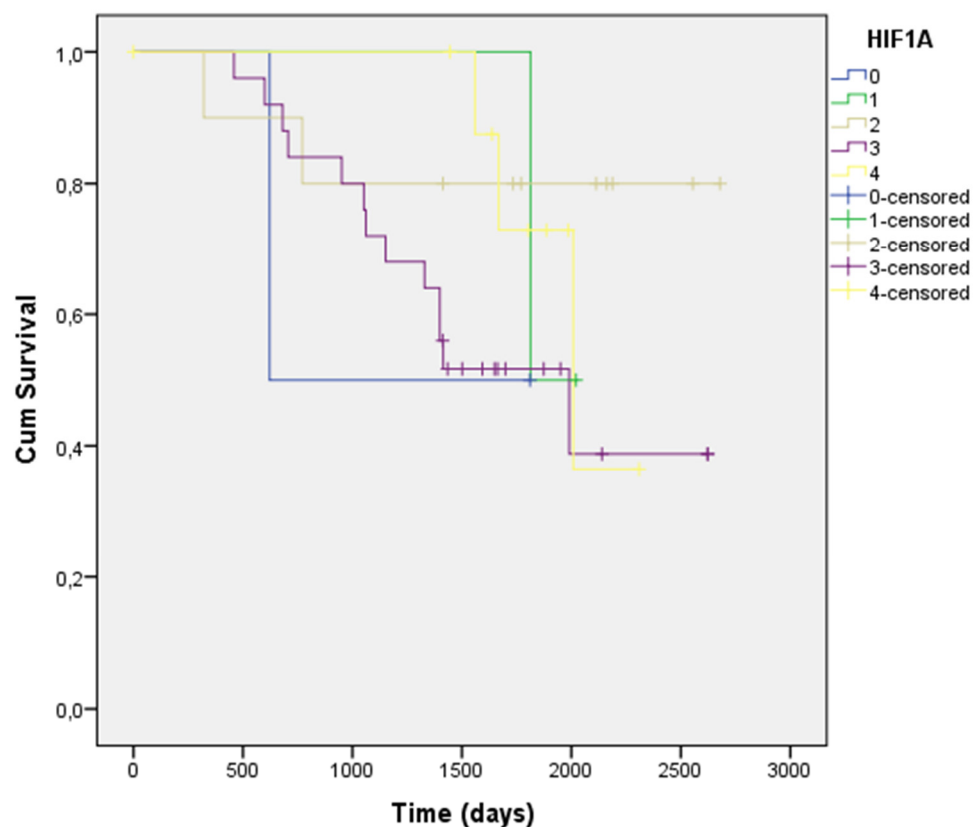
**Table S1.** Spearman statistical analysis showed no significant association between pathological markers, such as sclera and nervus opticus infiltration and the expression of genes investigated in this study.

		FZD6	HIF1 $\alpha$	VEGFA	Melanin
Sclera infiltration	Correlation coefficient	-,200	319*	,035	-,020
	Sig. (2-tailed)	,198	,042	,830	,902
	N	43	41	39	41
Nervus opticus infiltration	Correlation coefficient	-,192	,139	-,007	-,126
	Sig. (2-tailed)	,192	,358	,962	,406
	N	48	46	44	46

\*Correlation is significant at the 0.05 level (2-tailed probe).



**Figure S1.** Kaplan–Meier curves showed no significant correlation between the VEGFA expression and the survival rate (Mantel–Cox test,  $n = 47$ ,  $p = 0.757$ ).



**Figure S2.** No correlation was found between the HIF-1 $\alpha$  expression and the survival of the patients with UM (Mantel–Cox test,  $n = 49$ ,  $p = 0.336$ ).

**Publisher’s Note:** MDPI stays neutral with regard to jurisdictional claims in published maps and institutional affiliations.



© 2020 by the authors. Licensee MDPI, Basel, Switzerland. This article is an open access article distributed under the terms and conditions of the Creative Commons Attribution (CC BY) license (<http://creativecommons.org/licenses/by/4.0/>).