

Supplementary Figures

Histopathological examination of heart tissue:

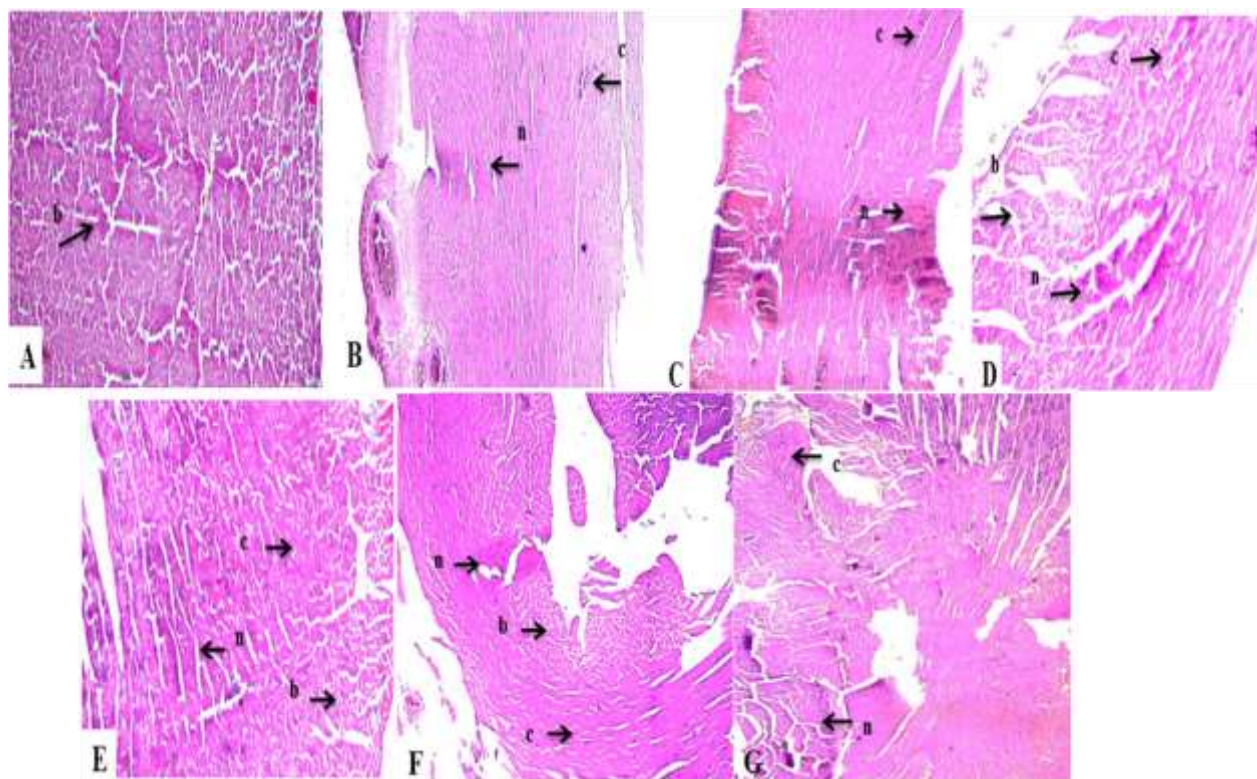


Figure S1: H & E staining of heart tissue of normal (A), diseased (B), Positive control (C), *C. sativum* high dose (D), *C. limon* high dose (E), low dose combination (F) and high dose combination (G).

Histopathological examination of aorta tissue:

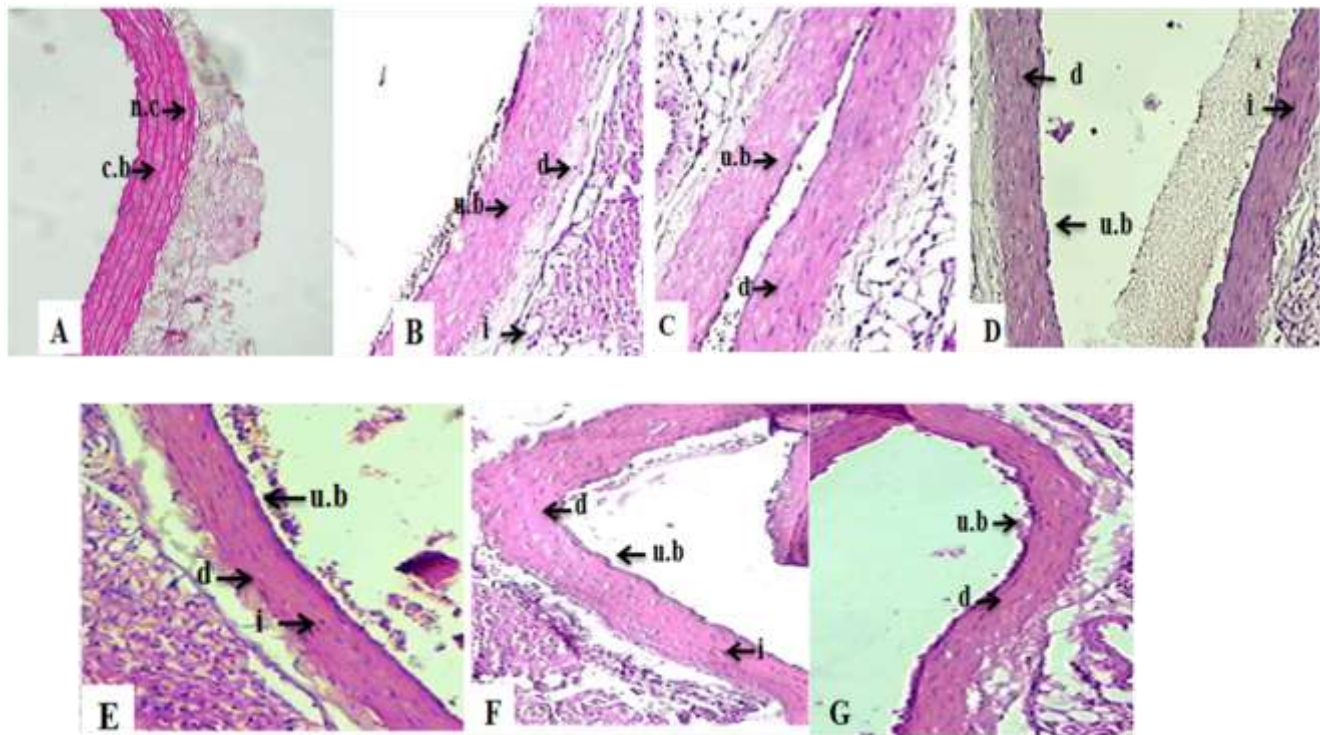


Figure S2: H & E staining of aorta tissue of normal (A), diseased (B), Positive control (C), *C. sativum* high dose (D), *C. limon* high dose (E), low dose combination (F) and high dose combination (G)

Histopathological examination of kidney tissue:

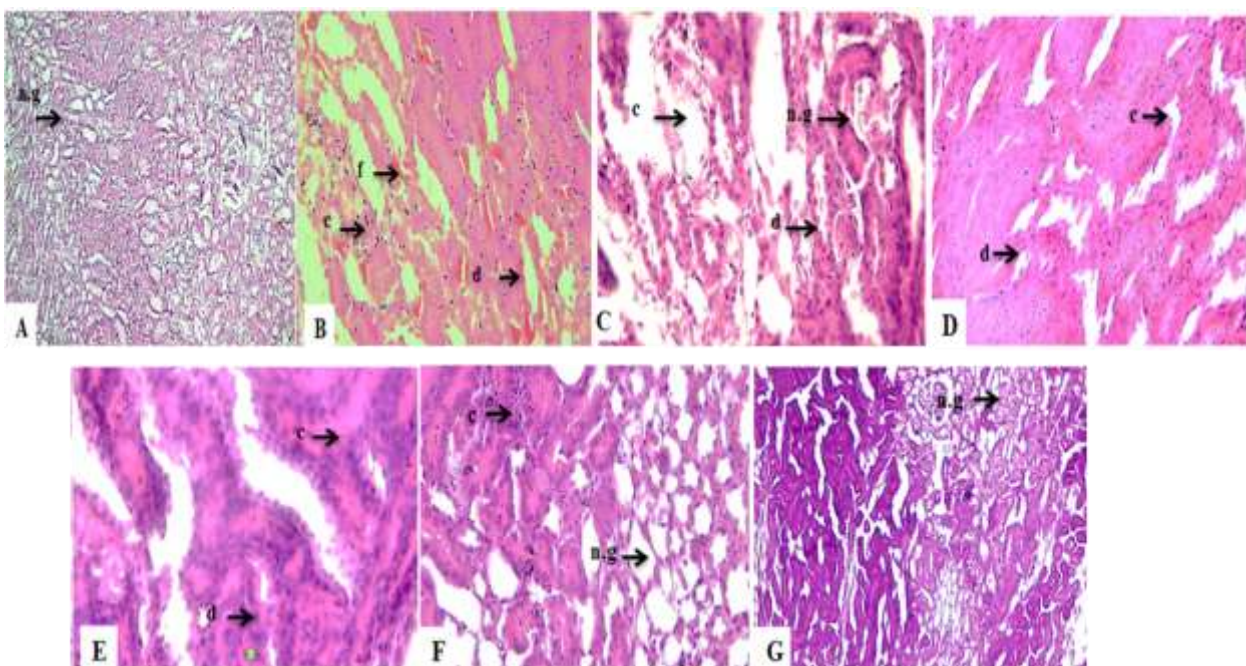


Figure S3: H & E staining of kidney tissue of normal (A), diseased (B), Positive control (C), *C. sativum* high dose (D), *C. limon* high dose (E), low dose combination (F) and high dose combination (G)

Histopathological examination of liver tissue

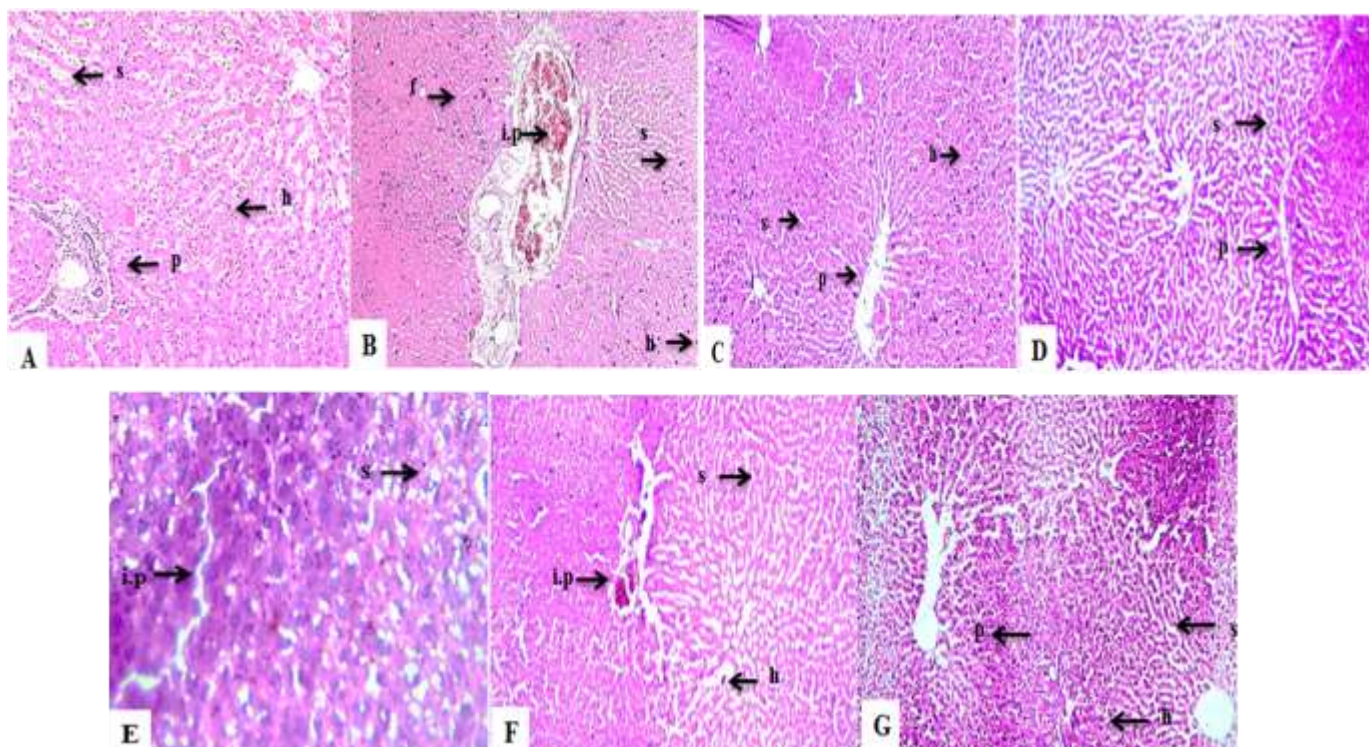


Figure S4: H & E staining of liver tissue of normal (A), diseased (B), Positive control (C), *C. sativum* high dose (D), *C. limon* high dose (E), low dose combination (F) and high dose combination (G)