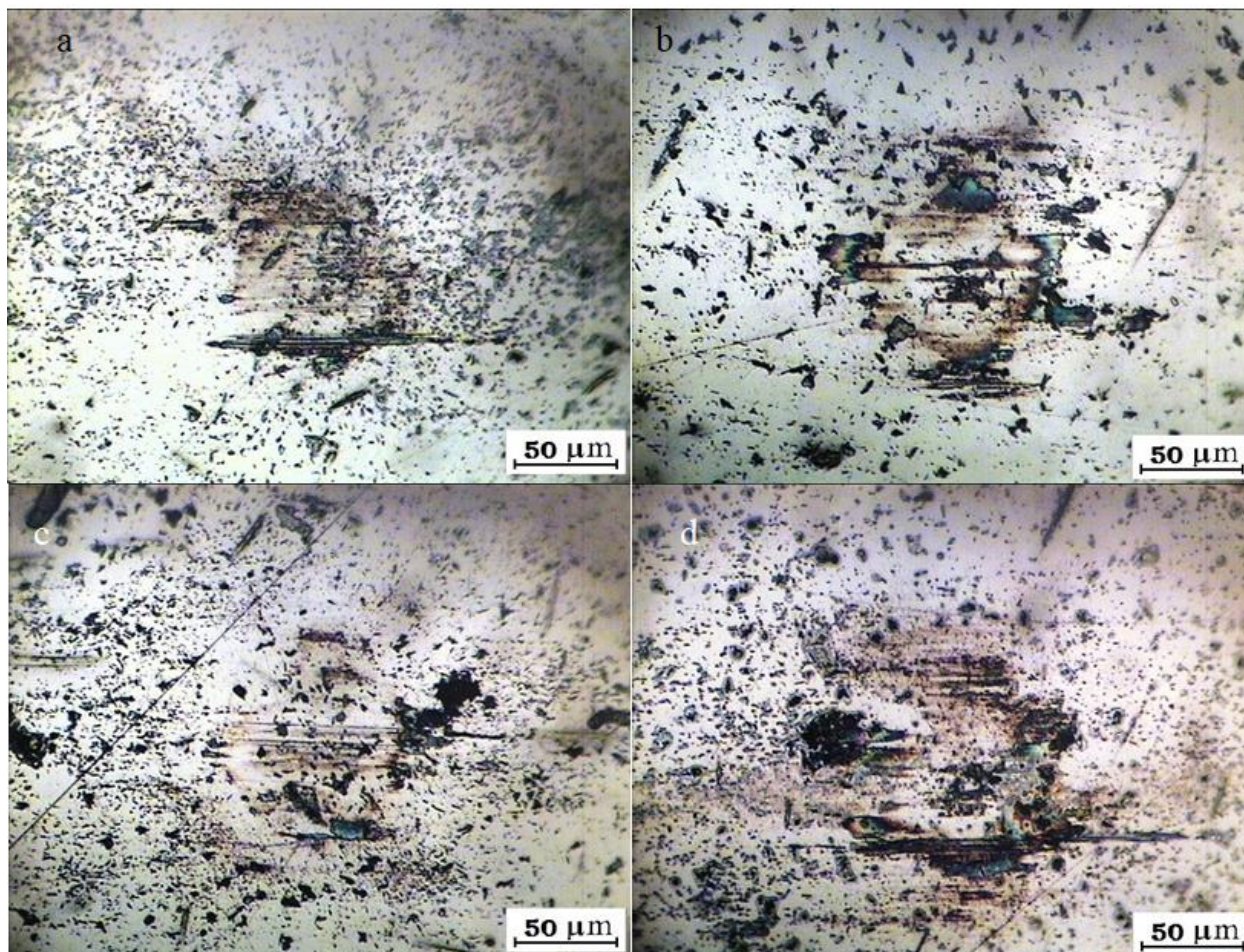


*Supplementary Material*

## Tungsten Disulfide Inorganic Nanotubes Functionalized by PTFE for Friction Application

T. Levin<sup>1</sup>, J.-P. Lellouche<sup>1\*</sup>, Y. Harel<sup>1</sup>, A. Moshkovich<sup>2</sup>, I. Lapsker<sup>2</sup>, A. Laikhtman<sup>2</sup> and L. Rapoport<sup>2\*</sup>



Additional optical microscopy images of wear spots on the surface of balls rubbed with synthetic PAO4 with 1% of WS<sub>2</sub>-INTs-1.4\*PTFE (a-d).