

Supplementary figures

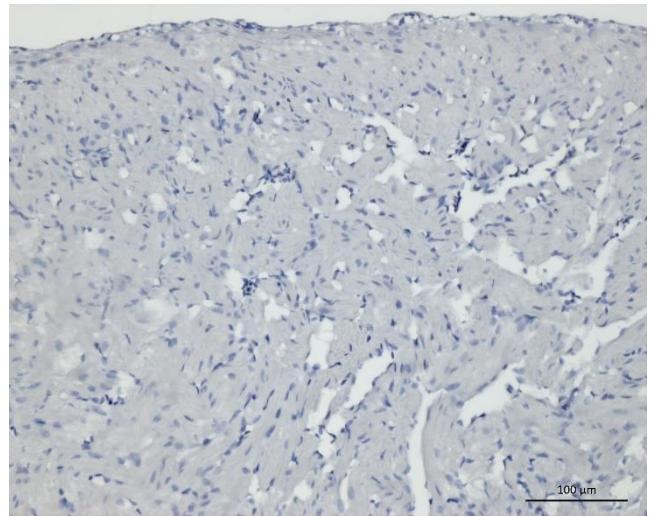
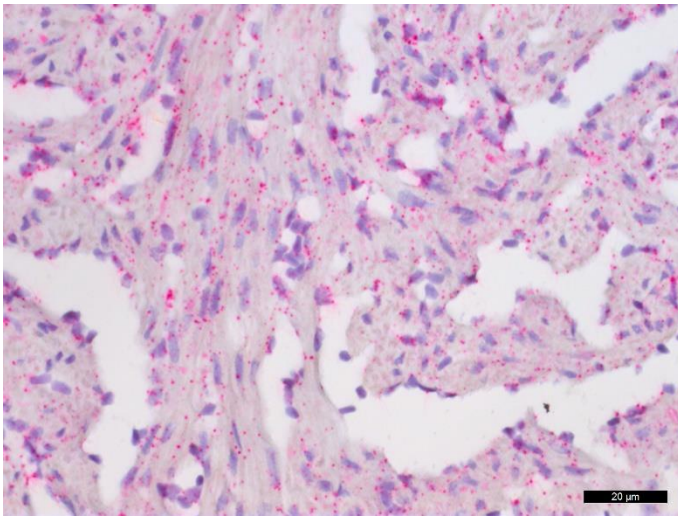


Figure S1. ISH positive control sections stained with Atlantic salmon (*Salmo salar*) peptidylprolyl isomerase B mRNA. Negative control sections stained with a probe against the *Bacillus subtilis* strain SMY methylglyoxal synthase (mgsA) gene.

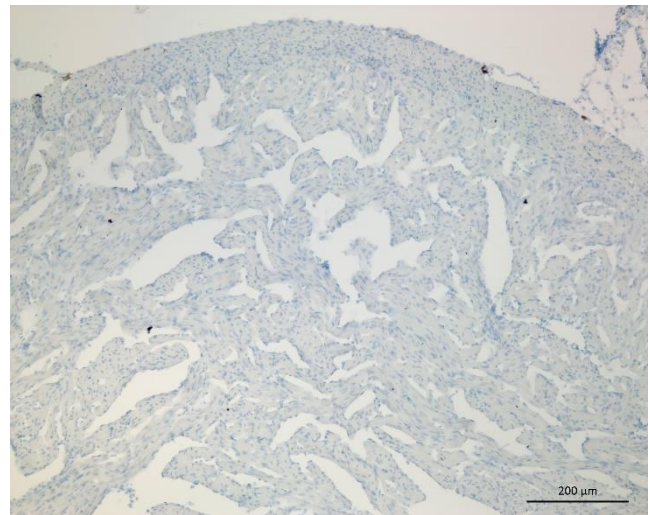
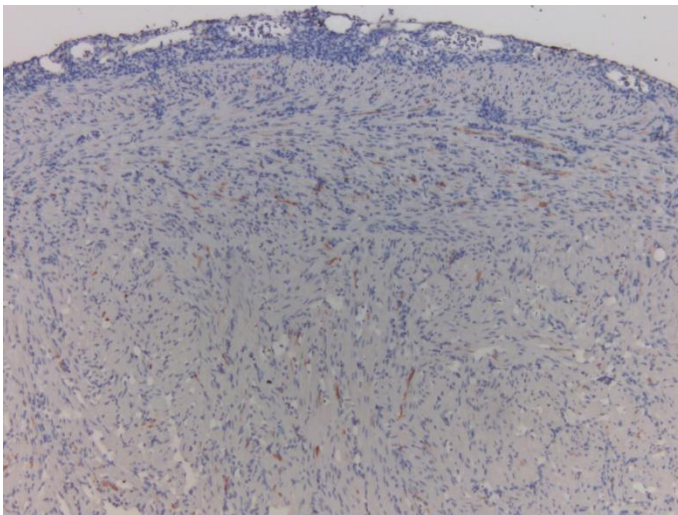


Figure S2. Immunohistochemistry (IHC) positive control Atlantic salmon (*Salmo salar*) heart sections and negative control tissues stained with PRV-1 σ1 antibody.