

Figure S1. Distribution of NDM-producing *Enterobacteriaceae*. (A) Sample collection diagram of large-scale chicken farms. (B) Species identification and distribution results of *bla*_{NDM}-carrying *Enterobacteriaceae*. (C) Type identification and distribution results of *bla*_{NDM} genes.

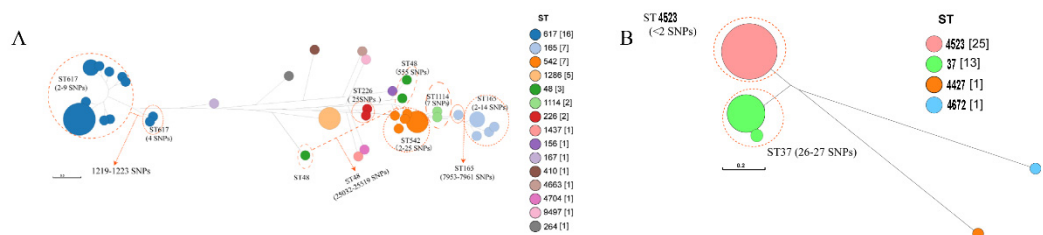


Figure S2. Phylogenetic trees of NDM-producing *Enterobacteriaceae*. (A) Phylogenetic trees of 50 NDM-producing *E. coli*. (B) Phylogenetic trees of 40 NDM-producing *K. pneumoniae*.

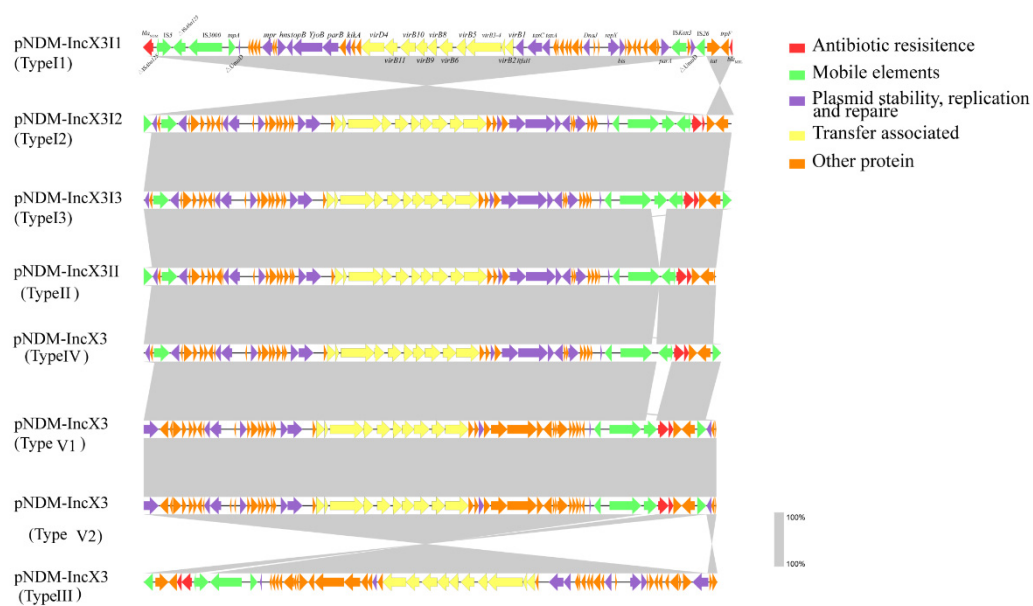


Figure S3. Comparison of genetic structure of *bla*_{NDM}-IncX3 plasmids. The arrows marked the direction of gene transcription, and the gene categories were differentiated by colors. the homologous regions were marked by grey shading.

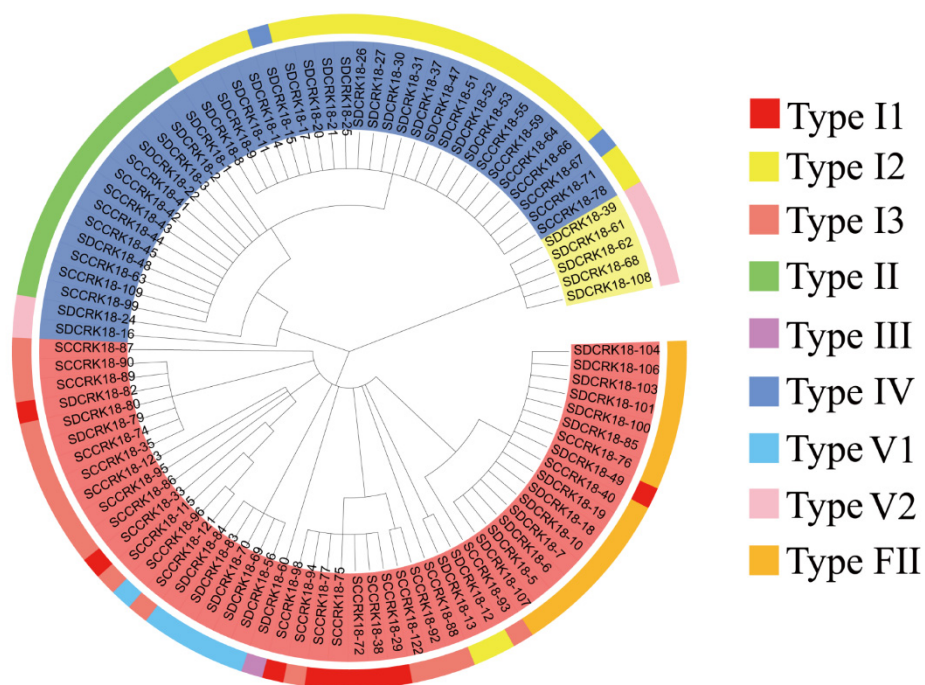


Figure S4. Distribution of 9 kinds of *bla*_{NDM}-plasmids among 95 Gram negative bacteria. Species and plasmids were indicated by different colors.

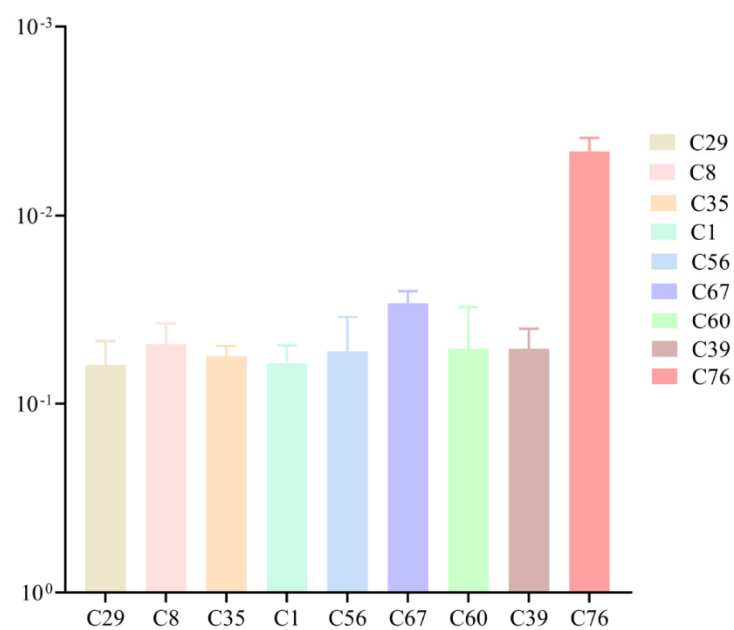


Figure S5. Transconjugative frequencies of *bla*_{NDM}-IncX3 and *bla*_{NDM}-IncF II plasmids.

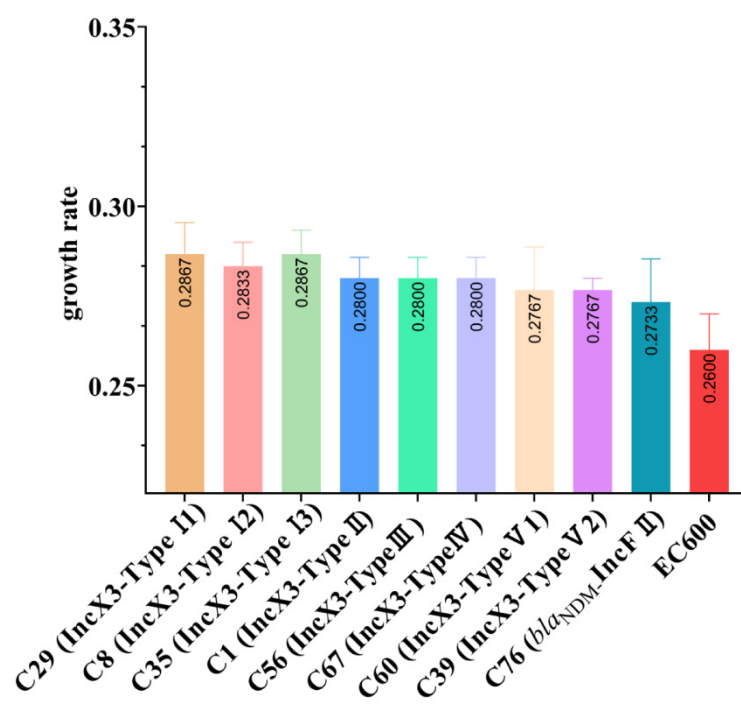


Figure S6. Growth rate of 9 kinds of transconjugants.

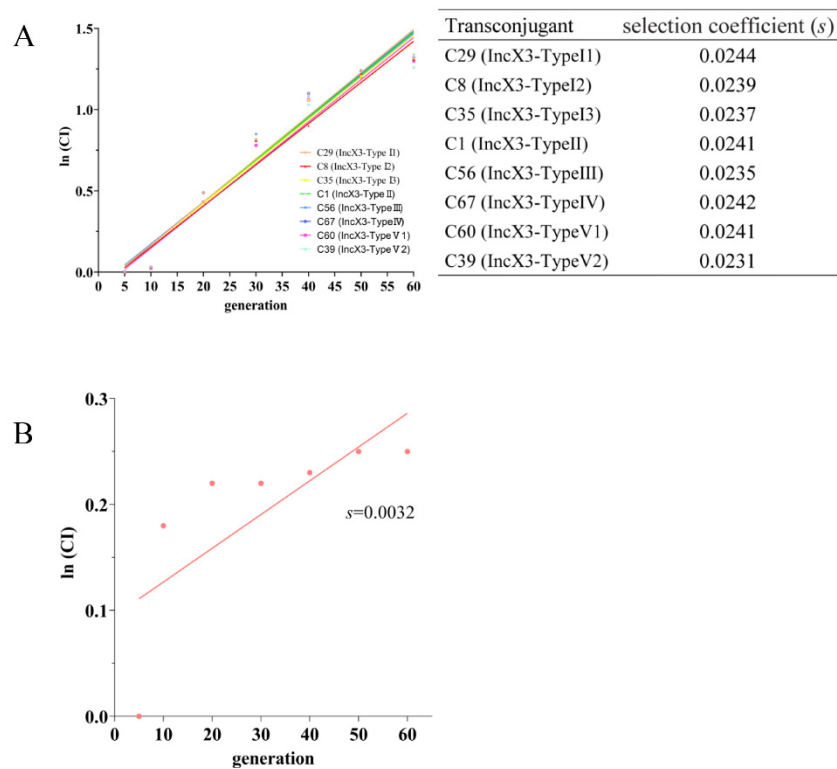


Figure S7. Selection coefficient of 9 kinds of transconjugants. (A) Selection coefficient of carrying *bla*_{NDM}-IncX3 transconjugants. (B) Selection coefficient of carrying *bla*_{NDM}-IncF II transconjugant.