

Supplemental information file

Table S1: Evaluation of ICT against IgG and IgM ELISAs using NcSAG1.

Diagnostic parameter*	NcSAG1 (n = 53)			
	IgG ELISA	IgM ELISA	IgG or IgM ELISA*	IgG and IgM ELISA [#]
Sensitivity	86.4	83.3	84.2	88.9
Specificity	93.5	64.4	93.5	85.3
Estimated prevalence (%)	41.5	11.8	38	21
Kappa value	0.8044	0.2293	0.7856	0.6376
Agreement proportion	90.6	66.7	90	86.1

*Parameters were calculated using an online statistical tool (www.vassarstats.net). The strength of agreement (kappa value) between each test and ELISA were graded as fair (0.21–0.40), moderate (0.41–0.60), and substantial (over 0.61).

* Samples positive for one or both antibodies (IgG or IgM) ELISA.

[#] Samples positive for both antibodies (IgG and IgM) ELISAs.

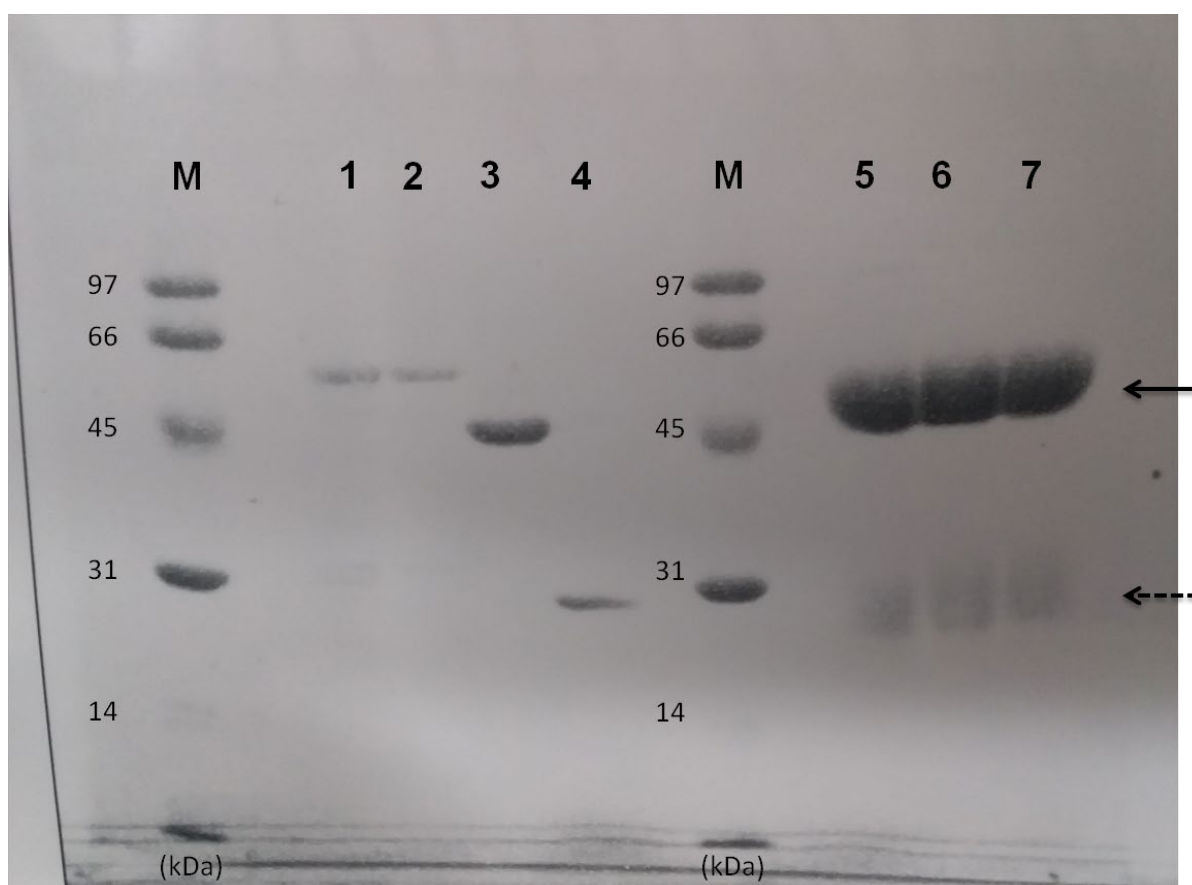


Figure S1. Original and unprocessed full-length blot image of SDS-PAGE for recombinant proteins and purified IgGs. Lanes 1-4 for recombinant proteins; lane 1, rNcSAG1+GST (57.9 kDa); lane 2, rNcGRA7+GST (59.6 kDa); lane 3, rNcGRA6+GST (50.9 kDa); lane 4, rGST (29.8 kDa); lanes 5-7 for purified rabbit IgG; lane 5, NcGRA6-antibodies; lane 6; NcGRA7-antibodies, and lane 7, NcGRA6-antibodies; lane M, low molecular weight marker. Solid black arrow refers to heavy chains and dashed black arrow refers to light chain of purified antibodies.

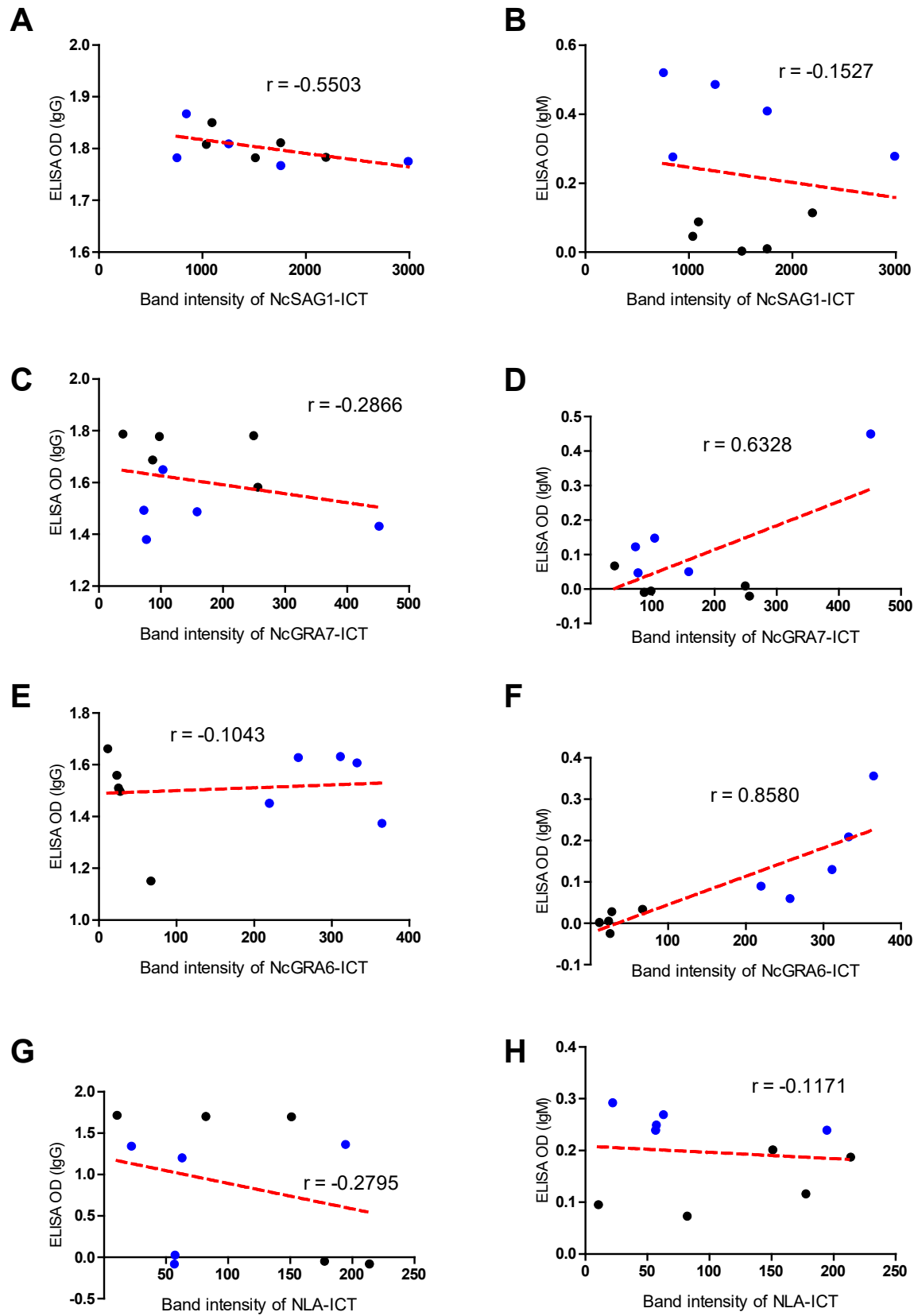


Figure S2. Pearson's correlation coefficient of ICT results against different antibodies and ELISA OD values of experimental acute and sub-acute mouse sera. Scatter graphs show the correlation between relative intensity of the test band in the ICT and absorbance values in the ELISA using mouse sera from acute (2 wpi; n = 5) and sub-acute (4 wpi; n = 5) phases of *N. caninum* infection. Correlation coefficients were calculated using Pearson's correlation coefficient: $|r| = 0.70$, strong correlation; $0.5 < |r| < 0.7$, moderately strong correlation; and $|r| = 0.3-0.5$ weak to moderate correlation. NcSAG1, correlation coefficient (r): $r = -0.5503$ for IgG-ELISA (A), and $r = -0.1527$ for IgM-ELISA (B). NcGRA7, $r = -0.2866$ for IgG-ELISA (C), and $r = 0.6328$ for IgM-ELISA (D). NcGRA6, $r = -0.1043$ for IgG-ELISA (E), and $r = 0.8580$ for IgM-ELISA (F). NLA, $r = -0.2795$ for IgG-ELISA (G), and $r = -0.1171$ for IgM-ELISA (H). Blue colored-dots refer to samples from 2 wpi while black-colored dots to those of 4 wpi.