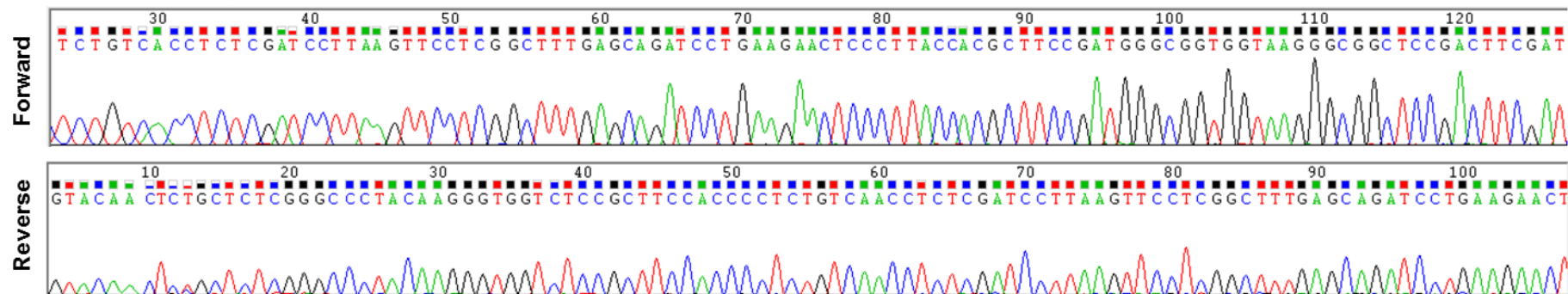




Figure S2. Representative chromatograms showing Sanger sequencing results for PCR amplicons generated from genomic DNA extracted and purified from Whatman® cards. (a): Results for the *Giardia duodenalis* *gdh* gene in sample G415; (b): Results for the *Cryptosporidium hominis* *gp60* gene in sample C578. For each sample, forward and reverse sequences are shown.

(a)



(b)

