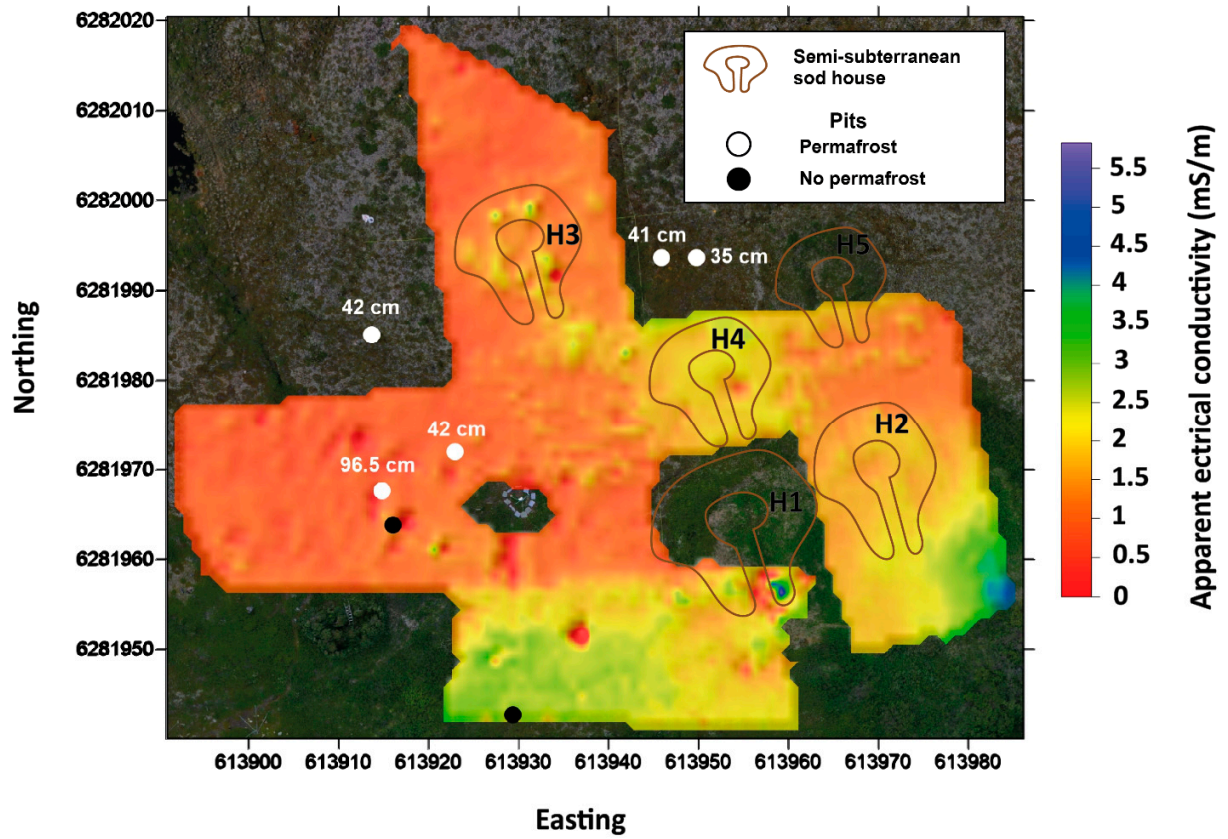


**Table S1.** Methodology for acquiring and processing images obtained by on-board sensors (July 20<sup>th</sup> 2022)

Step	Category	Parameters	Description
Acquisition	Hardware	Drone	DJI Mavic 2 PRO
		Sensor	Caméra Hasselblad L1D-20c
	Flight	Mode	Stop at shooting point
		Height (m)	80
		Y min N	56.667
		Y max N	56.669
		X min W	61.138
		X max	61.144
		Area covered (ha)	4
		Distance covered (m)	2 087
		Recovery rate (%)	70
		Number of images	74
	Sensor	Tilt (deg. of angle)	90
		Focal length (mm)	10
		Exposure time (s)	1/320
		Sensitivity (ISO)	100
	Images	Format	JPEG
		Width (px)	5 472
		Height (px)	3 648
		Resolution (dpi)	72
		Width (cm)	193
		Height (cm)	129
Treatment	Application	Agisoft metashape Professionnal	V 1.8.3
		Import images (nb)	74
	Treatments	Alignment (no. of images aligned) no georeferencing	74
		Import landmarks (nb)	10
		Marker placement on images	10
		EPSG points	32620
		Point cloud construction (nb points)	56 885 557
		MNE construction (cm/px)	3.8
		Orthomosaic construction (cm/px)	1.9
		MNE export (Mo) EPSG 32620	257
		Ortho export (Mo) EPSG 32620	856



**Figure S1.** Map of apparent electrical conductivity at a depth of 1.1 m as measured by electromagnetic induction (EMI). Photogrammetric site image derived from 80-meter elevation drone surveys. The topography of the ground features is shown as an elevation shadow underneath the EM values. The depth (e.g. 42 cm) of the permafrost table as revealed by test pits is indicated. Houses H1 to H5 are identified.