

Supplementary material

Table S1. MS spectroscopic analysis of N,N-Dimethyl-L-proline hydroiodide.

product ion	UPLC-(+)ESI-MS	UPLC-(-)ESI-MS
	TIC response 9.10 ⁷	TIC response 6.10 ⁶
m/z	144 (100) ^a MH ⁺	127 (80) ^a I ⁻
	166 (5) ^a MNa ⁺	277 (100) ^a (NaI) I ⁻
	287 (15) ^a 2M Na ⁺	

^aRelative intensity

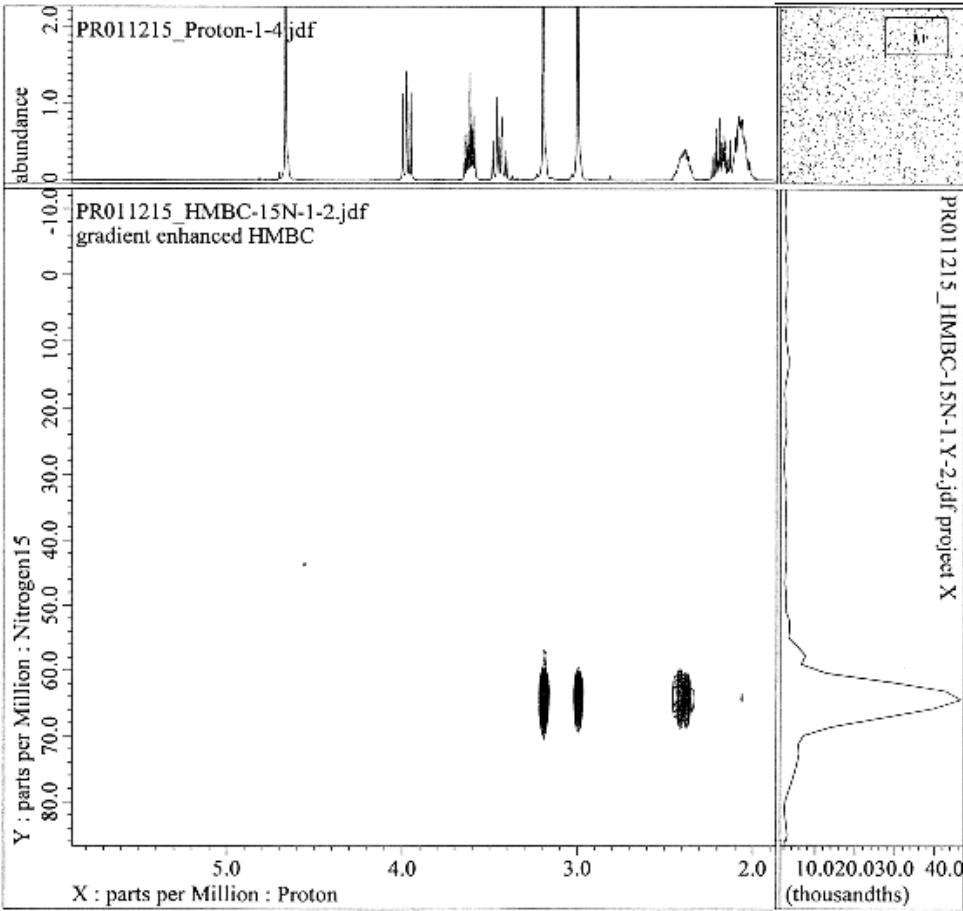


Figure S1. ¹⁵N HMBC spectra of N,N-dimethyl-L-proline hydroiodide