

Supplementary Materials: Effect of Ultrafast Imaging on Shear Wave Visualization and Characterization: An Experimental and Computational Study in a Pediatric Ventricular Model

Annette Caenen, Mathieu Pernot, Ingvild Kinn Ekroll, Darya Shcherbakova, Luc Mertens, Abigail Swillens and Patrick Segers

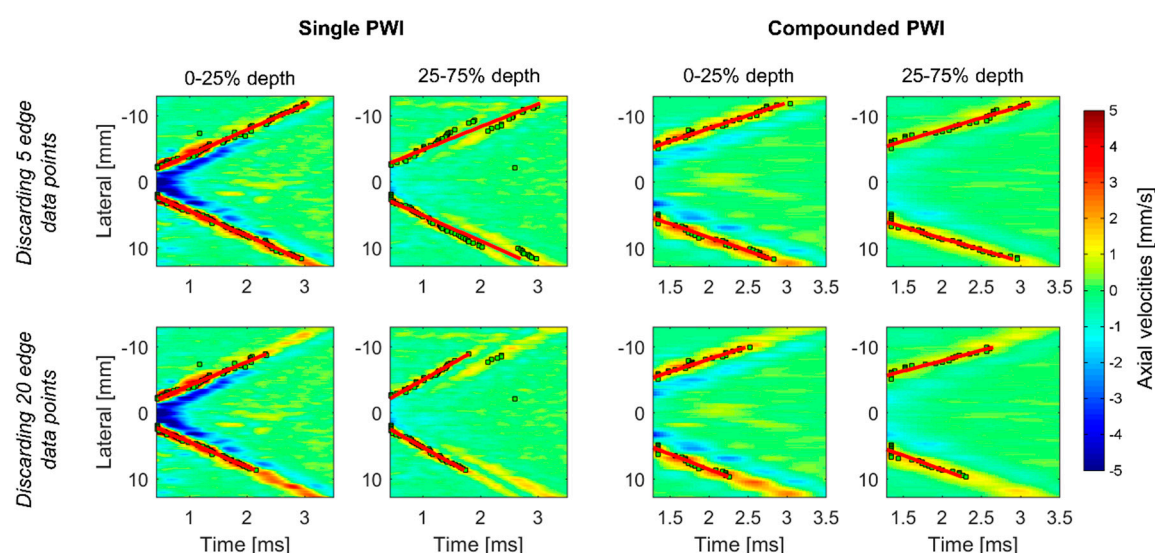


Figure S1. Illustration of the effect of discarding 5 or 20 data points at the edges of each shear wave during the fitting procedure in the time-of-flight (TOF) method: a comparison between different depths and imaging acquisitions. The green dots represent tracked maximal axial velocity, whereas the red line represent the linear TOF fit.