

Supplementary Materials: Stromal Activation by Tumor Cells: An *in Vitro* Study in Breast Cancer

Giuseppe Merlino ¹, Patrizia Miodini ¹, Biagio Paolini ², Maria Luisa Carcangiu ², Massimiliano Gennaro ³, Matteo Dugo ⁴, Maria Grazia Daidone ¹ and Vera Cappelletti ^{1,*}

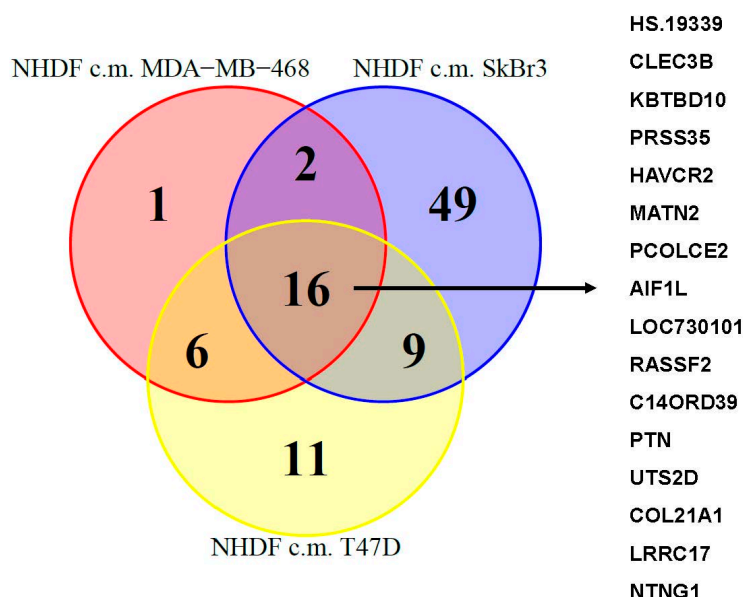


Figure S1. Venn diagram reporting common and private down-regulated genes in the class comparisons. Eulero-Venn diagram highlighting the numbers of differentially expressed (FDR < 0.0001) common and exclusive genes detected as down-regulated in samples derived from NHDF cells treated with serum-free medium conditioned by MDA-MB-468, by SkBr3 and by T47D breast cancer cell lines compared to their controls. The complete list of common down-regulated genes is also reported.

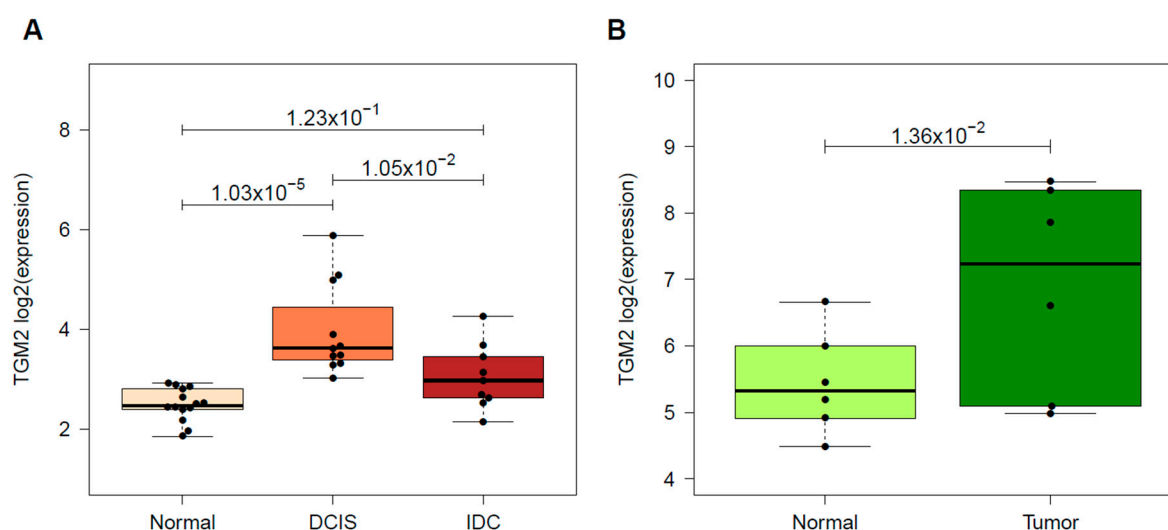


Figure S2. Expression of stromal TGM2 in literature datasets. **(A)** Boxplots of expression pattern of TGM2 as derived from microarray data (Ma *et al.*, ref [26]) in stromal cells adjacent to normal mammary cells, to DCIS and to invasive (IDC) lesions. Statistical significance was tested by ANOVA followed by Tukey's post-hoc test; **(B)** Boxplots of expression pattern of TGM2 as derived from microarray data (Planche *et al.*, ref [27]) in stromal cells adjacent to normal mammary cells and to tumor lesions. Statistical significance was assessed by two-tailed paired Student's *t*-test.

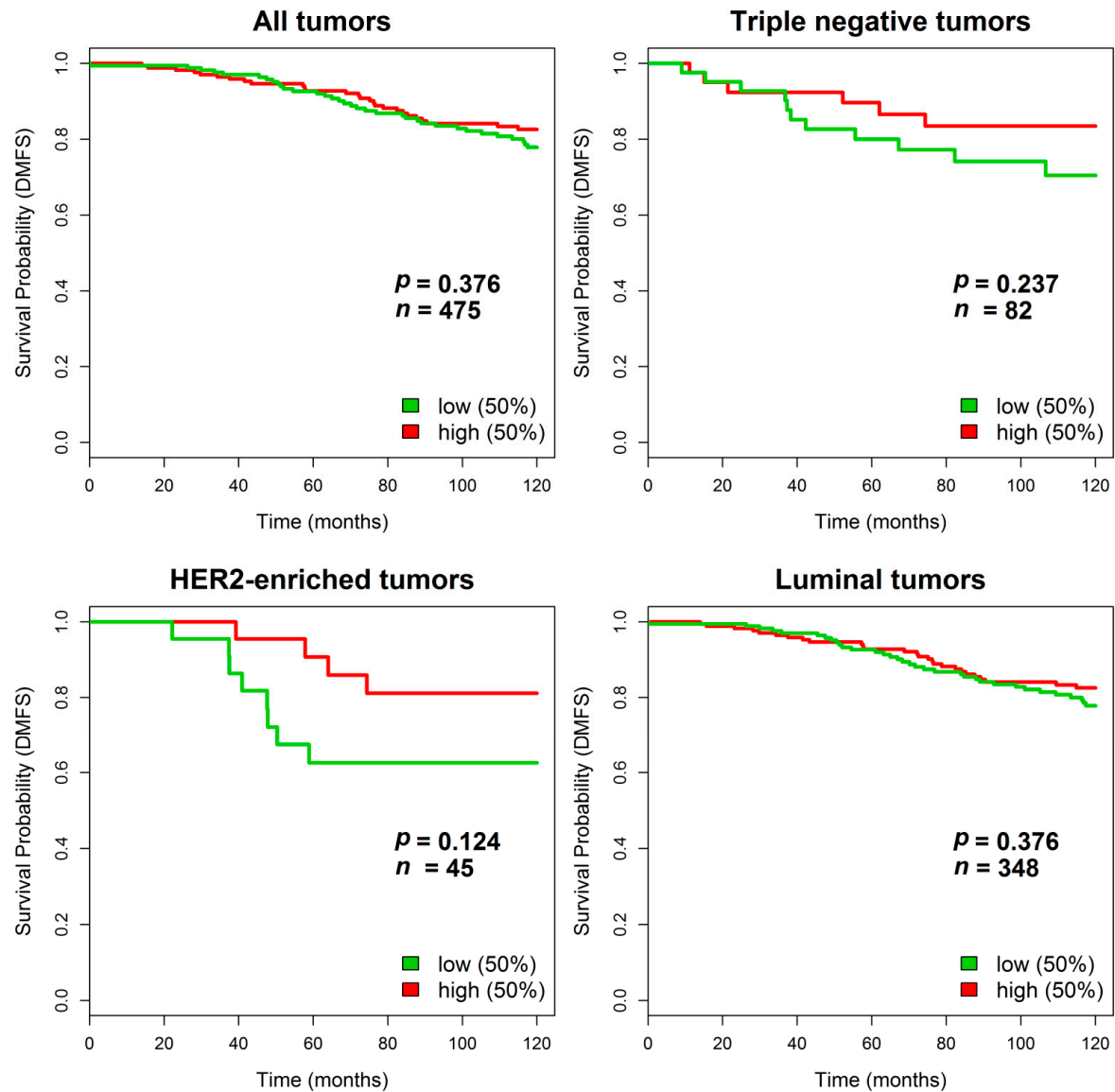


Figure S3. Kaplan-Meier analysis for the association of TGM2 expression stratified by median value in tumors from patients from the METABRIC dataset with disease-specific overall survival (DSS). Survival differences were evaluated by log-rank test.

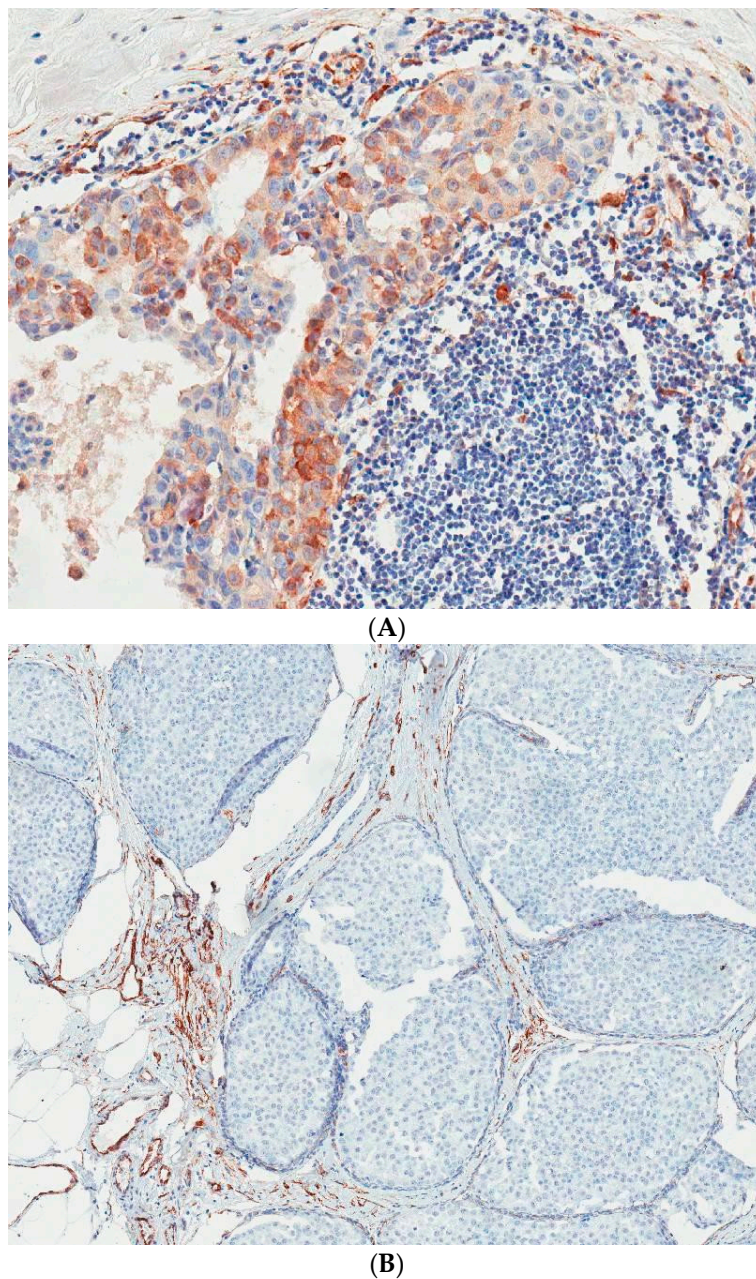


Figure S4. TG2 staining in clinical sections from patients with DCIS. (A) Strong staining in tumor cells; (B) Positive staining for TG2 in stromal cells. Magnification 20×.