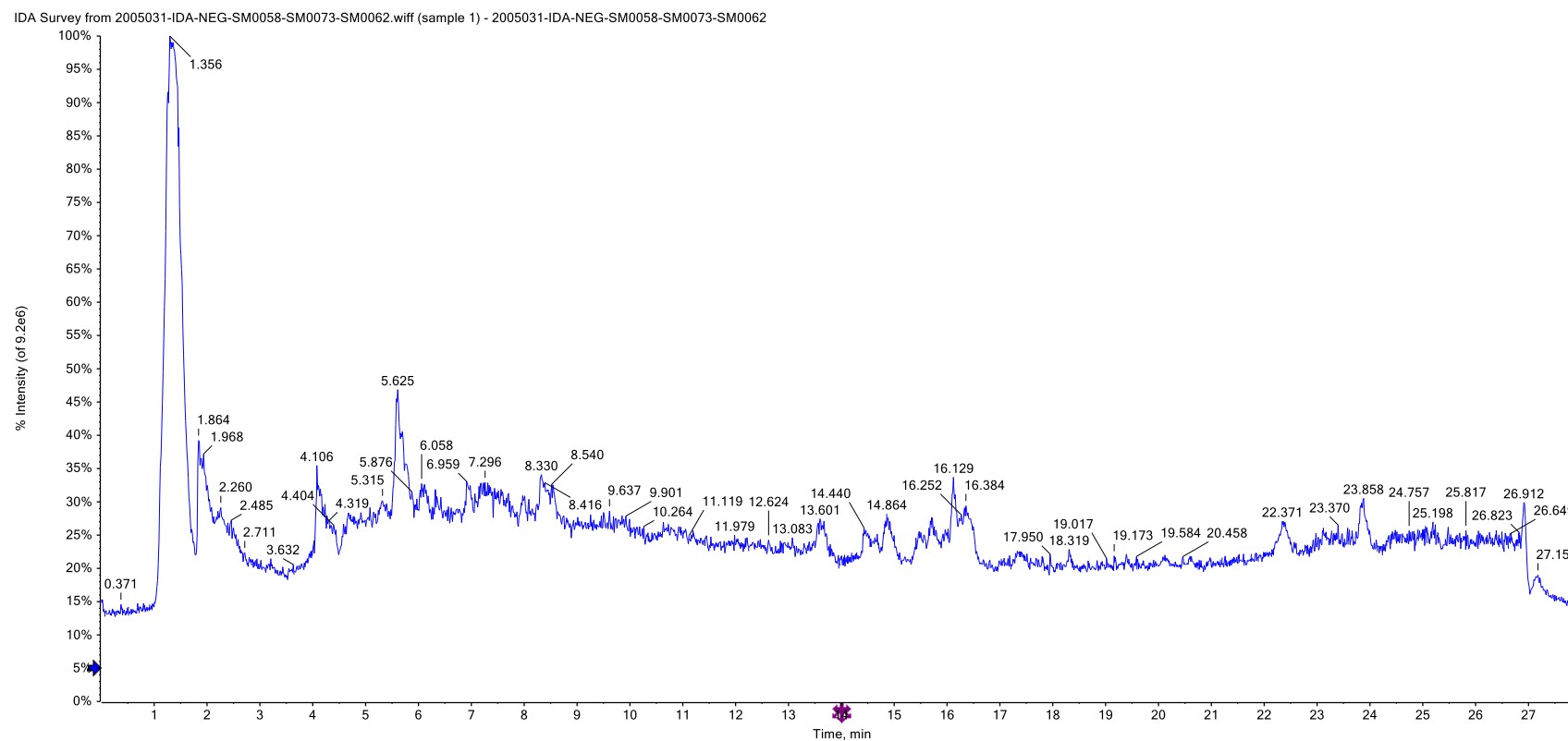


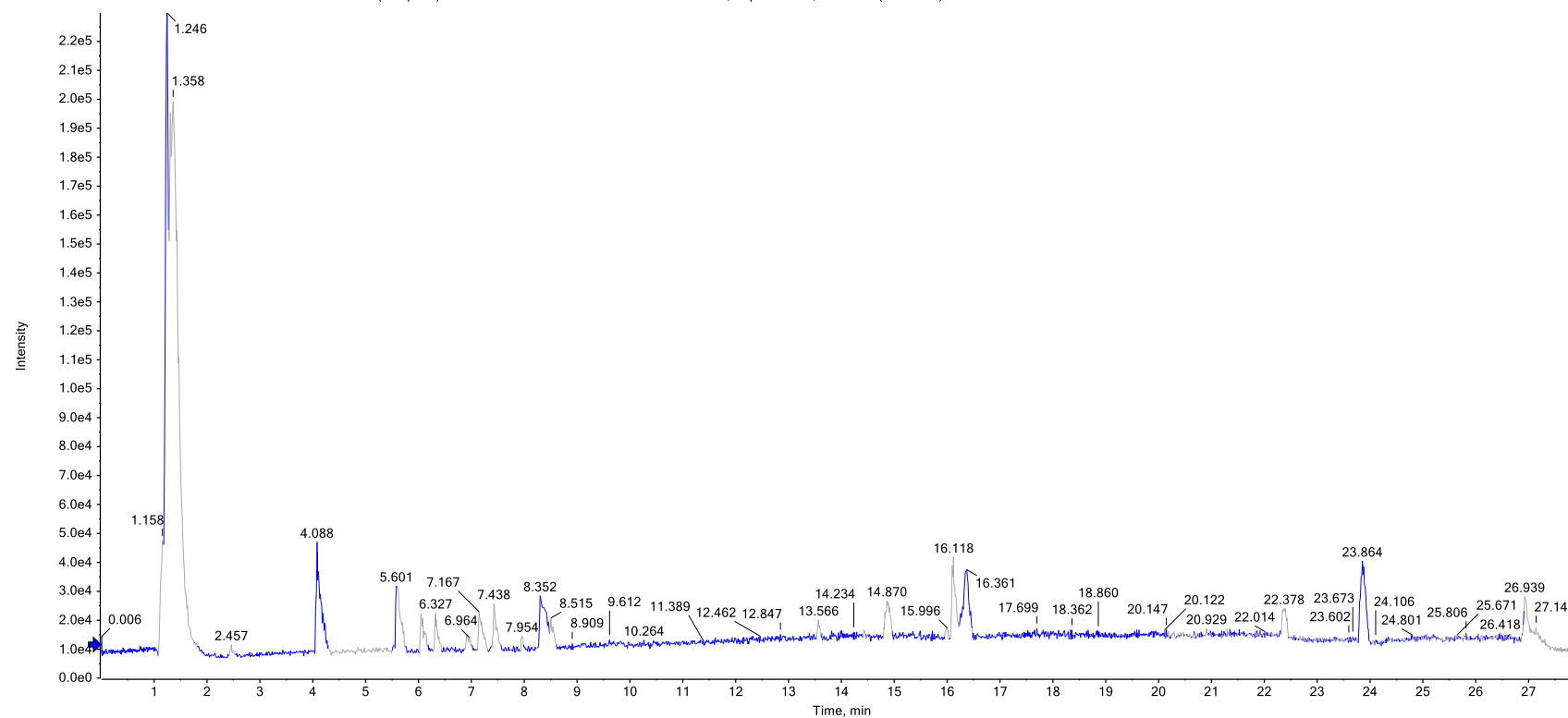
## Supplementary Material



**Figure 1.** Total ion chromatogram (TIC) recorded in the negative mode for *C. annua* extract.



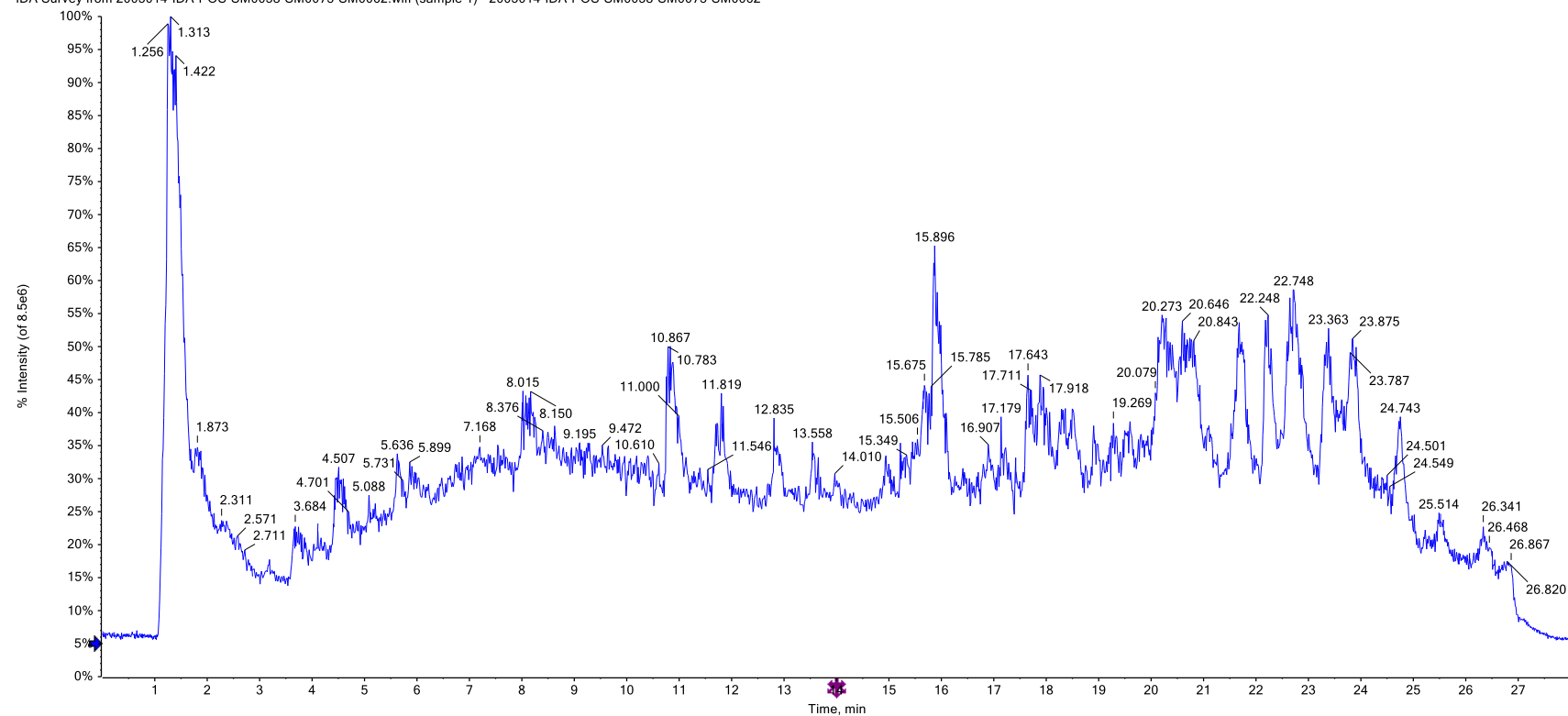
BPC from 2005031-IDA-NEG-SM0058-SM0073-SM0062.wiff (sample 1) - 2005031-IDA-NEG-SM0058-SM0073-SM0062, Experiment 1, -TOF MS (50 - 1000)



**Figure 2.** Base peak chromatogram (BPC) recorded in negative ion mode *C. annua* extract.



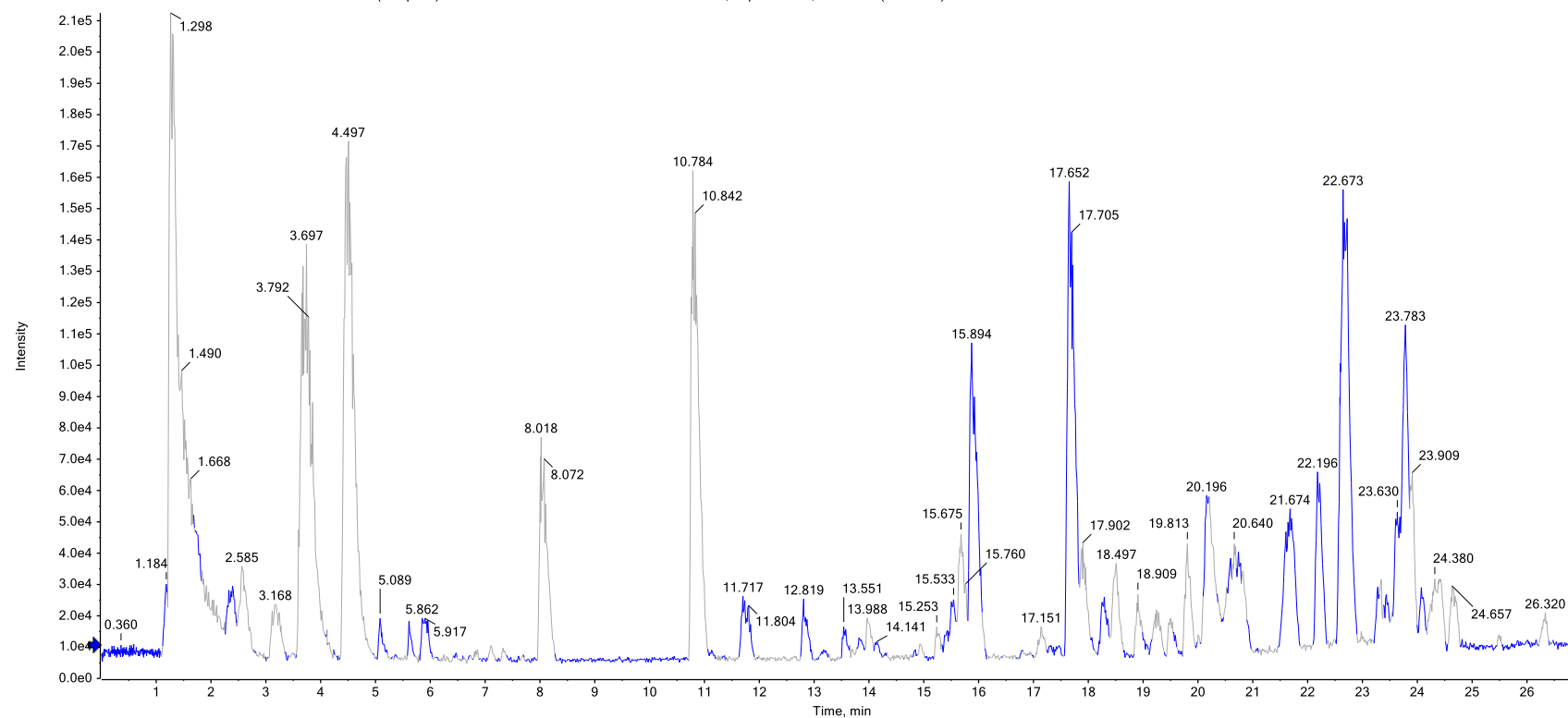
IDA Survey from 2005014-IDA-POS-SM0058-SM0073-SM0062.wiff (sample 1) - 2005014-IDA-POS-SM0058-SM0073-SM0062



**Figure 3.** Total ion chromatogram (TIC) recorded in the positive mode for *C annua* extract.



BPC from 2005014-IDA-POS-SM0058-SM0073-SM0062.wiff (sample 1) - 2005014-IDA-POS-SM0058-SM0073-SM0062, Experiment 1, +TOF MS (50 - 1000)



**Figure 4.** Base peak chromatogram (BPC) recorded in the positive mode for *C. annua* extract.