

**Table S1.** – Characteristics by Centre.

	Total N	Missing N	levels	Adherent to surveillanc e - Edinburgh	Adherent to surveillanc e - Glasgow	No surveillanc e - Edinburgh	No surveillanc e - Glasgow	Not adherent to surveillanc e - Edinburgh	Not adherent to surveillanc e - Glasgow	p-value
Total N (%)				142 (14.4)	160 (16.2)	167 (17.0)	424 (43.0)	38 (3.9)	54 (5.5)	
Age at diagnosis	985 (100.0)	0	Mean (SD)	64.5 (8.4)	64.0 (10.7)	70.4 (12.9)	71.0 (10.7)	65.2 (9.4)	67.6 (9.5)	<0.001
Sex	985 (100.0)	0	Female	38 (26.8)	30 (18.8)	32 (19.2)	74 (17.5)	13 (34.2)	9 (16.7)	0.047
			Male	104 (73.2)	130 (81.2)	135 (80.8)	350 (82.5)	25 (65.8)	45 (83.3)	
Year of diagnosis	985 (100.0)	0	Mean (SD)	2012.3 (1.9)	2013.0 (1.9)	2012.1 (1.7)	2012.3 (2.0)	2011.0 (1.5)	2013.5 (1.4)	<0.001
Child Pugh Stage	985 (100.0)	0	No Cirrhosis	0 (0.0)	10 (6.2)	16 (9.6)	126 (29.7)	0 (0.0)	5 (9.3)	<0.001
			A	67 (47.2)	83 (51.9)	69 (41.3)	100 (23.6)	15 (39.5)	17 (31.5)	
			B	64 (45.1)	50 (31.2)	72 (43.1)	137 (32.3)	22 (57.9)	24 (44.4)	
			C	11 (7.7)	17 (10.6)	10 (6.0)	61 (14.4)	1 (2.6)	8 (14.8)	
Alcoholic Liver Disease	985 (100.0)	0	No	75 (52.8)	67 (41.9)	118 (70.7)	213 (50.2)	20 (52.6)	20 (37.0)	<0.001
			Yes	67 (47.2)	93 (58.1)	49 (29.3)	211 (49.8)	18 (47.4)	34 (63.0)	
Viral hepatitis	985 (100.0)	0	No	88 (62.0)	106 (66.2)	143 (85.6)	370 (87.3)	25 (65.8)	43 (79.6)	<0.001
			Yes	54 (38.0)	54 (33.8)	24 (14.4)	54 (12.7)	13 (34.2)	11 (20.4)	
Non- alcoholic fatty liver disease	985 (100.0)	0	No	111 (78.2)	125 (78.1)	83 (49.7)	364 (85.8)	28 (73.7)	41 (75.9)	<0.001
			Yes	31 (21.8)	35 (21.9)	84 (50.3)	60 (14.2)	10 (26.3)	13 (24.1)	
Other	985 (100.0)	0	No	120 (84.5)	130 (81.2)	137 (82.0)	250 (59.0)	32 (84.2)	37 (68.5)	<0.001
			Yes	22 (15.5)	30 (18.8)	30 (18.0)	174 (41.0)	6 (15.8)	17 (31.5)	

All tests are Chi-square, except when denoted by † where Kruskal-Wallis tests used. SD – Standard Deviation.

**Table S2.** – Stage of disease by centre and surveillance adherence.

	Total N	Missing N		Adherent to surveillanc e - Edinburgh	Adherent to surveillanc e - Glasgow	No surveillanc e - Edinburgh	No surveillanc e - Glasgow	Not adherent to surveillanc e - Edinburgh	Not adherent to surveillanc e - Glasgow	p-value
Total N (%)				142 (14.4)	160 (16.2)	167 (17.0)	424 (43.0)	38 (3.9)	54 (5.5)	
BCLC Stage at diagnosis	985	0	0/A	98 (69.0)	61 (38.1)	39 (23.4)	39 (9.2)	6 (15.8)	9 (16.7)	<0.001
			B	35 (24.6)	33 (20.6)	32 (19.2)	96 (22.6)	16 (42.1)	15 (27.8)	
			C	7 (4.9)	45 (28.1)	60 (35.9)	174 (41.0)	11 (28.9)	17 (31.5)	
			D	2 (1.4)	21 (13.1)	36 (21.6)	115 (27.1)	5 (13.2)	13 (24.1)	
AFP level	941	44	<100	117 (82.4)	124 (77.5)	73 (43.7)	226 (53.3)	21 (55.3)	40 (74.1)	<0.001
			>1000	4 (2.8)	12 (7.5)	34 (20.4)	131 (30.9)	8 (21.1)	8 (14.8)	
			100–1000	17 (12.0)	24 (15.0)	25 (15.0)	62 (14.6)	4 (10.5)	6 (11.1)	
			Not known	0 (0.0)	0 (0.0)	0 (0.0)	5 (1.2)	0 (0.0)	0 (0.0)	
			(Missing)	4 (2.8)	0 (0.0)	35 (21.0)	0 (0.0)	5 (13.2)	0 (0.0)	
Treatment	983	2	Liver resection	7 (4.9)	17 (10.6)	23 (13.8)	13 (3.1)	1 (2.6)	3 (5.6)	<0.001

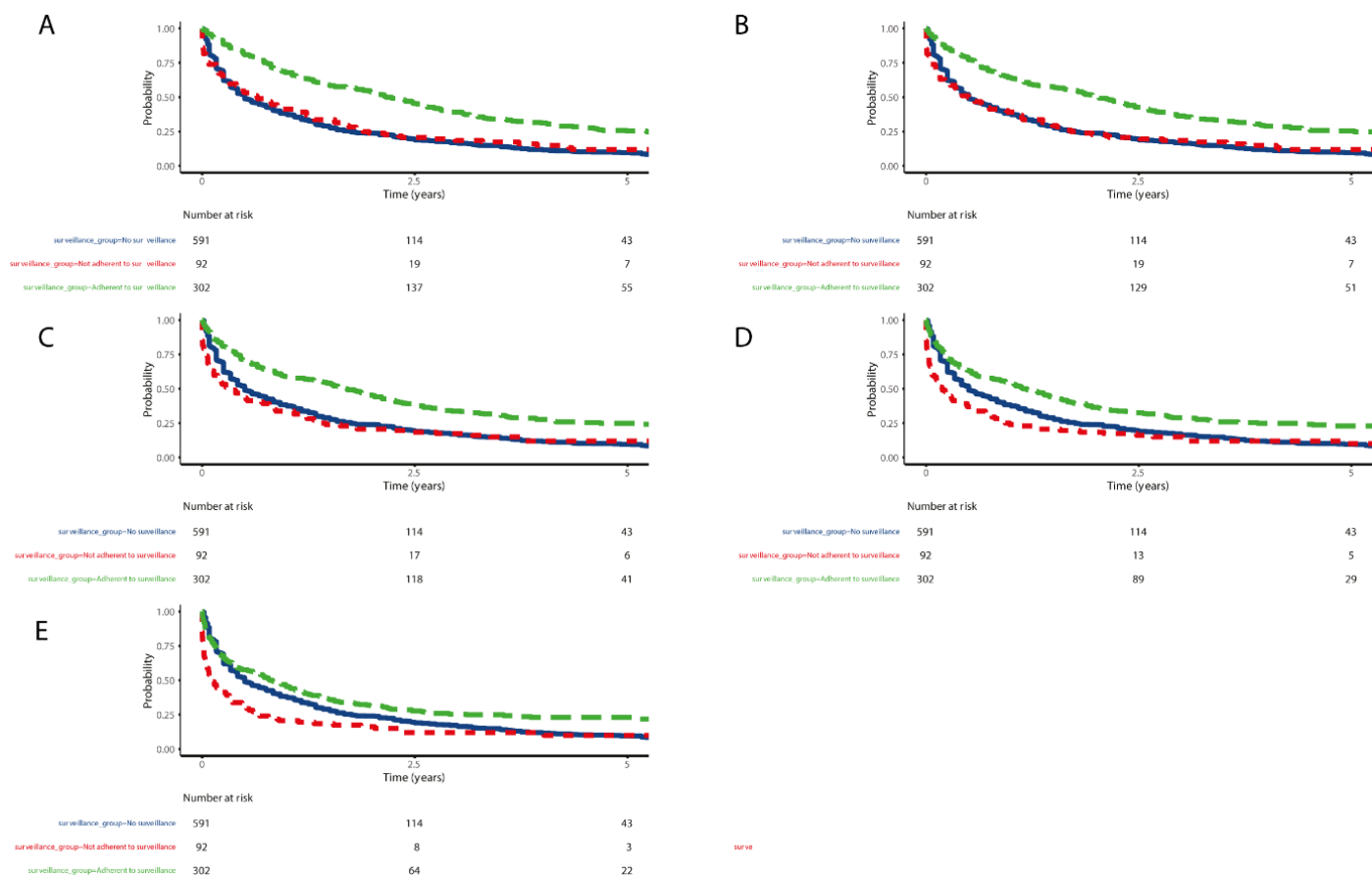
	Total N	Missing N		Adherent to surveillance e - Edinburgh	Adherent to surveillance e - Glasgow	No surveillance e - Edinburgh	No surveillance e - Glasgow	Not adherent to surveillance e - Edinburgh	Not adherent to surveillance e - Glasgow	p-value
Treatment type	983	2	Liver transplant	31 (21.8)	14 (8.8)	1 (0.6)	7 (1.7)	3 (7.9)	0 (0.0)	<0.001
			Ablative therapies	22 (15.5)	21 (13.1)	8 (4.8)	12 (2.8)	4 (10.5)	5 (9.3)	
			Sorafenib	3 (2.1)	4 (2.5)	4 (2.4)	18 (4.2)	0 (0.0)	2 (3.7)	
			Supportive care only	31 (21.8)	54 (33.8)	91 (54.5)	291 (68.6)	16 (42.1)	31 (57.4)	
			TACE	47 (33.1)	50 (31.2)	39 (23.4)	83 (19.6)	14 (36.8)	13 (24.1)	
			(Missing)	1 (0.7)	0 (0.0)	1 (0.6)	0 (0.0)	0 (0.0)	0 (0.0)	
			Curative therapy	60 (42.3)	52 (32.5)	32 (19.2)	32 (7.5)	8 (21.1)	8 (14.8)	
			Palliative therapy	50 (35.2)	54 (33.8)	43 (25.7)	101 (23.8)	14 (36.8)	15 (27.8)	
Treatment intent	983	2	Supportive care only	31 (21.8)	54 (33.8)	91 (54.5)	291 (68.6)	16 (42.1)	31 (57.4)	<0.001
			(Missing)	1 (0.7)	0 (0.0)	1 (0.6)	0 (0.0)	0 (0.0)	0 (0.0)	
			Curative	60 (42.3)	52 (32.5)	32 (19.2)	32 (7.5)	8 (21.1)	8 (14.8)	
			Palliative	81 (57.0)	108 (67.5)	134 (80.2)	392 (92.5)	30 (78.9)	46 (85.2)	
			(Missing)	1 (0.7)	0 (0.0)	1 (0.6)	0 (0.0)	0 (0.0)	0 (0.0)	

BCLC – Barcelona Clinic Liver Cancer, SD – Standard Deviation, OR – Odds Ratio. Curative therapies are Surgery and Transplant.

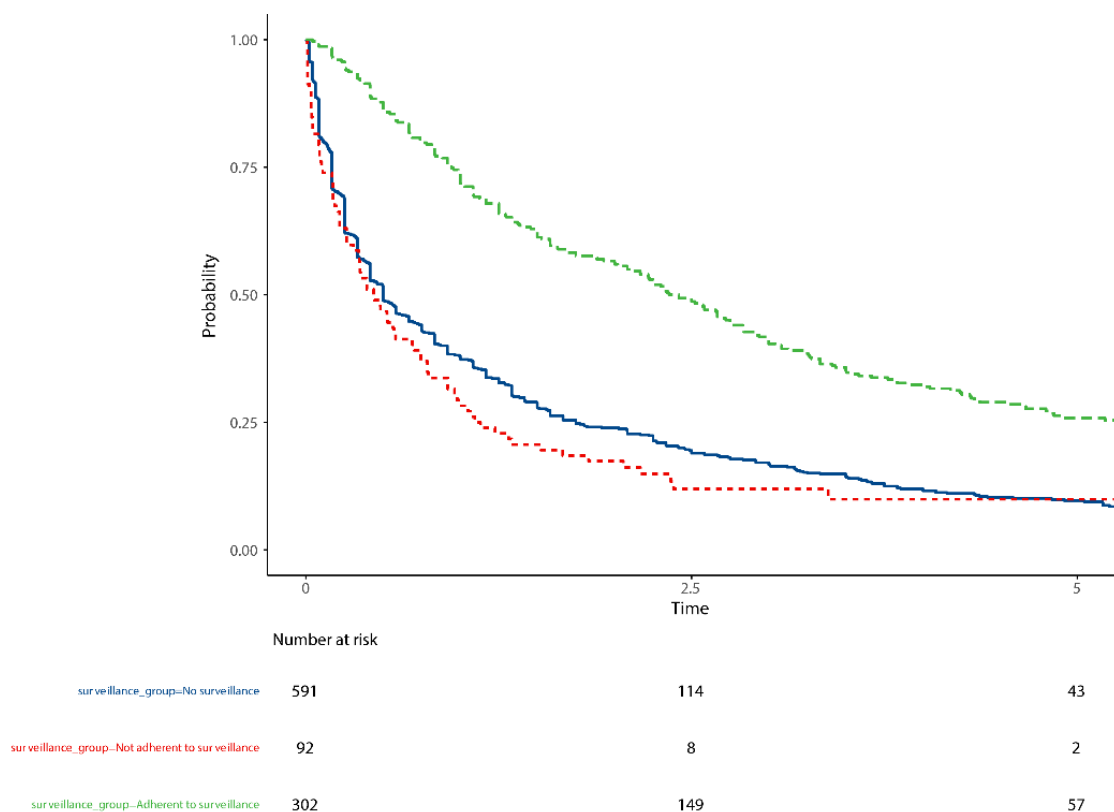
**Table S3.** - Predictors of adherence to surveillance (including centre).

Dependent: Surveillance Adherence		Not adherent to surveillance	Adherent to surveillance	OR (univariable)	OR (multivariable)
Age at diagnosis	Mean (SD)	66.6 (9.5)	64.2 (9.7)	0.97 (0.95-1.00, $p = 0.042$ )	0.98 (0.95-1.01, $p = 0.132$ )
Sex	Female	22 (24.4)	68 (75.6)	-	-
	Male	70 (23.0)	234 (77.0)	1.08 (0.61-1.85, $p = 0.780$ )	1.06 (0.57-1.90, $p = 0.857$ )
Alcoholic Liver Disease	No	40 (22.0)	142 (78.0)	-	-
	Yes	52 (24.5)	160 (75.5)	0.87 (0.54-1.38, $p = 0.551$ )	0.70 (0.38-1.27, $p = 0.240$ )
Viral hepatitis	No	68 (26.0)	194 (74.0)	-	-
	Yes	24 (18.2)	108 (81.8)	1.58 (0.95-2.70, $p = 0.087$ )	0.92 (0.45-1.94, $p = 0.832$ )
Non-alcoholic fatty liver disease	No	69 (22.6)	236 (77.4)	-	-
	Yes	23 (25.8)	66 (74.2)	0.84 (0.49-1.47, $p = 0.528$ )	0.77 (0.40-1.51, $p = 0.445$ )
Other	No	69 (21.6)	250 (78.4)	-	-
	Yes	23 (30.7)	52 (69.3)	0.62 (0.36-1.10, $p = 0.098$ )	0.57 (0.27-1.18, $p = 0.123$ )
Centre	Edinburgh	38 (21.1)	142 (78.9)	-	-
	Glasgow	54 (25.2)	160 (74.8)	0.79 (0.49-1.27, $p = 0.336$ )	0.86 (0.52-1.40, $p = 0.540$ )

SD – Standard Deviation.



**Figure S1.** Kaplan-Meier for symptom transition method. **A** – 70 days, **B** – 140 days, **C** – 270 days, **D** – 1.57 years, **E** – 2.66 years.



**Figure S2.** – Kaplan-Meier plot by surveillance adherence, with adjustment for counterfactual method.