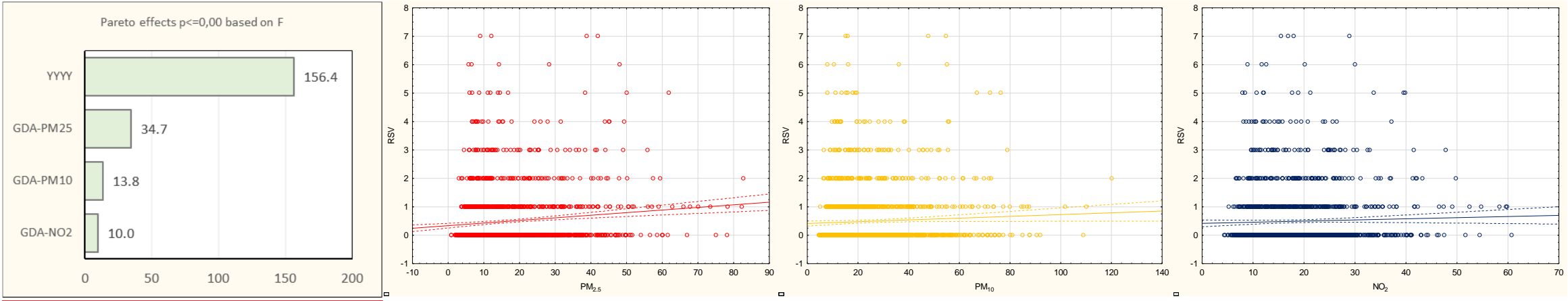
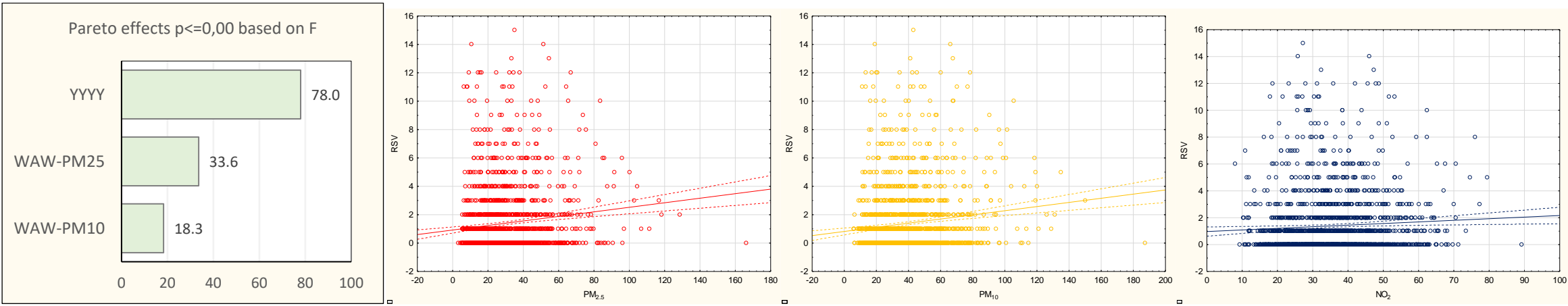


Supplementary materials 5. The Pareto charts of the effects power (based on the F statistics) and corresponding scatterplots of the air pollutants concentrations and the RSV hospitalizations (sequentially: $PM_{2.5}$, PM_{10} , NO_2) during the RSV high-risk seasons (2012-2019) in selected study sites (the statistical significance is shown on the Pareto chart, air pollutant that were statistically insignificant are not shown in the Pareto chart, but a scatterplot is shown); a) Gdansk, b) Warsaw, c) Krakow, d) Lodz, e) Wroclaw, f) Szczecin, g) Walbrzych

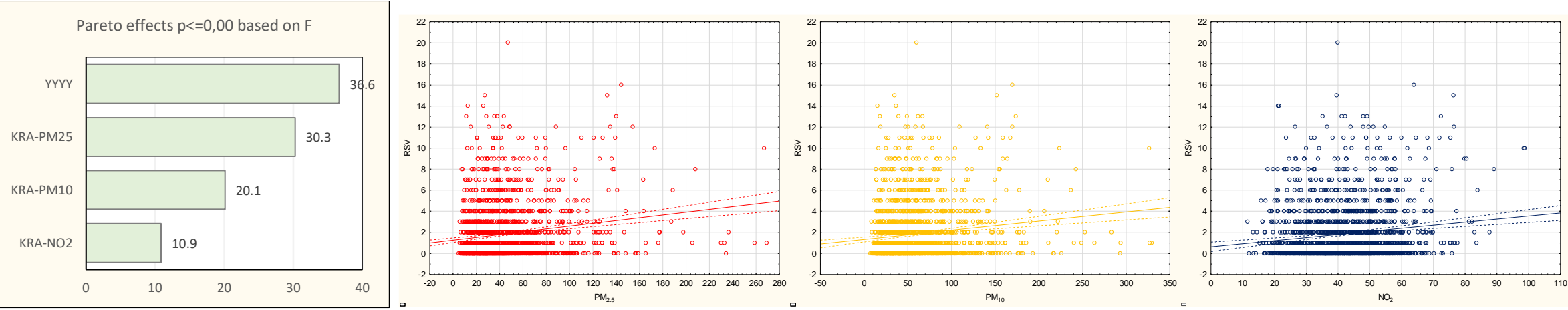
A) Gdansk



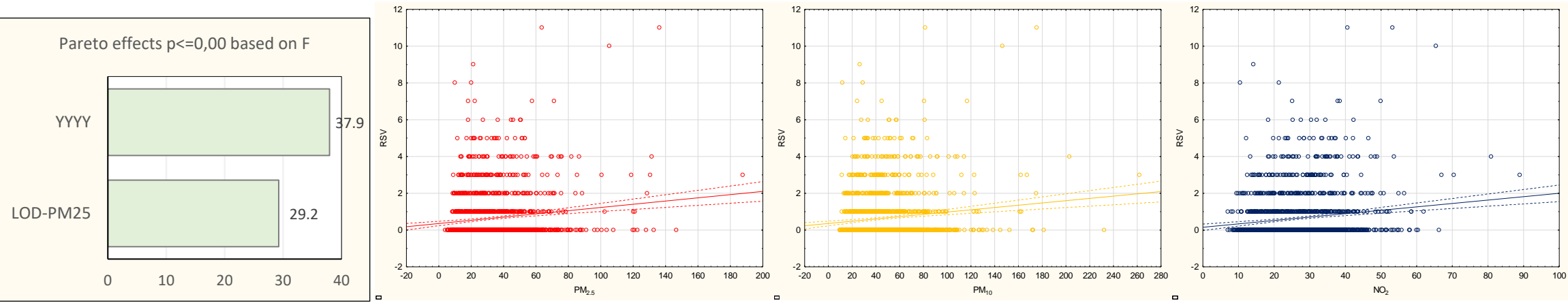
B) Warsaw



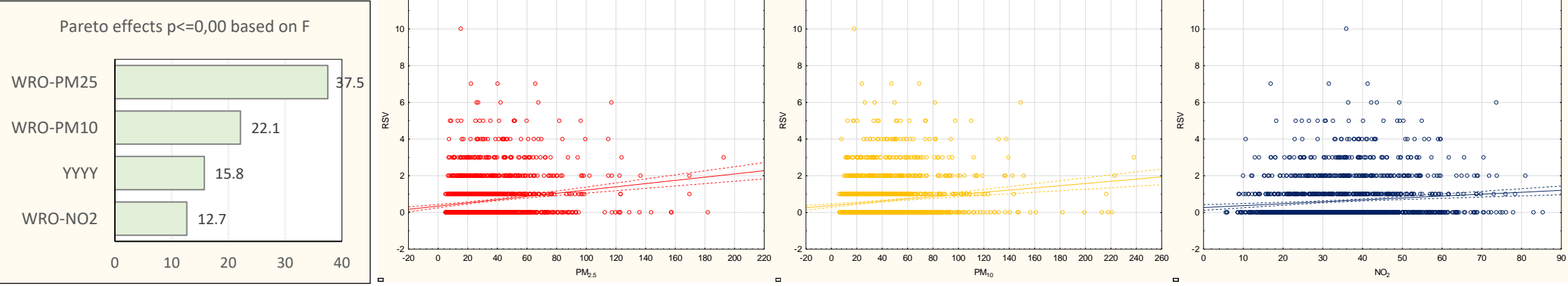
C) Krakow



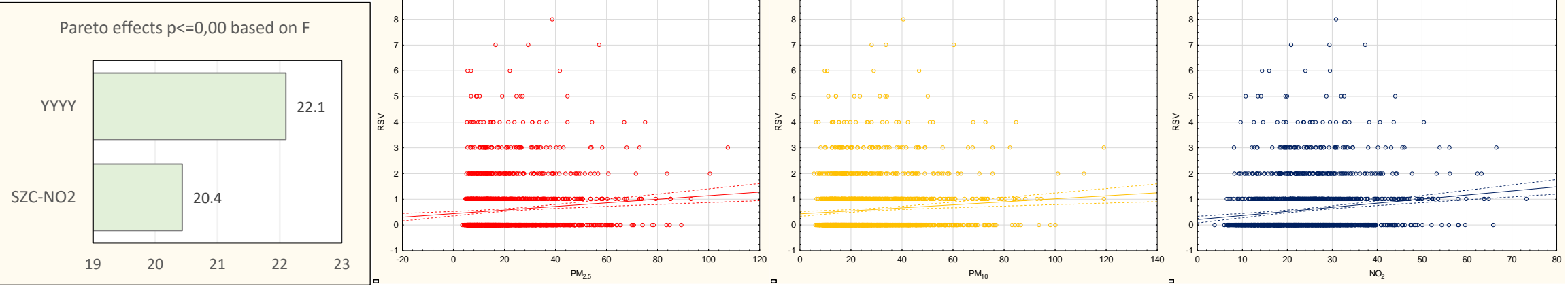
D) Lodz



E) Wroclaw



F) Szczecin



G) Walbrzych

