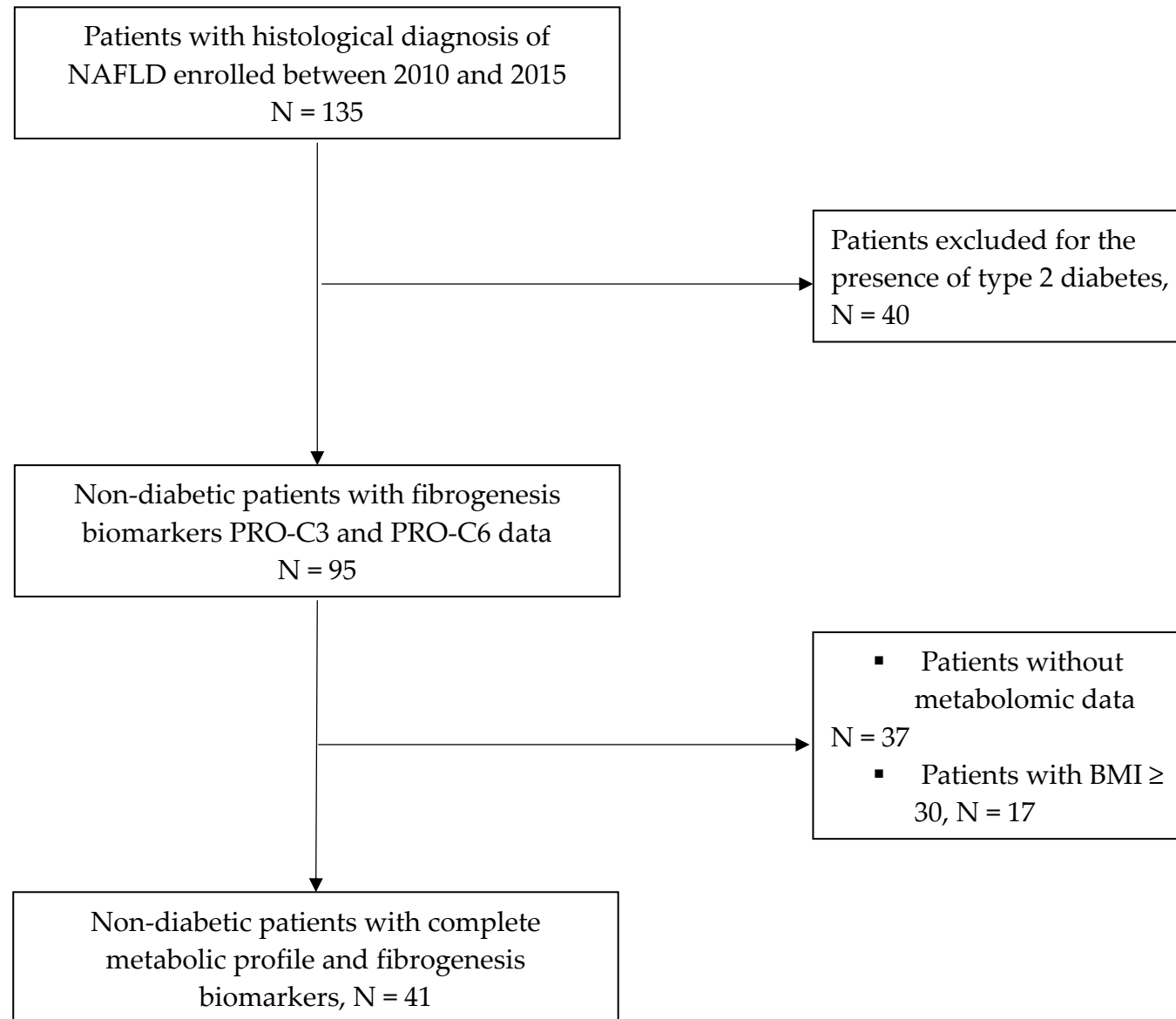


**Supplementary Figure S1.** Flow chart of the study.



**Supplementary Table S1.** Correlations between irisin, PRO-C3 and PRO-C6 with the histological features of NASH.

		<b>Irisin (ng/ml)</b>	<b>PRO-C3 (ng/ml)</b>	<b>PRO-C6 (ng/ml)</b>	<b>Ballooning</b>	<b>Lobular inflammation</b>	<b>Steatosis</b>	<b>NAS</b>
<b>Irisin (ng/ml)</b>	rs		0.466	0.462	-0.205	-0.003	-0.169	-0.142
	P value		0.0037	0.004	0.2056	0.9844	0.296	0.3832
<b>PRO-C3 (ng/ml)</b>	rs	0.466		0.875	0.263	0.149	0.311	0.291
	P value	0.0037		<0.0001	0.1101	0.3727	0.0574	0.0765
<b>PRO-C6 (ng/ml)</b>	rs	0.462	0.875		0.113	0.132	0.305	0.211
	P value	0.004	<0.0001		0.4985	0.4289	0.0627	0.2033
<b>Ballooning</b>	rs	-0.205	0.263	0.113		0.265	0.257	0.642
	P value	0.2056	0.1101	0.4985		0.0944	0.1042	<0.0001
<b>Lobular inflammation</b>	rs	-0.003	0.149	0.132	0.265		0.226	0.762
	P value	0.9844	0.3727	0.4289	0.0944		0.1562	<0.0001
<b>Steatosis</b>	rs	-0.169	0.311	0.305	0.257	0.226		0.644
	P value	0.296	0.0574	0.0627	0.1042	0.1562		<0.0001
<b>NAS</b>	rs	-0.142	0.291	0.211	0.642	0.762	0.644	
	P value	0.3832	0.0765	0.2033	<0.0001	<0.0001	<0.0001	

Abbreviations: NAS: Non-Alcoholic Fatty Liver Disease (NAFLD) Activity Score; PRO-C3, N-terminal type III collagen propeptide; PRO-C6, propeptide of type VI collagen.