

Figure S1. PCR amplification patterns of the InDel markers that could discriminate varieties in japonica rice. M: DL2000, DNA marker. Nipponbare was used as a control.

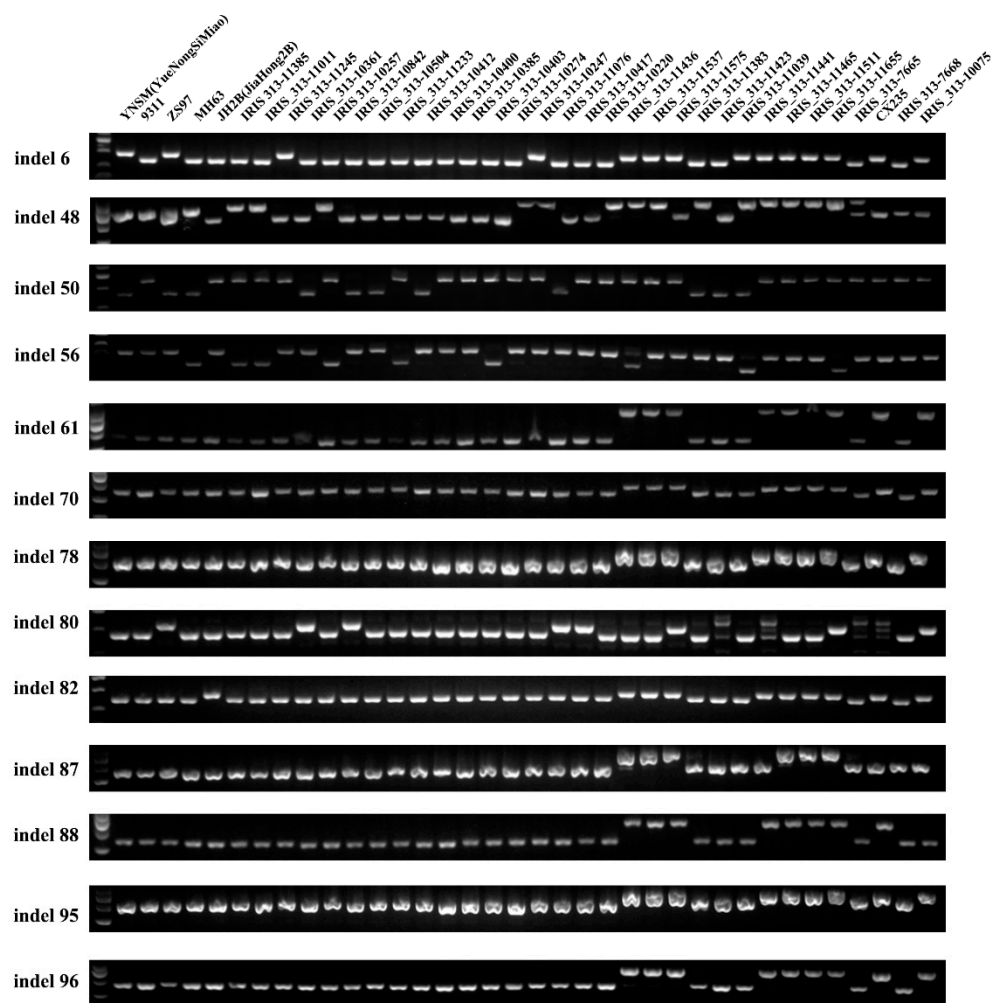


Figure S2. PCR amplification of 36 indica rice varieties using the 26 InDel markers. M: DL2000, DNA marker. YNSM(YueNongSiMiao) was used as a control.

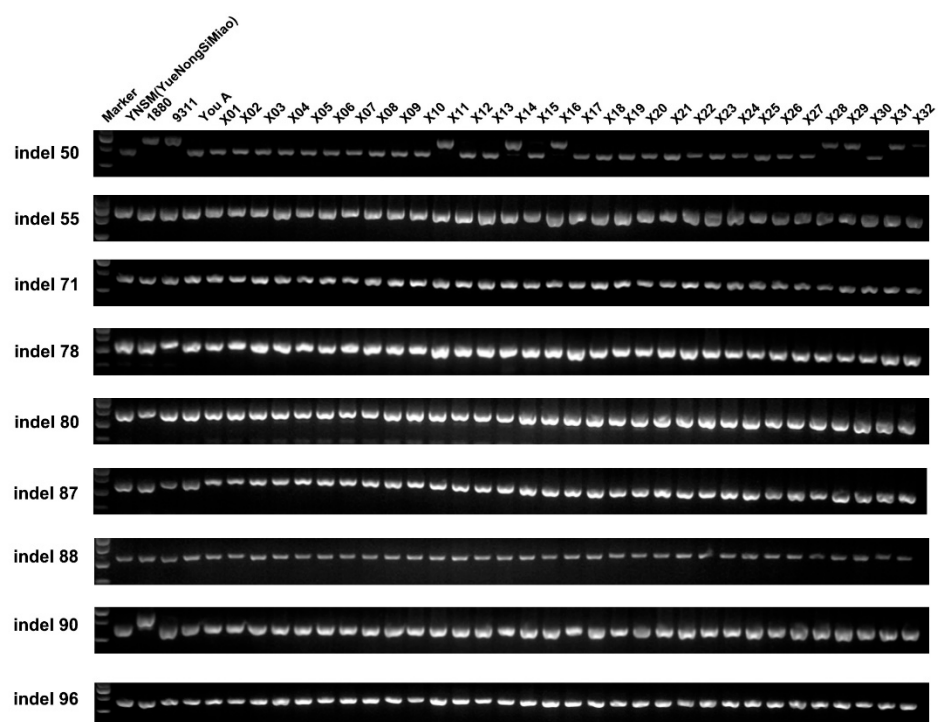


Figure S3. PCR amplification of the recombinant inbred lines (RILs) population. M: DL2000, DNA marker. YNSM(YueNongSiMiao) was used as a control.