

A Reappraisal of the Threshold Hypothesis of Creativity and Intelligence

Supplementary Material

Table S1

Descriptive Statistics for all Indicators

Dataset	Construct	Task	<i>N</i>	<i>Mean (SD)</i>
1	DT	Shoe	453	6.79 (3.26)
		Bottle	453	7.00 (2.87)
		Umbrella	453	6.71 (2.78)
	IQ	Numerical	451	9.39 (4.55)
		Verbal	454	14.72 (4.28)
		Retrieval	455	8.30 (3.76)
2	DT	SA	421	7.24 (2.07)
		NI	425	1.97 (0.67)
		IN	423	0.80 (0.36)
		FF	427	5.64 (1.59)
		CO	424	1.79 (0.35)
		RF	415	8.51 (2.16)
	IQ	Verbal and Figural	423	0.62 (0.15)

Note. Dataset 2: Fluency indicators are SA (similar attributes), IN (inventing names), FF

(figural fluency), and RF (retrieval fluency). CO (combining objects) and NI (nicknames) are

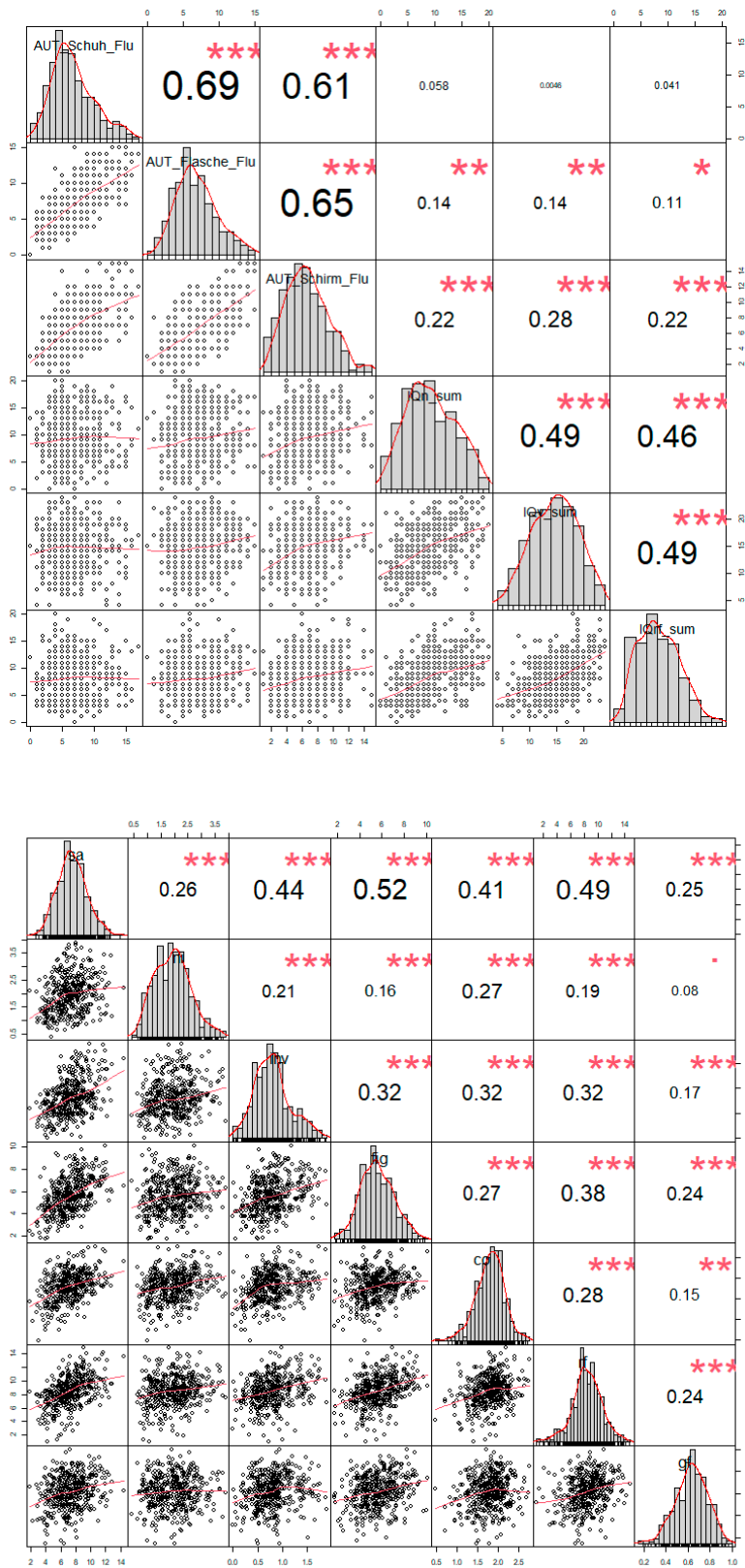
indicators of Originality that were only instructed for originality. Fluency indicators were

rated regarding the quantity of correct responses, originality was rated regarding the quality of

a single given response.

Figure S1

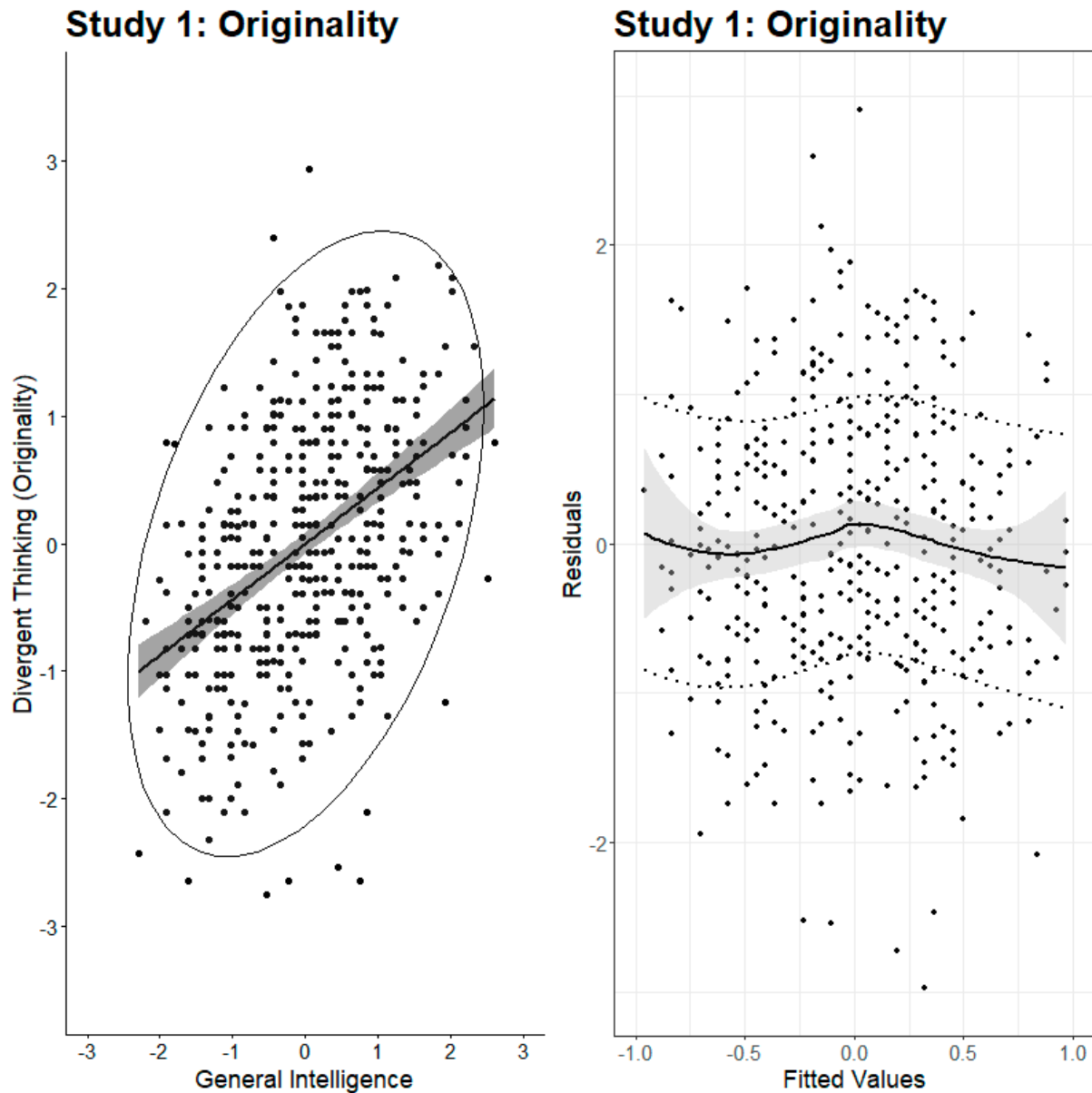
Correlations and Bivariate Scatterplots Between Manifest Scores



Note. Datasets 1 upper figure and 2 lower figure; * < .05; ** < .01; *** < .001.

Figure S2

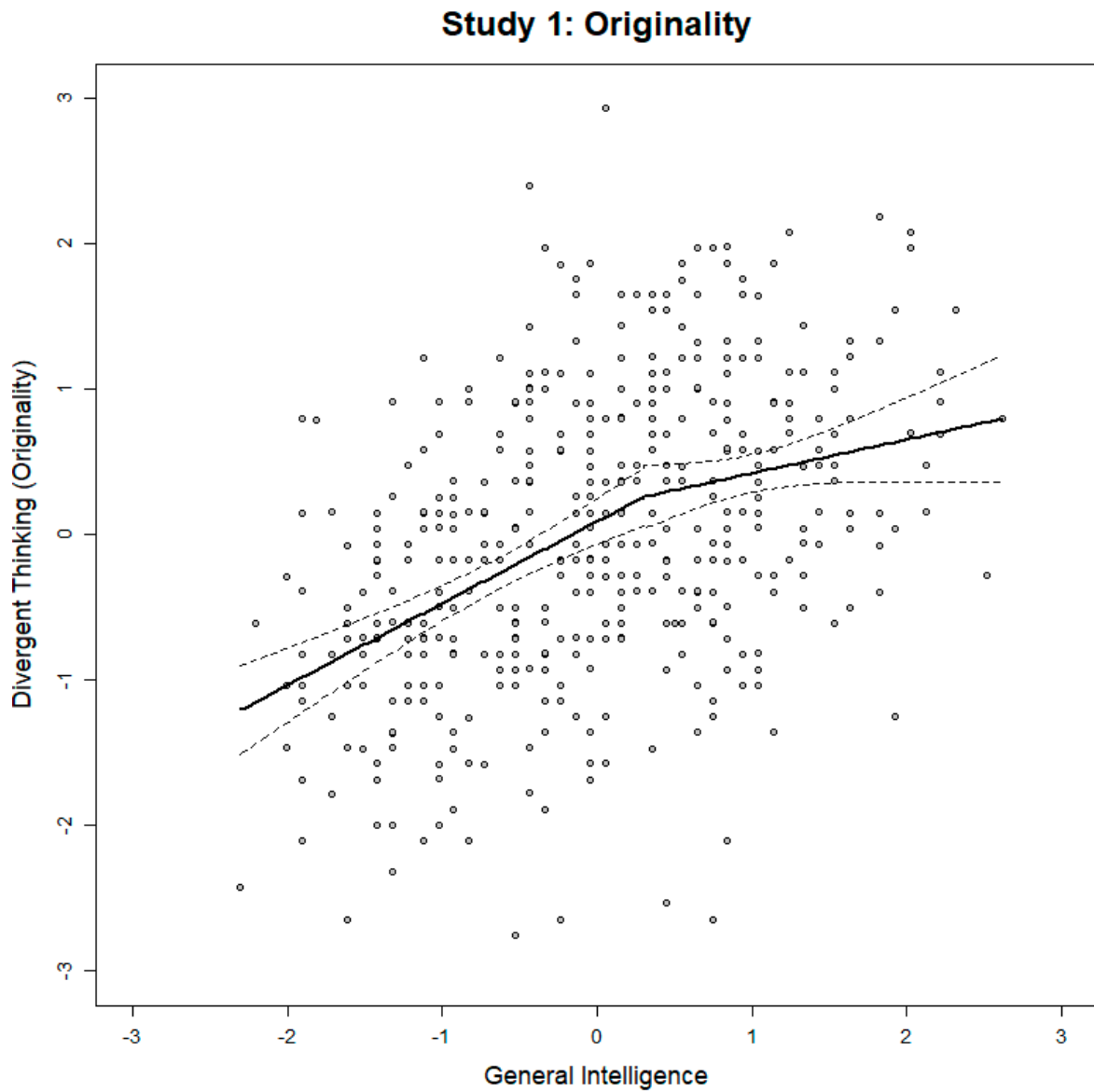
Scatterplot and Heteroscedasticity Plot in Study 1: Originality.



Note. Scatterplot (including a 0.95 confidence interval and an ellipse) for the correlation between divergent thinking and intelligence are presented upper plots. Heteroscedasticity plots (lower plots) include standard errors (grey) and standard deviations of the fitted values (dashed line).

Figure S3

Segmented Regression Analysis in Study 1: Originality.



Note. Breakpoint for the relation between general intelligence and divergent thinking. Dotted line = 95% CI.

Figure S4

Factor Variances at each Focal Point along the Intelligence Continuum in Study 1:

Originality.

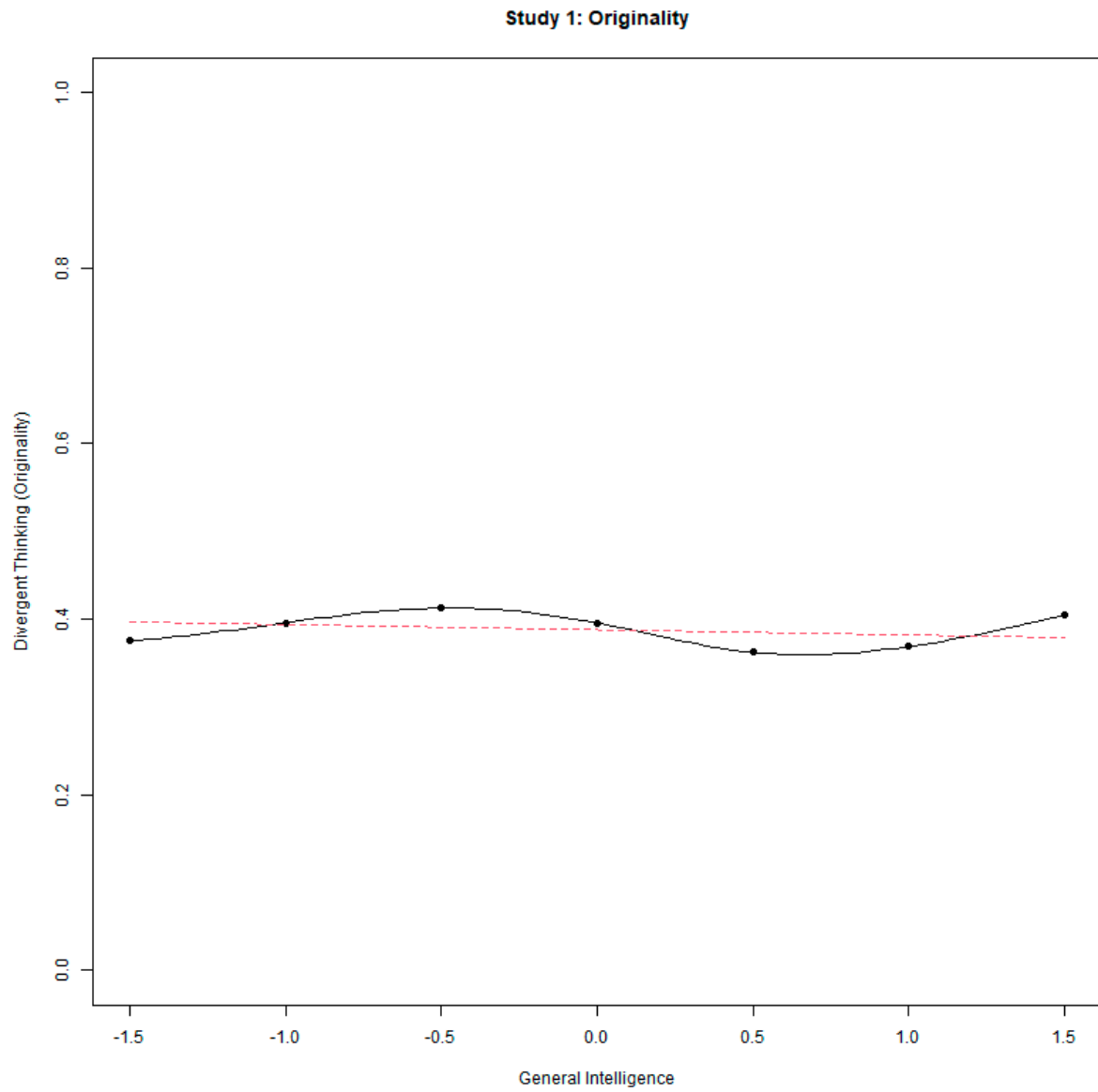
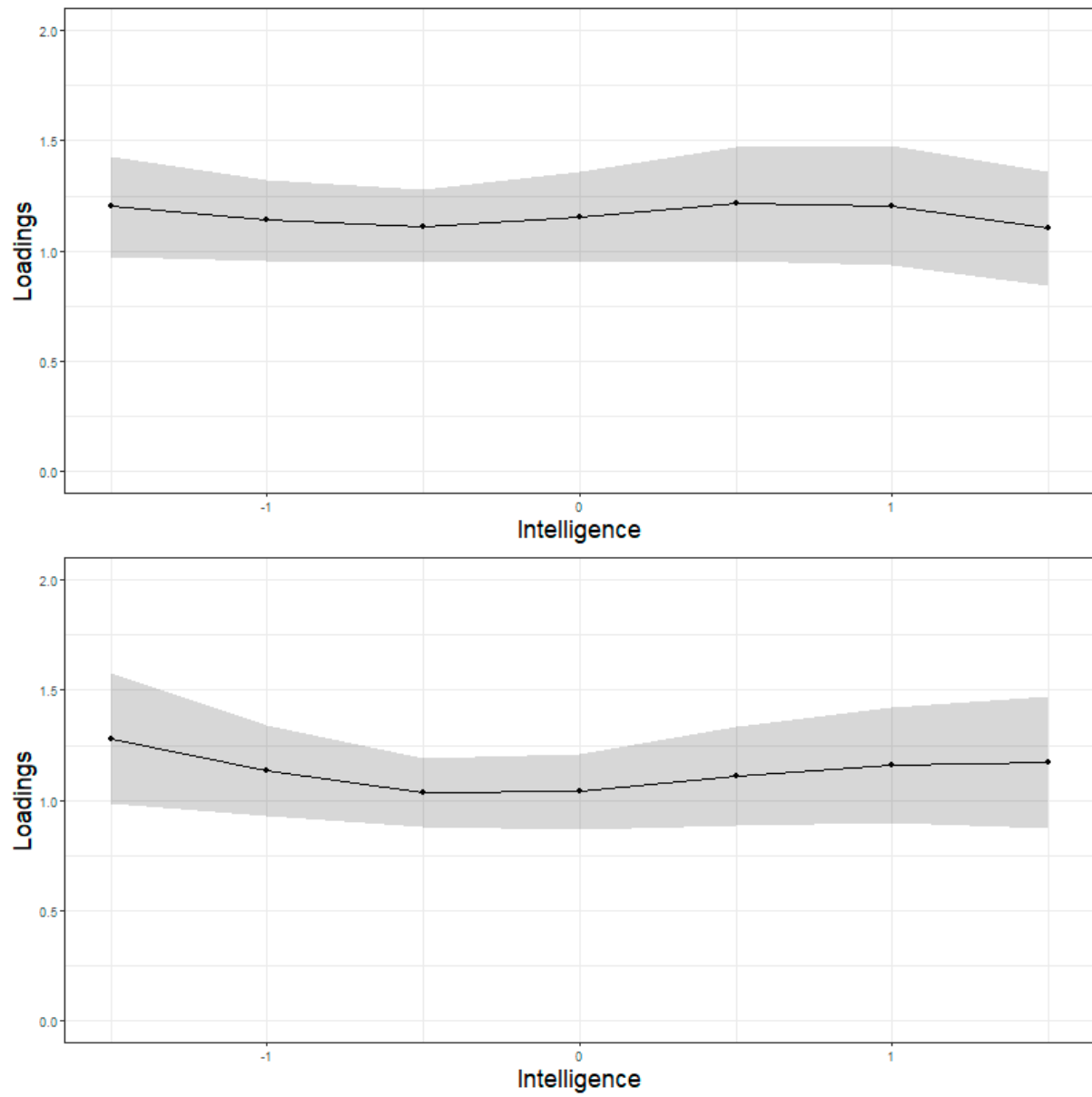


Figure S5

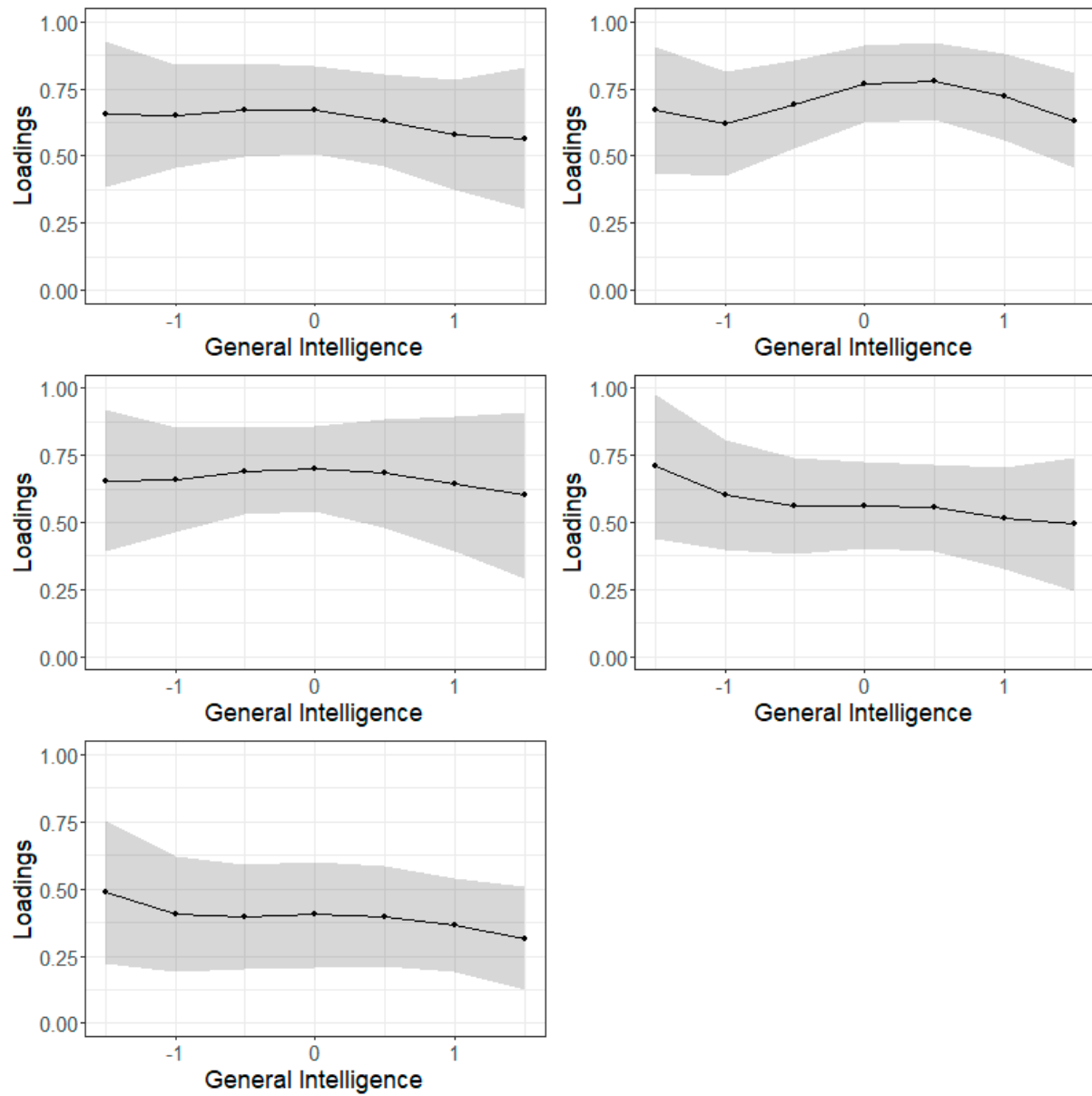
Loadings at the Focal Points in Dataset 1.



Note. Item 2 displayed in the upper figure and item 3 in the lower figure.

Figure S6

Loadings at the Focal Points in Dataset 2.



Note. From upper left: item 2, 3, 4, 5 and 6