

Supplementary File

Nanostructured Carbonated Hydroxyapatite Associated to rhBMP-2 Improves Bone Repair in Rat Calvaria

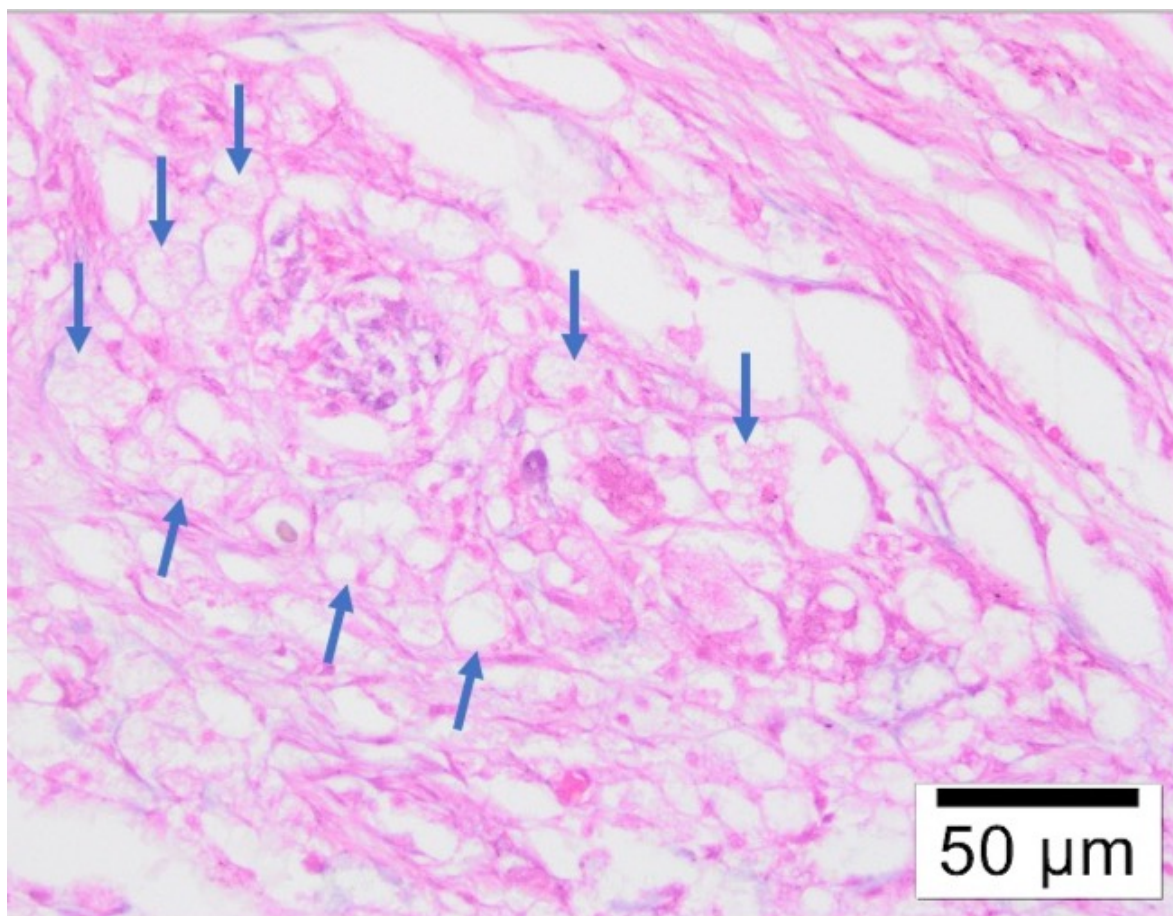


Figure S1. Photomicrograph representative of inflammatory infiltrate predominated by macrophages (blue arrows) of COL/rhBMP-2 group. Magnification: 40×; Stain: Hematoxylin and Eosin.