

PEI-Mediated Transient Transfection of High Five Cells at Bioreactor Scale for HIV-1 VLP Production

Eduard Puente-Massaguer, Florian Strobl, Reingard Grabherr, Gerald Striedner, Martí Lecina and Francesc Gòdia

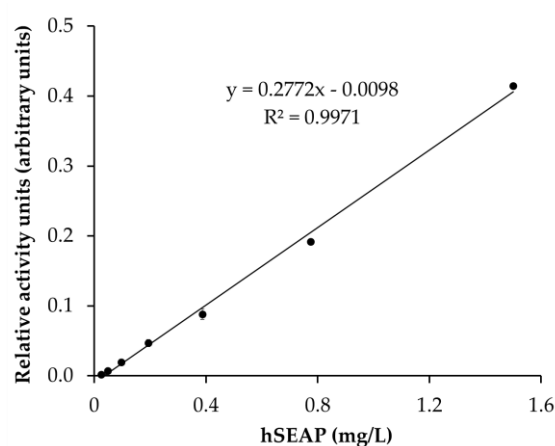


Figure S1. Linear relation between relative activity units (arbitrary units) and hSEAP concentrations (mg/L).

Table S1. Uptake and production rates of the main metabolites in parental High Five cells cultured at bioreactor scale. Cells were seeded at 1×10^6 cell/mL and cultured in 0.5 L of bioreactor volume. Rates are expressed in nmol/(10^6 cell·h).

Metabolite	Time (h)		
	0 – 24	24 – 48	48 – 72
Glucose	-118.5	-95.3	-55.4
Lactate	-17.8	-8.5	0.7
Aspartic acid	14.1	-17.3	-7.1
Glutamic acid	-37.0	-23.1	-7.6
Asparagine	-117.7	-19.7	-
Glutamine	-23.7	-30.0	-19.8
Alanine	161.6	86.9	41.3