



Supplementary Materials

Chemical Vapor Deposition of Uniform and Large-Domain Molybdenum Disulfide Crystals on Glass/ Al_2O_3 Substrates

Qingguo Gao ^{1,*}, Jie Lu ², Simin Chen ¹, Lvcheng Chen ¹, Zhequan Xu ¹, Dexi Lin ¹, Songyi Xu ¹, Ping Liu ¹, Xueao Zhang ², Weiwei Cai ² and Chongfu Zhang ^{1,3}

¹ School of Electronic Information, University of Electronic Science and Technology of China
Zhongshan Institute, Zhongshan 528402, China

² College of Physical Science and Technology, Xiamen University, Xiamen 361005, China

³ School of Information and Communication Engineering, University of Electronic Science and Technology of China, Chengdu 611731, China

* Correspondence: gqgemw@163.com

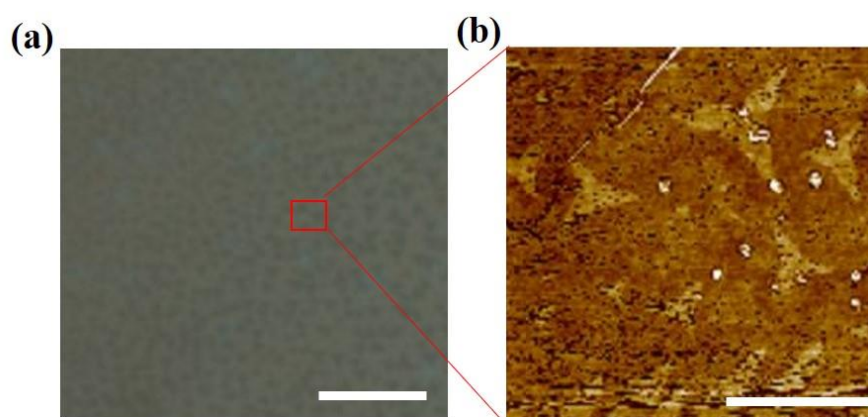


Figure S1. (a) Optical microscope images of the MoS₂ domains synthesised on the center region of glass/Mo substrates. The scale bar is 5 μm . (b) AFM image of the CVD growth MoS₂ on glass/Mo substrates. The scale bar is 1 μm .