

Supplementary Materials

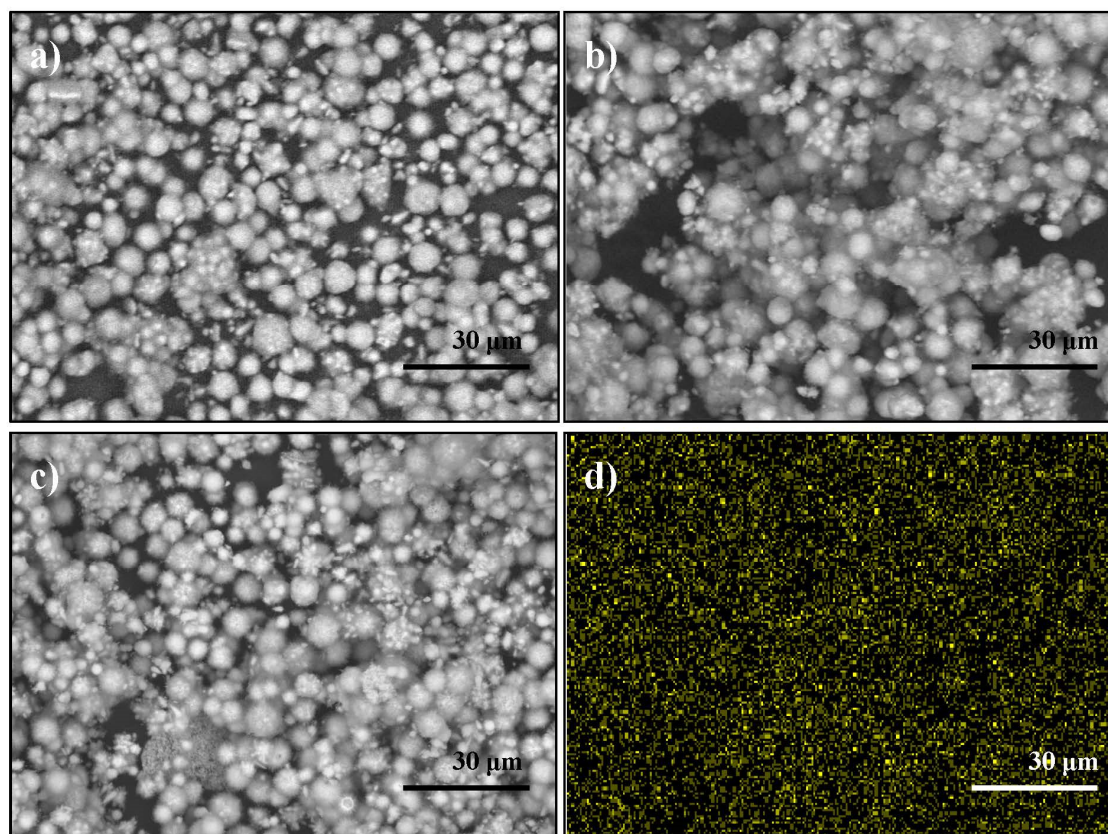


Figure S1. Scanning electron microscopy (SEM) images of (a) hydrothermal (M_hydro), (b) calcined (M_500) and (c) silver-doped (M_hydro_1.0%Ag) samples, (d) Energy dispersive X-ray (EDX) mapping of M_hydro_1.0%Ag powder.

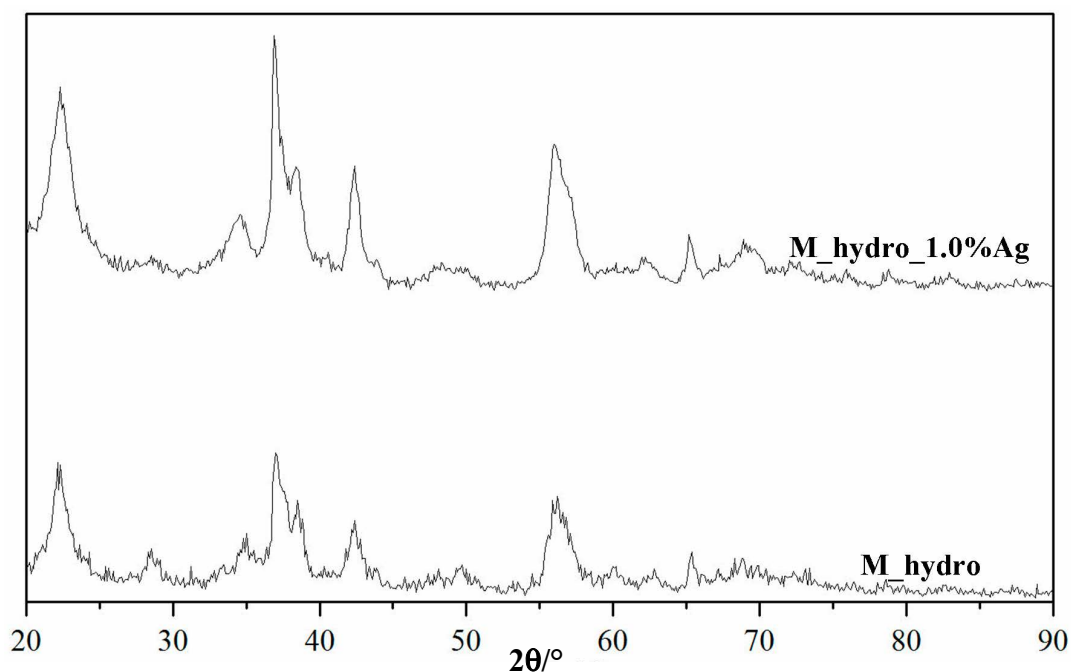


Figure S2. Comparison between X-ray powder diffraction (XRPD) patterns of pure (M_hydro) and Ag-doped MnO₂ (M_hydro_1.0%Ag) samples.

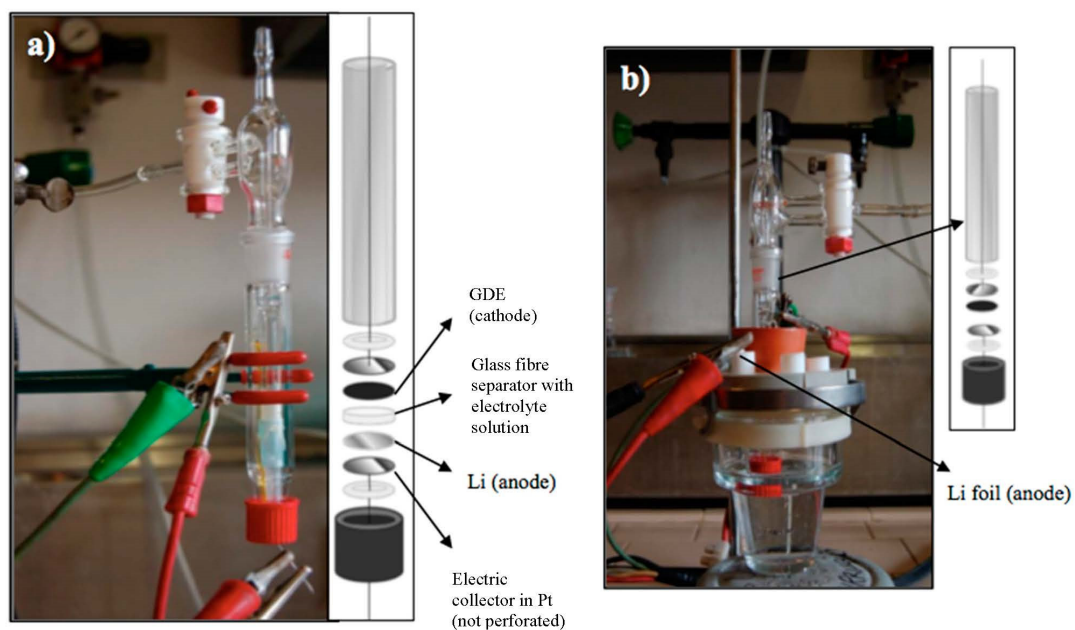


Figure S3. Cell configurations used for the electrochemical tests: (a) a Swagelok™-type cell (S-cell) and (b) a home-made cell (H-cell).



© 2016 by the authors; licensee MDPI, Basel, Switzerland. This article is an open access article distributed under the terms and conditions of the Creative Commons by Attribution (CC-BY) license (<http://creativecommons.org/licenses/by/4.0/>).