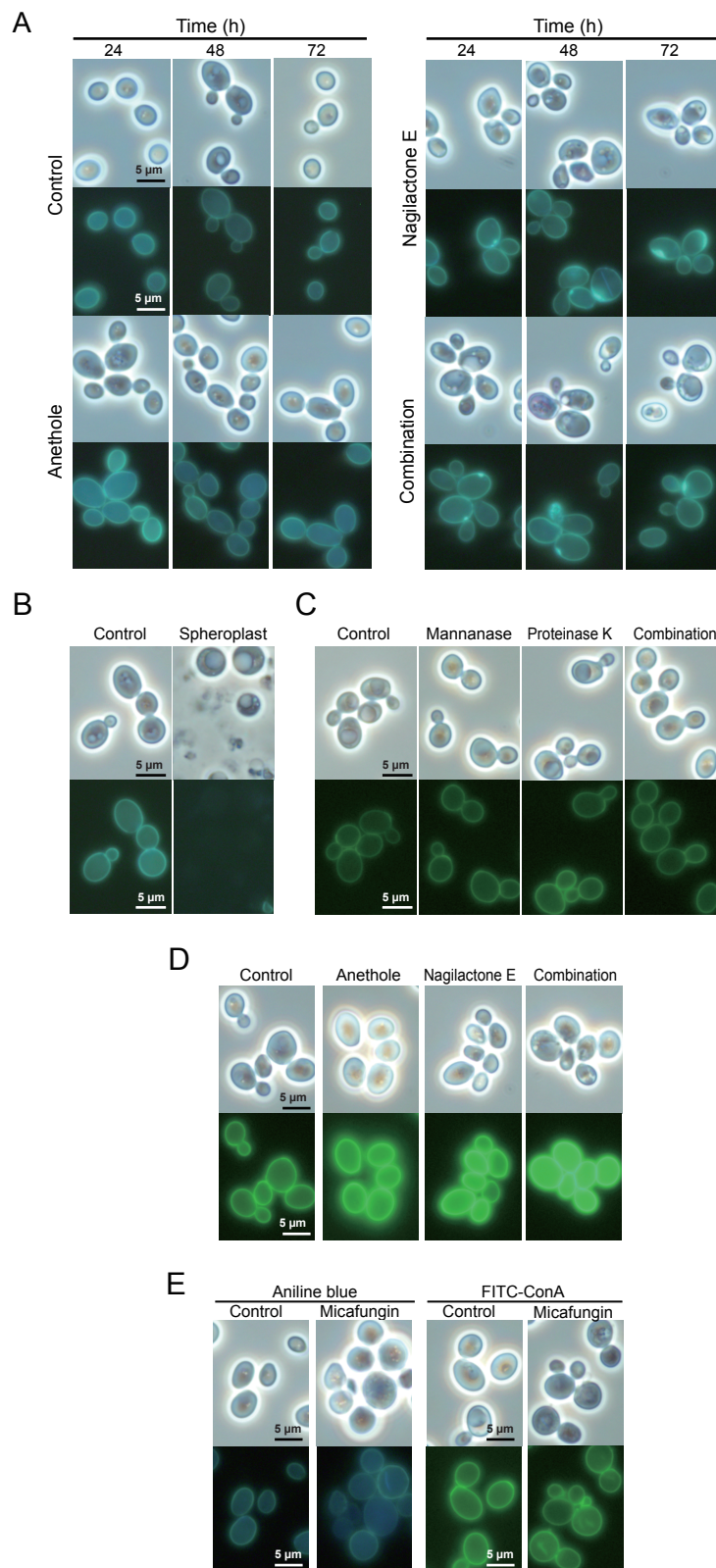


Supplementary Figure S1.

Phase-contrast and fluorescent micrographs of cells expressing Pdr5p tagged with green fluorescent protein. Exponentially growing cells were grown at 30°C in 2.5% ME treated with 312.5 μ M anethole, 250 μ M nagilactone E, or their combination for 72 h. Control denotes treatment without drugs.



Supplementary Figure S2.

Visualization of β -glucan and mannan in yeast cells stained with aniline blue and FITC-ConA, respectively.

(A) Exponentially growing cells were grown at 30 °C in 2.5% ME treated with 312.5 μ M anethole, 250 μ M nagilactone E, or their combination. Control denotes treatment without drugs. A portion of cells were withdrawn at the indicated incubation time and then stained with aniline blue. (B) Exponentially growing cells were treated with or without zymolyase 20T at 30 °C for 30 min, and were then stained with aniline blue. (C) Exponentially growing cells were treated with mannanase and/or proteinase K. Control denotes treatment without enzymes. The cells were then stained with FITC-ConA. (D) Exponentially growing cells were grown at 30 °C for 72 h in 2.5% ME treated with 312.5 μ M anethole, 250 μ M nagilactone E, or their combination. Control denotes treatment without drugs, prior to staining with FITC-ConA. (E) Exponentially growing cells were grown at 30 °C for 72 h in 2.5% ME treated with 0.4 μ M micafungin at 30 °C for 48 h, prior to staining with aniline blue or FITC-ConA.