

Figure S1. IS adsorption capacity of zeolite 7H240 at the different times ($n = 3$).

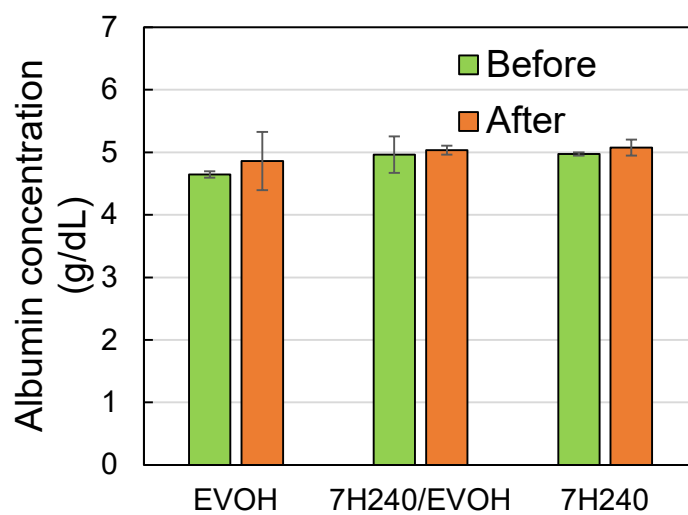


Figure S2. Albumin concentrations before and after an adsorption test at 37 °C for 24 h ($n = 3$).

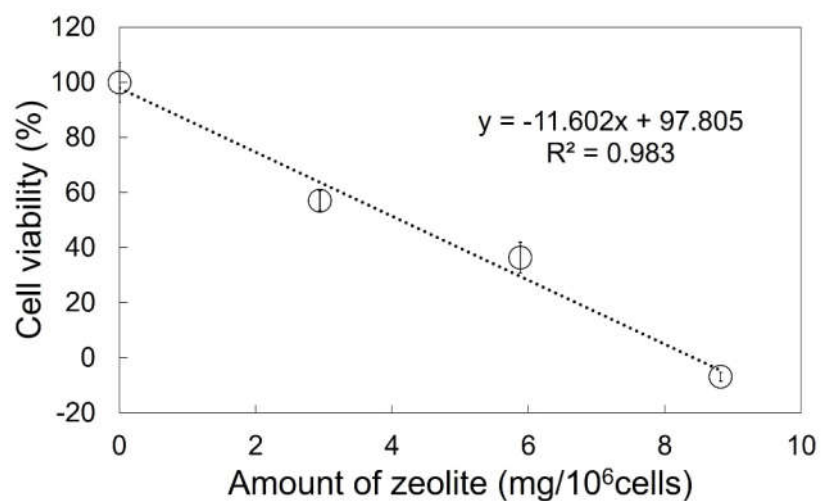


Figure S3. Cytotoxicity of zeolite 7H240 powder in Raw 264.7 cells after incubation at 37 °C for 24 h ($n = 6$).

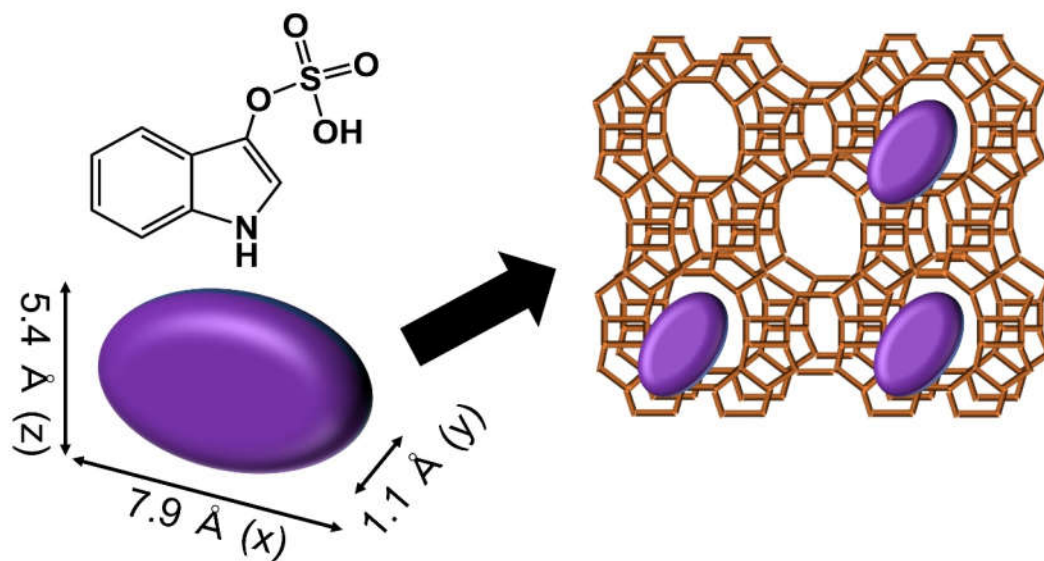


Figure S4. Schematic image of IS adsorption in zeolite.