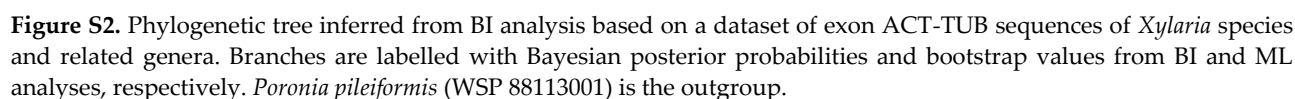
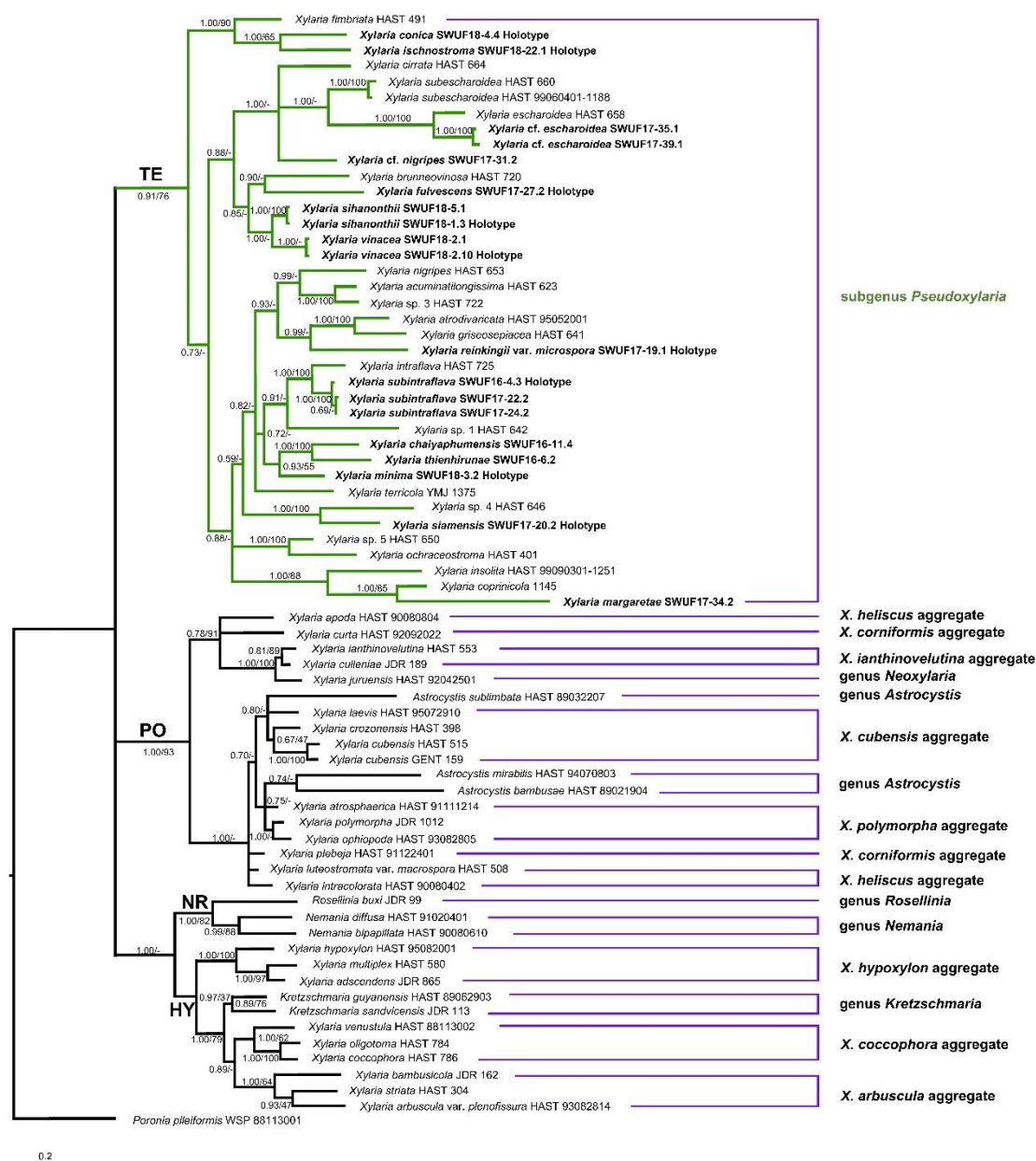
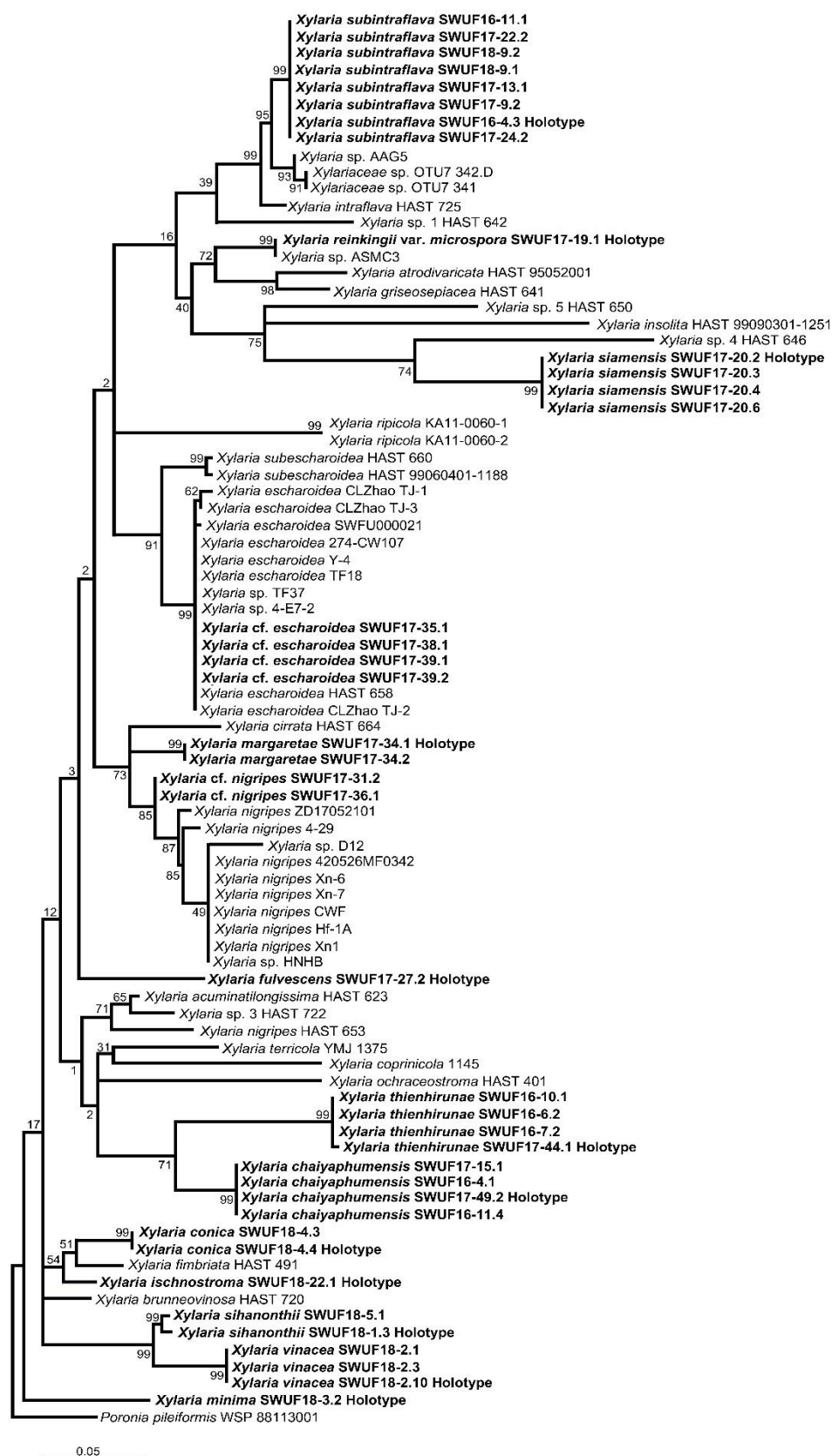


**Figure S1.** Phylogenetic tree inferred from ML analysis based on a dataset of ACT-TUB sequences of *Xylaria* species associated with termite nests. Branches are labelled with likelihood bootstrap support 1000 replications. *Poronia pileiformis* (WSP 88113001) is the outgroup.





**Figure S3.** Phylogenetic tree inferred from BI analysis based on a dataset of intron ACT-TUB sequences of *Xylaria* species and related genera. Branches are labelled with Bayesian posterior probabilities and bootstrap values from BI and ML analyses, respectively. *Poronia pileiformis* (WSP 88113001) is the outgroup.



**Figure S4.** Phylogenetic tree inferred from ML analysis based on a dataset of ITS sequences of *Xylaria* species associated with termite nests. Branches are labelled with likelihood bootstrap support 1000 replications. *Poronia pileiformis* (WSP 88113001) is the outgroup.