

Supplementary Materials

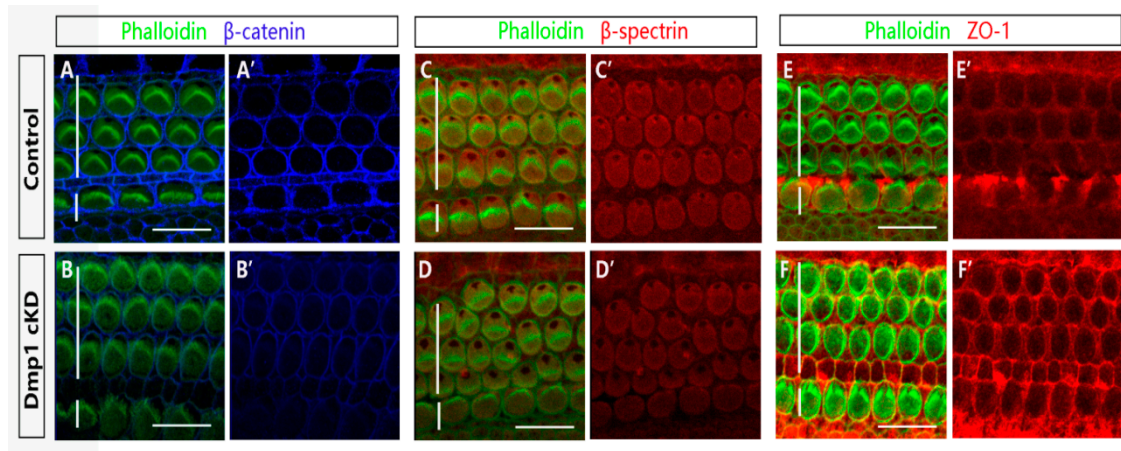


Figure S1. Catenin (A,B), β -spectrin (C,D) and ZO-1 (E,F) localization in the control and Dmp1 cKD OC at P1. Cytoskeleton and junctions were marked by phalloidin staining. The expression of these proteins was not significantly altered. Scale bars: 10 μ m.

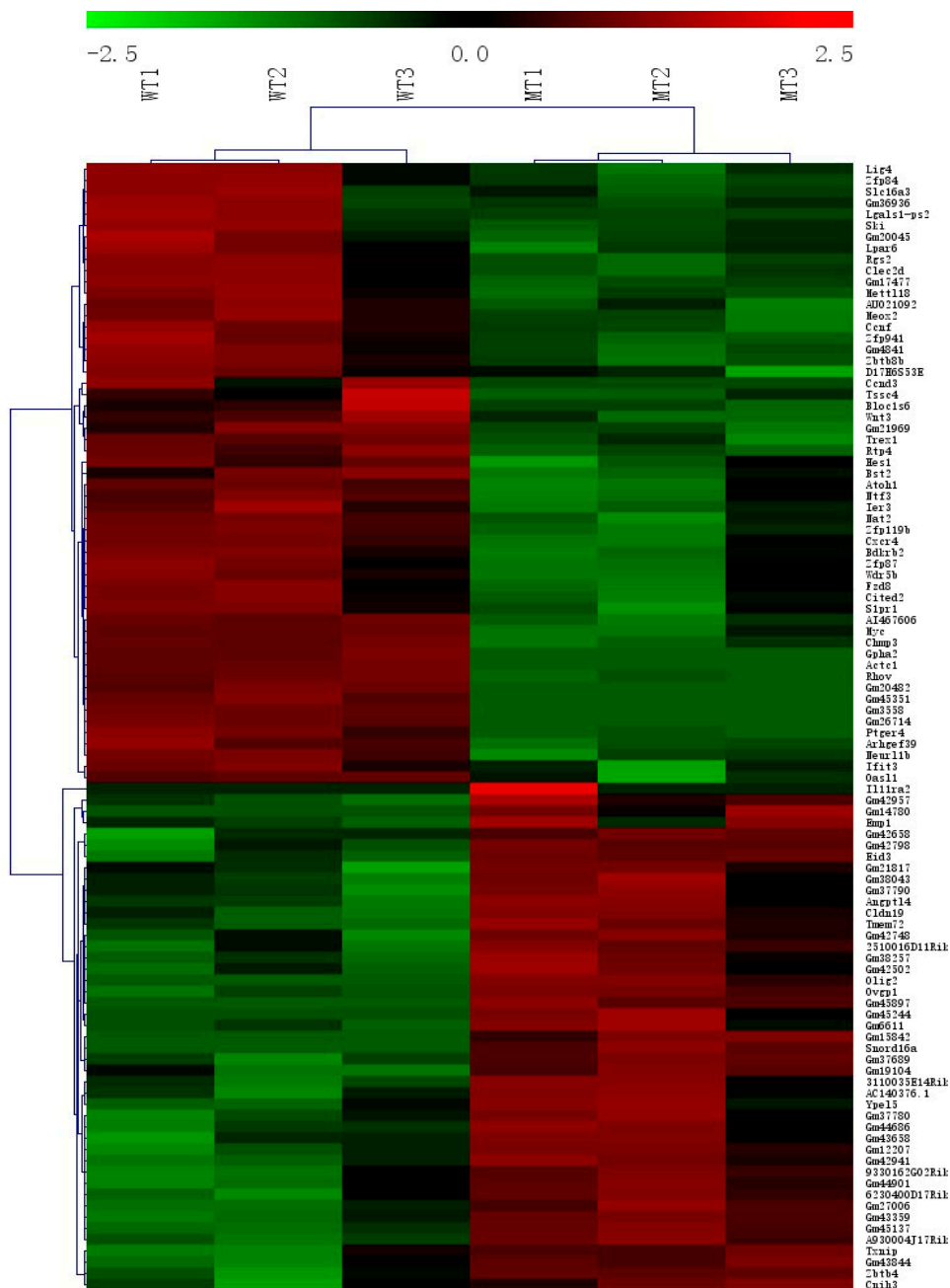


Figure S2. Heatmap generated by clustering 389 DEGs and 6 samples together.

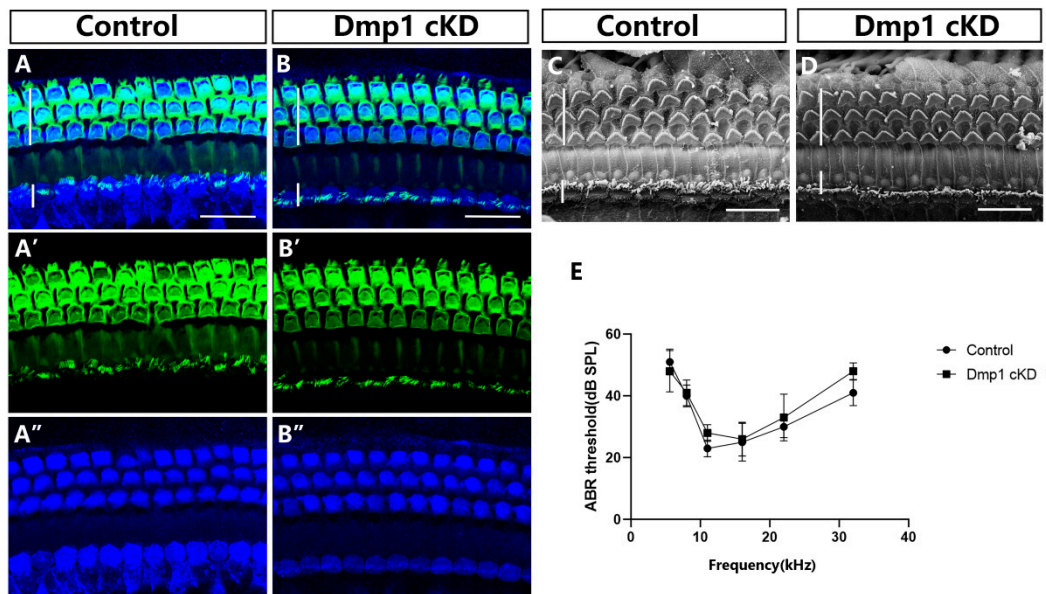


Figure S3. The normal hearing and normal hair cells in adult Dmp1 cKD mice. (A,B): Whole-mount images of adult cochlea from control and Dmp1 cKD mice. There was no loss of hair cells in Dmp1 cKD cochlea. (C,D): SEM images of adult cochlea from control and Dmp1 cKD mice. The hair bundles were normal. (E): ABR thresholds of 4-week-old Dmp1 cKD mice (n = 5) and controls (n = 6). No significant difference in hearing sensitivity was observed.