

Supplementary File 3: Images of 3D Printed Heart Models

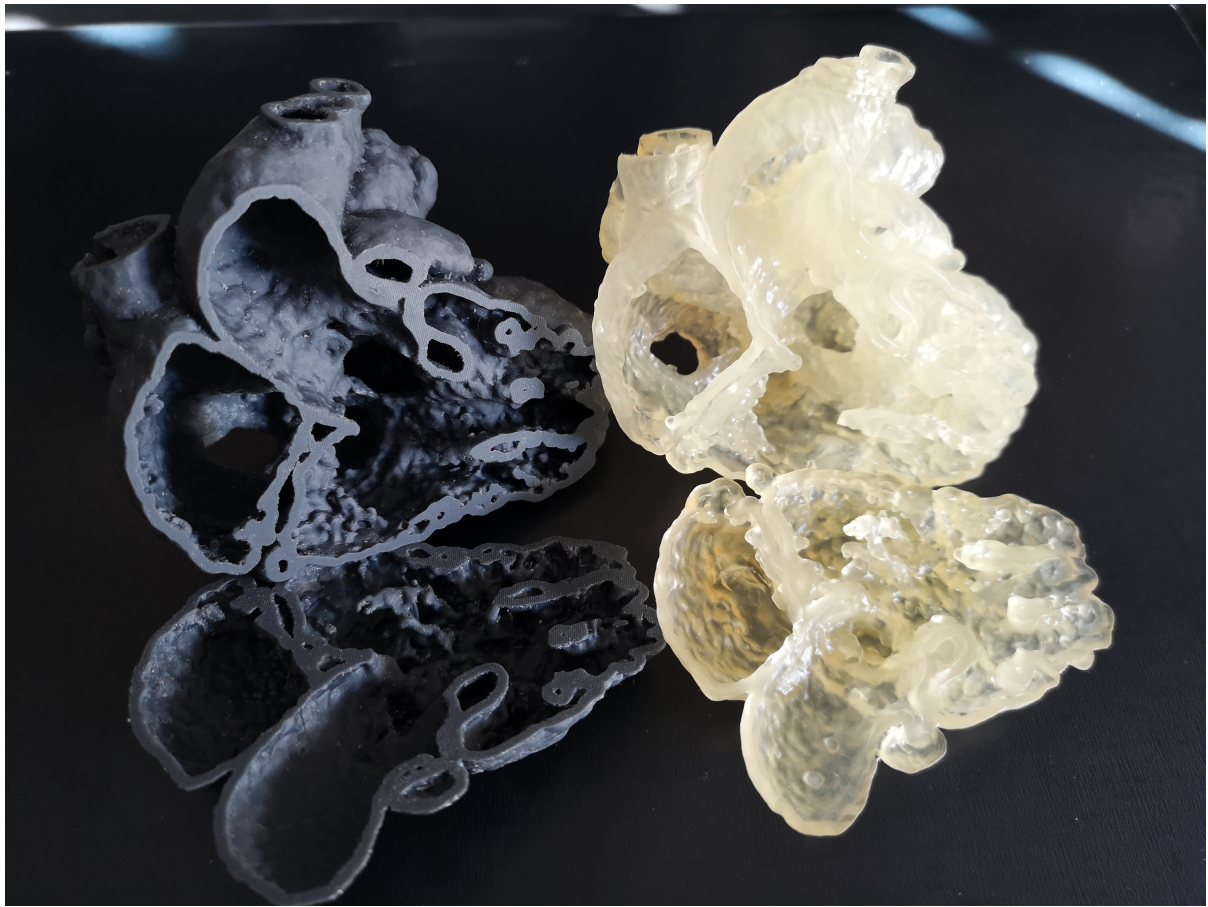


Figure 1: 3D printed heart models in two different materials, Flexible V4 Resin (gray) and TPU 80A (translucent).



Figure 2: 3D printed heart models of 4 different types of congenital heart disease. Starting from left: atrial septal defect, ventricular septal defect, Tetralogy of Fallot, double outlet right ventricle.