

Supplementary Material

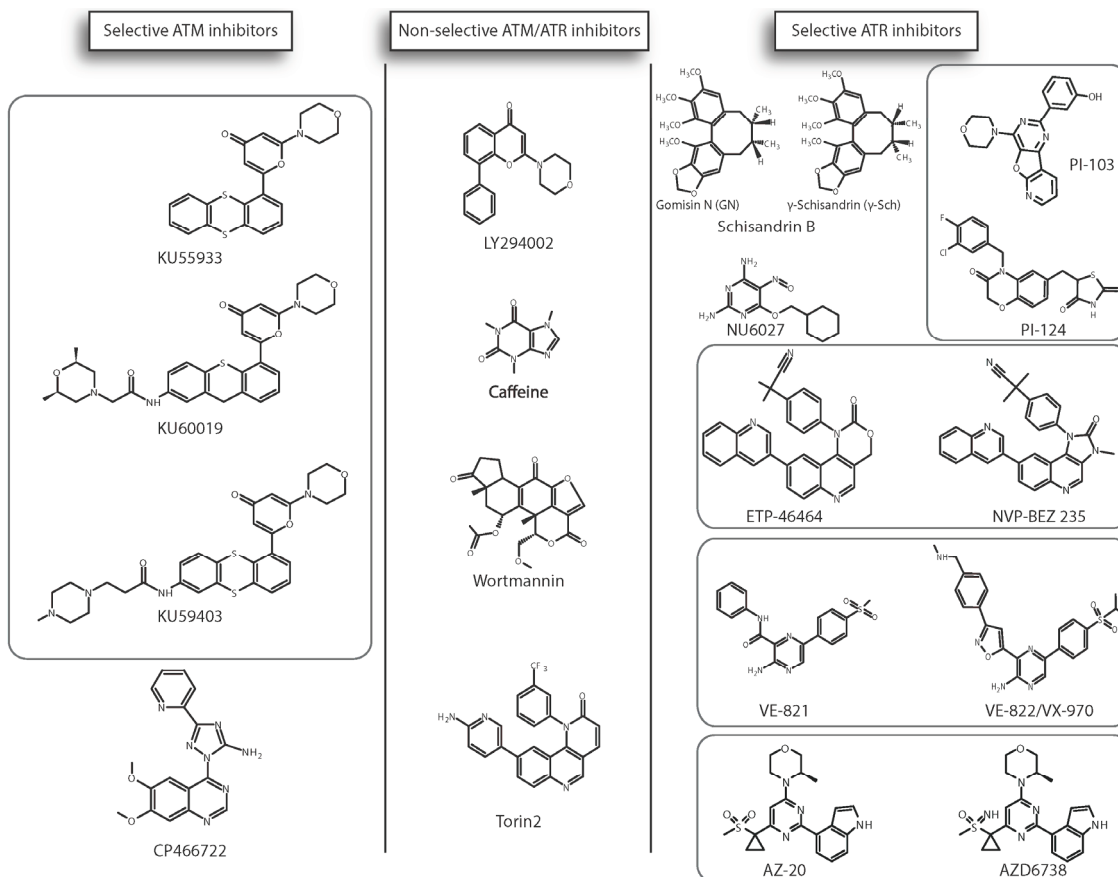


Figure S1. Selective ATM inhibitors (**left**), non-selective ATM/ATR inhibitors (**center**) and selective ATR inhibitors (**right**). Skeletal representation of the inhibitors. Grey boxes designate molecules sharing similarities.

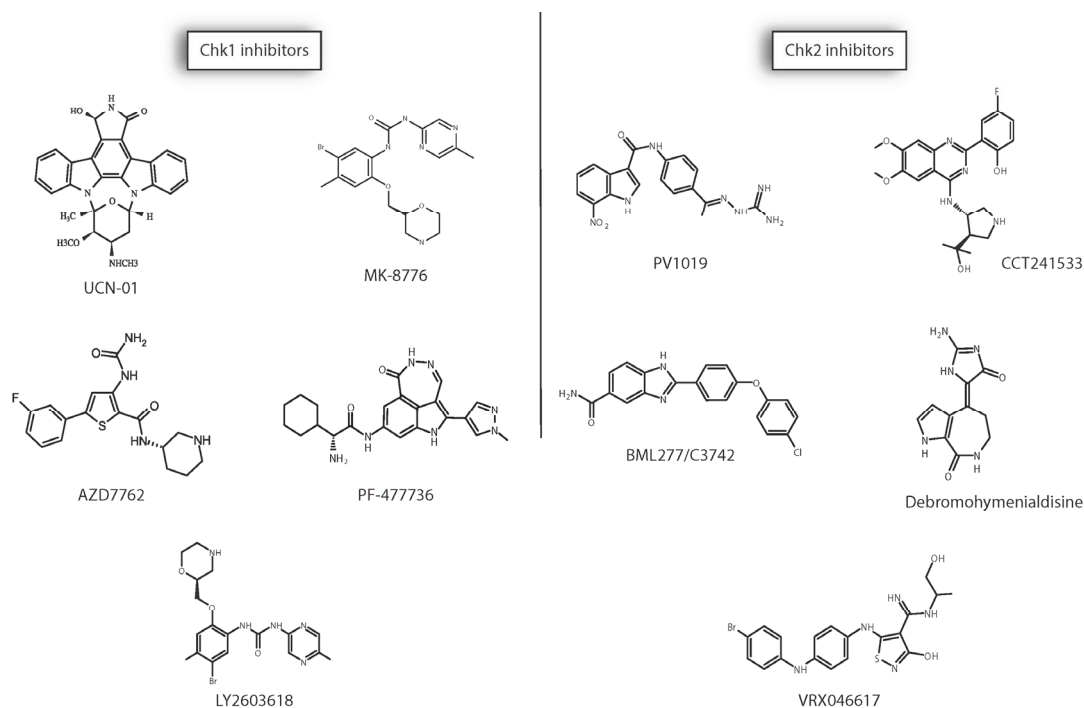


Figure S2. Chk1 inhibitors (**left**) and Chk2 inhibitors (**right**). Skeletal representation of inhibitors.

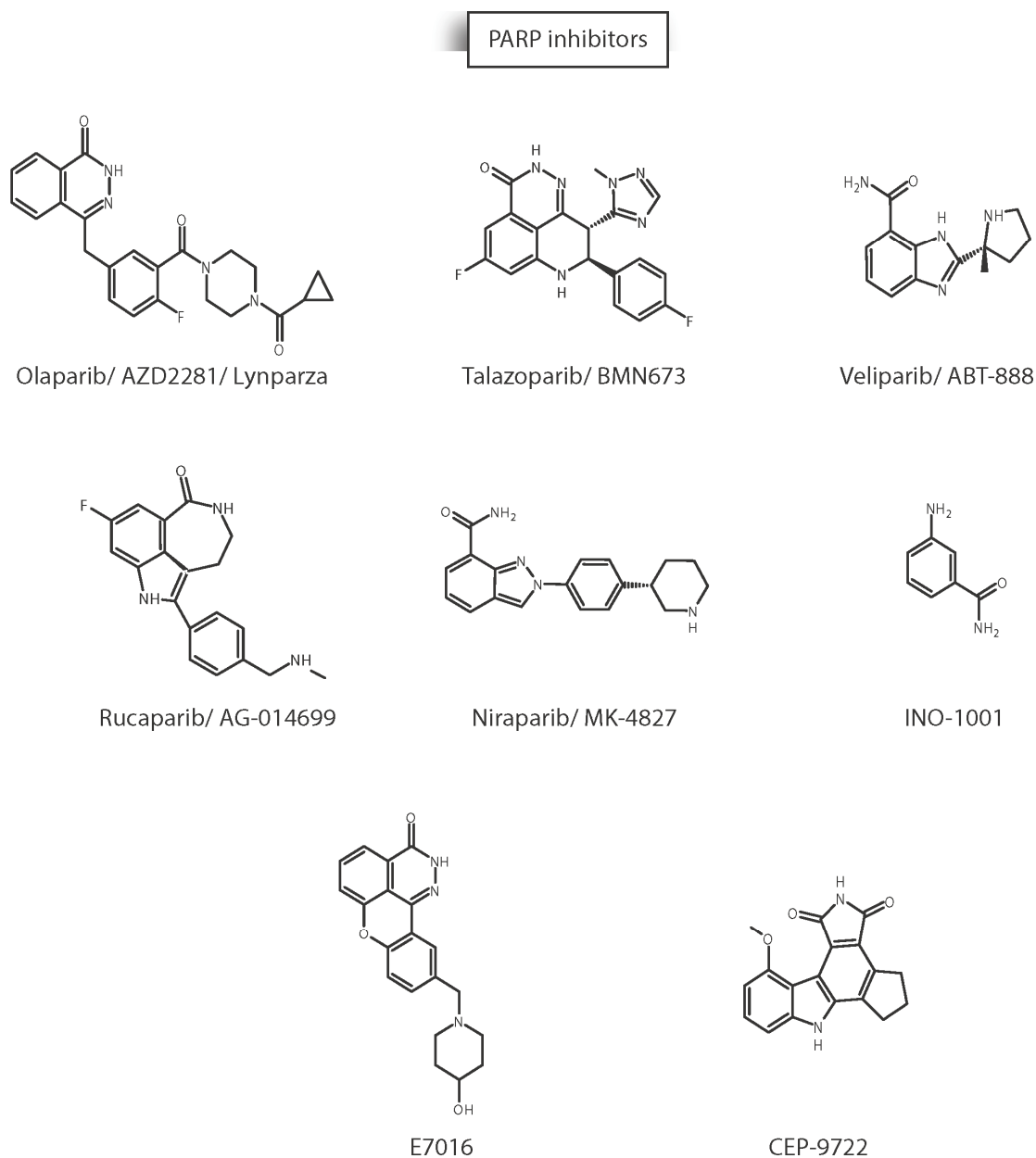


Figure S3. PARP inhibitors that have reached clinical evaluation.

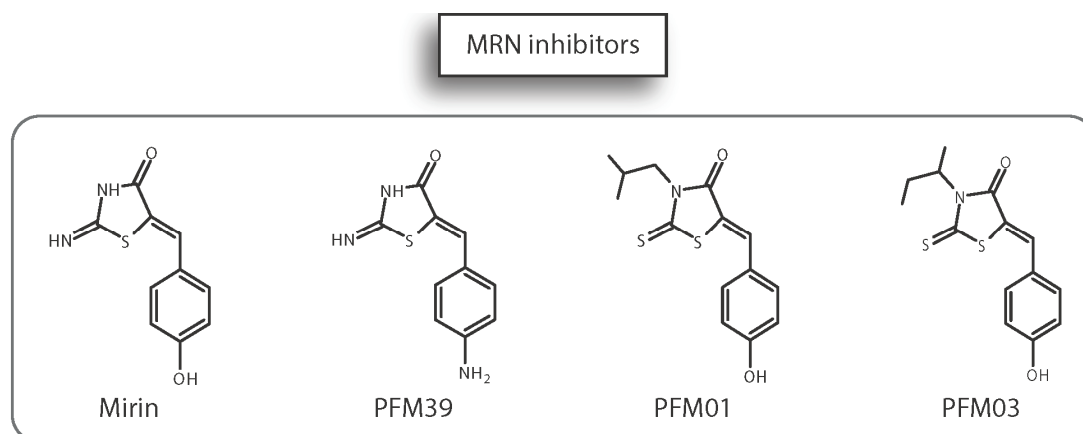
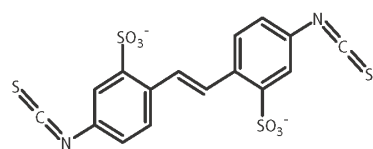


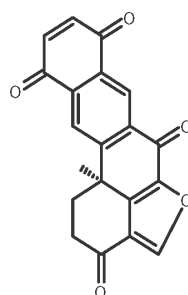
Figure S4. MRN (MRE11-RAD50-NBS1) complex inhibitors. Skeletal representation of inhibitors. The grey box designates molecules sharing similarities.

RAD51 inhibitors

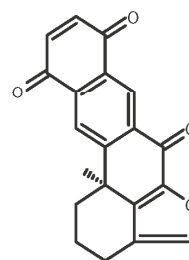
Velic, Couturier et al.



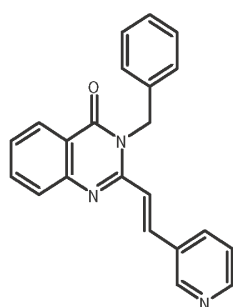
DIDS



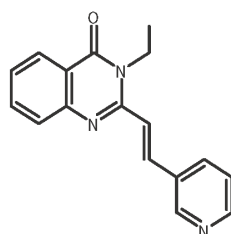
Halenaquinone



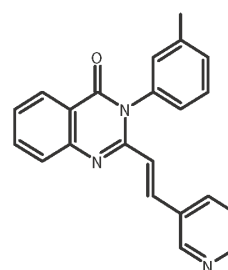
Xestoquinone



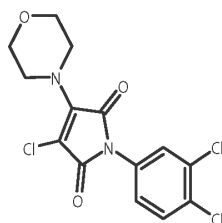
B02



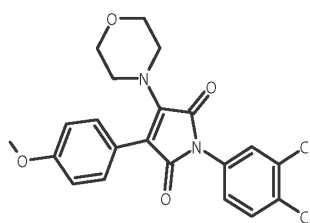
B02-3a



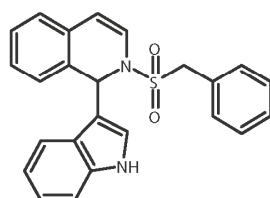
B02-3b



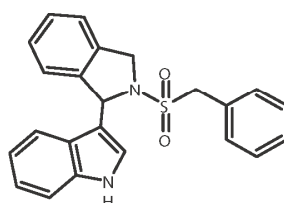
RI-1



RI-2



IBR2



IBR120

Figure S5. Skeletal representation of RAD51 inhibitors. Grey boxes designate molecules sharing similarities.

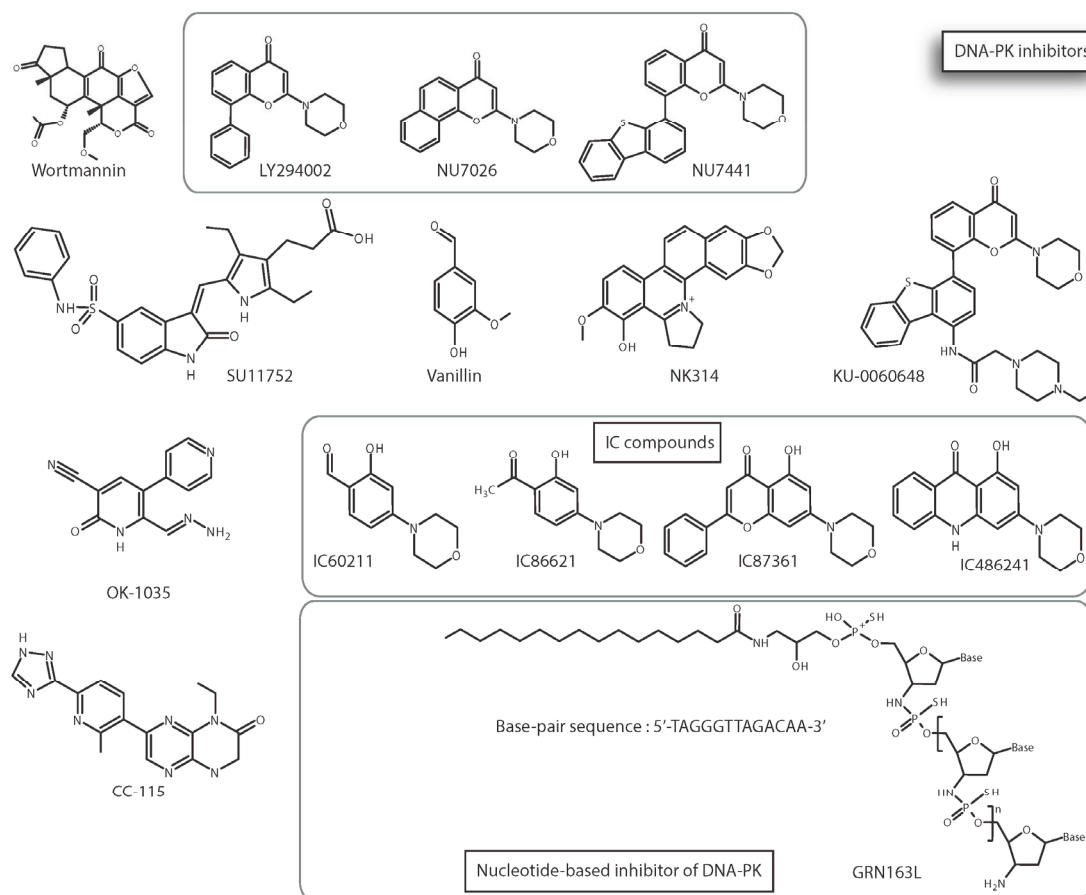


Figure S6. Skeletal representation of DNA-PK inhibitors. Grey boxes designate molecules sharing similarities.

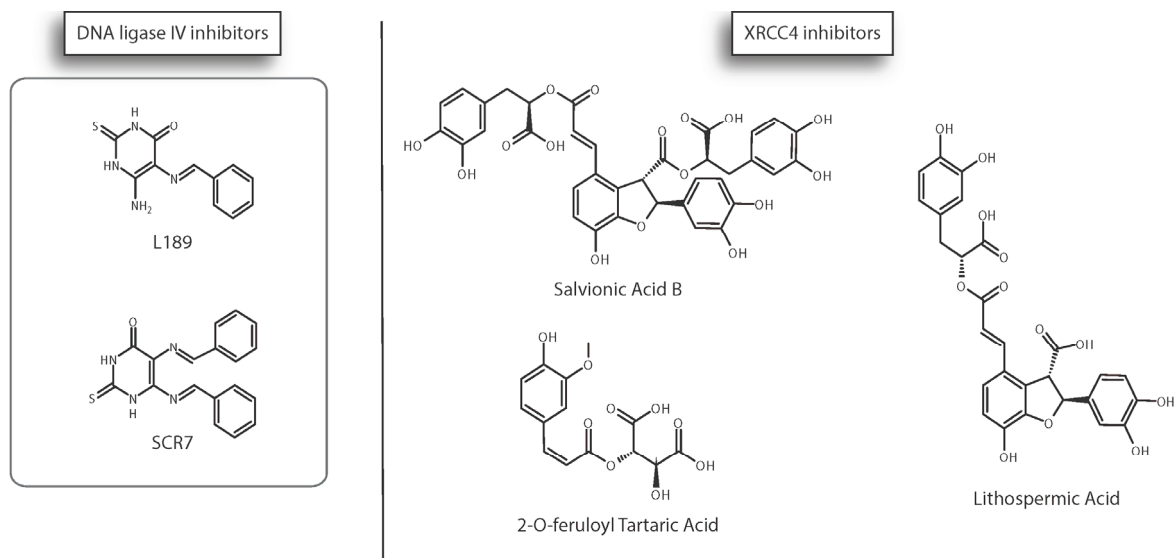


Figure S7. DNA ligase IV inhibitors (left) and XRCC4 inhibitors (right). Skeletal representation of inhibitors. Grey boxes designate molecules sharing similarities.