

Fig. S3

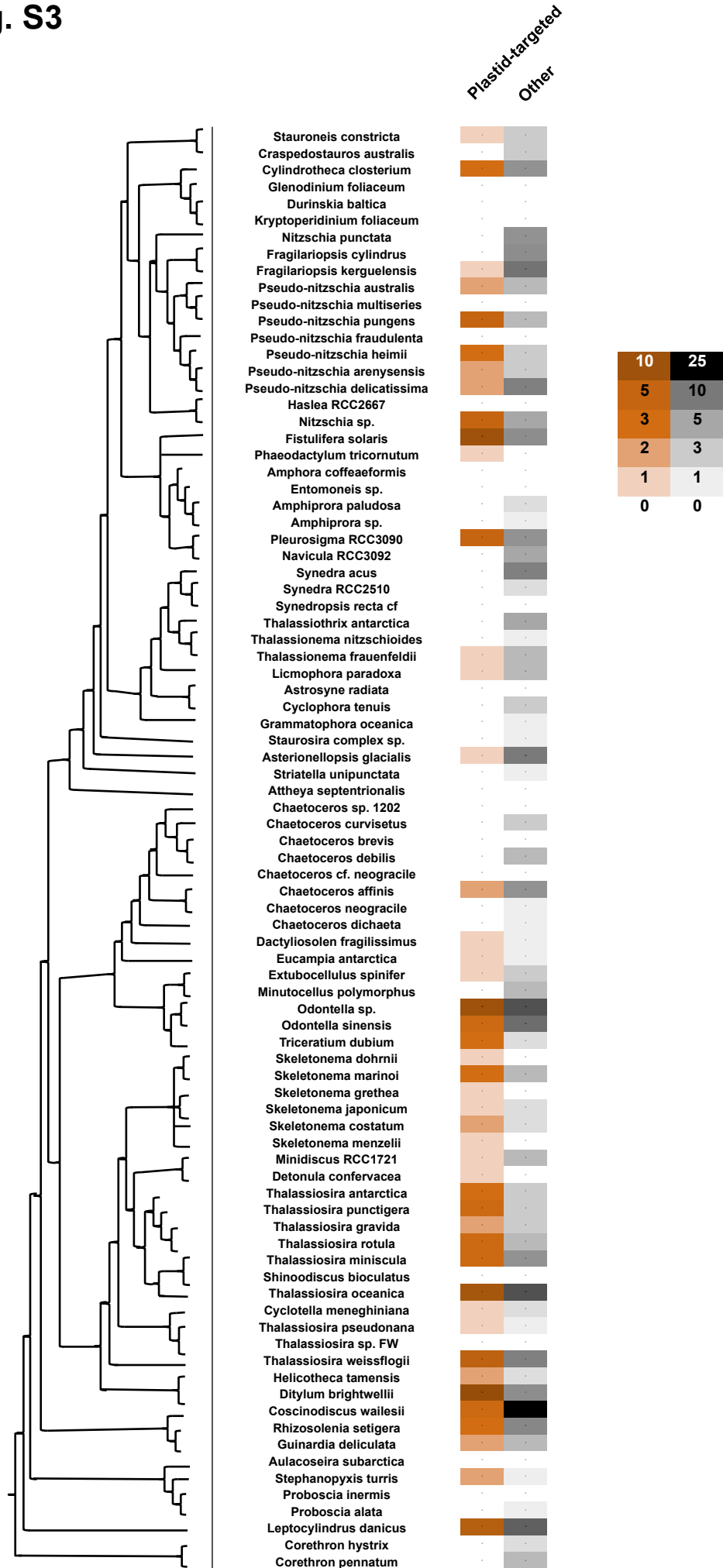


Figure S3. Evolutionary distributions of diatom iota-carbonic anhydrases. This figure shows the number of evolutionarily non-redundant iota-carbonic anhydrases, with inferred chloroplast targeting sequences or otherwise, identified by reciprocal BLAST search of the characterised *T. pseudonana* protein (Thaps_264181), using similar methodology to Fig. S3. Cells are shaded according to the number of copies of proteins identified.