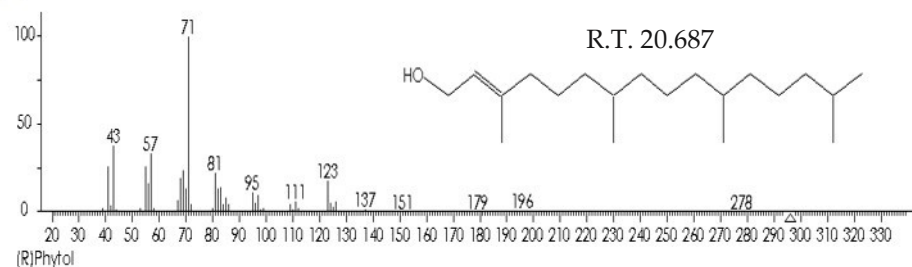
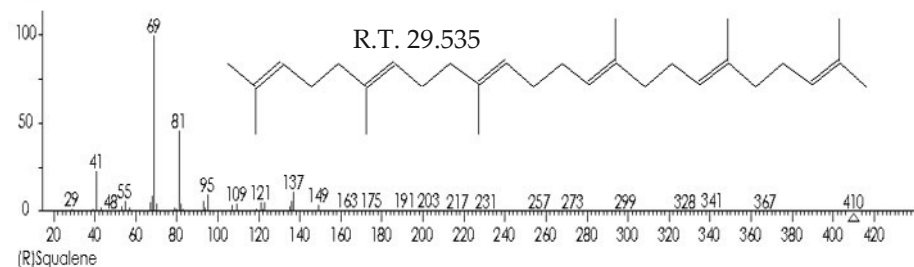


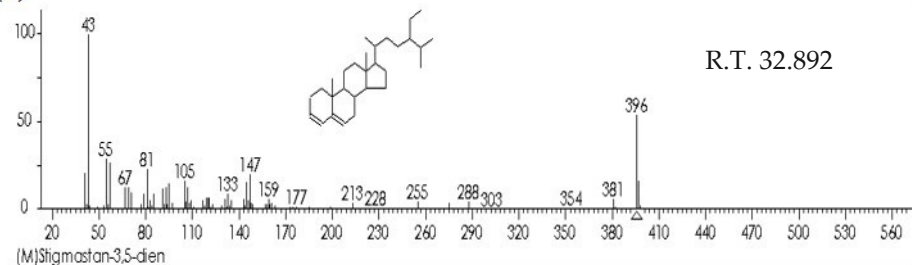
(a)



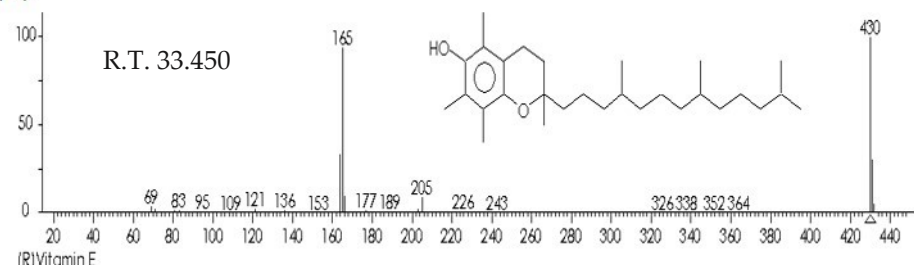
(b)



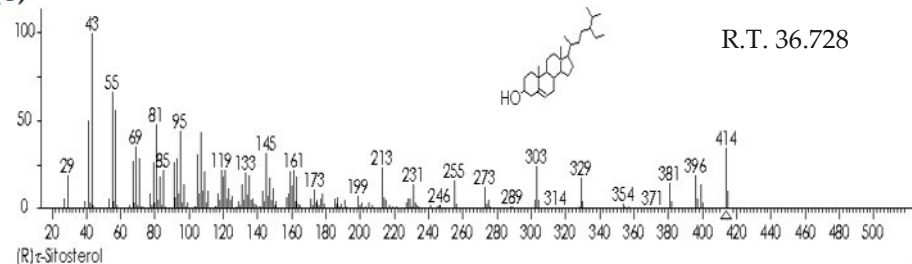
(c)



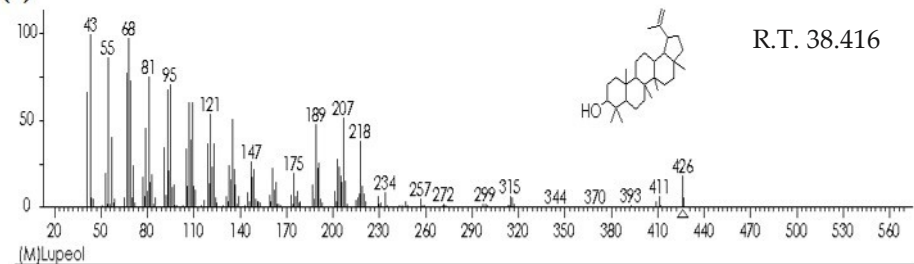
(d)



(e)



(f)



**Supplementary figure 1. GC-MS analysis of acetone extract of *Ficus crocata* (Miq.) Mart. ex Miq. leaves.** Chromatogram and structure of the compounds identified in Ace-EFc. (a) Phytol; (b) squalene; (c) Stigmasteran-3,5-dien; (d) alpha-tocopherol; (e) β-sitosterol; (f) lupeol. R.T: retention time.