

Figure S1. WT F01 (right) and CCD7M14 (left) plants growing in soil mixed with seeds of *P. aegyptiaca* at a concentration of 20 mg seeds per kg soil.

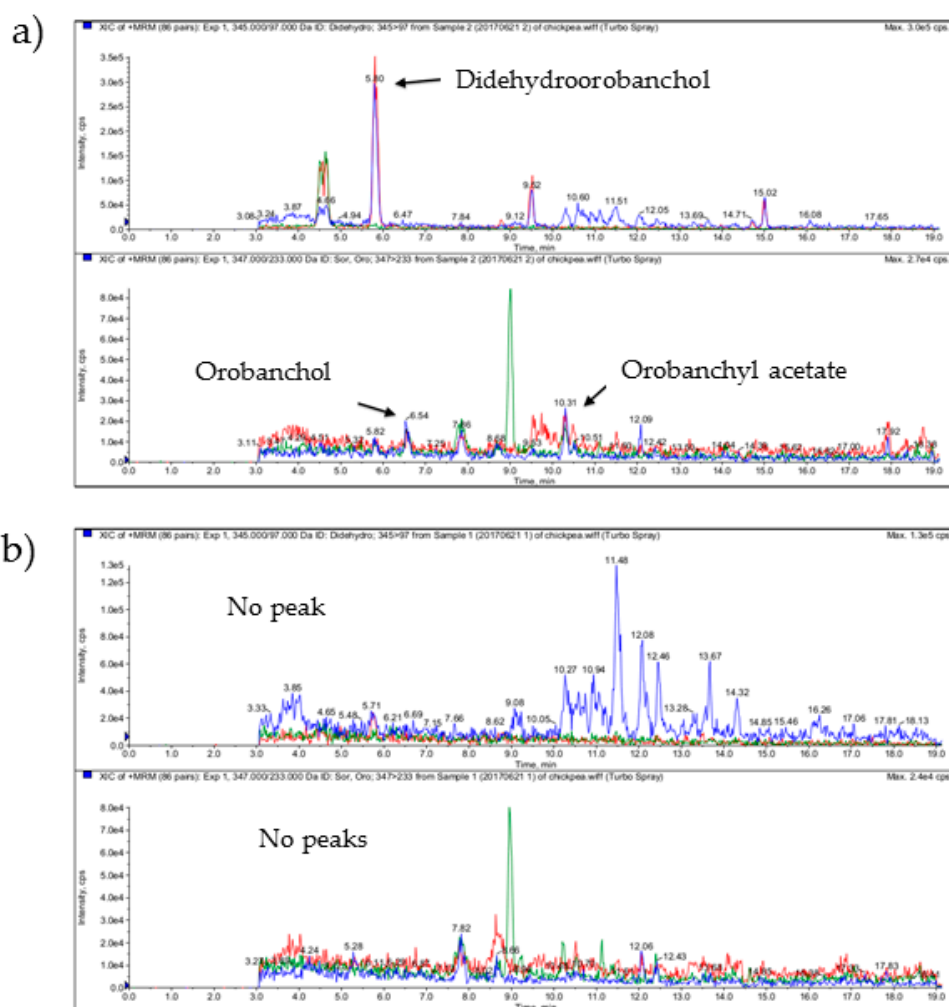


Figure S2. Selected reaction monitoring (SRM) chromatograms of WT F01 (a) and CCD7M14 (b) root exudates. Determination of SLs was based on the retention time and transition of m/z 345 > 97 for didehydroorobanchol and 347 > 233 for orobanchol and orobanchyl acetate.