
Supplementary Material

Comparative Study of Chemical Composition and Antioxidant Activity of Essential Oils and Crude Extracts of Four Characteristic *Zingiberaceae* Herbs

Milena Ivanović, Kaja Makoter and Maša Islamčević Razboršek *

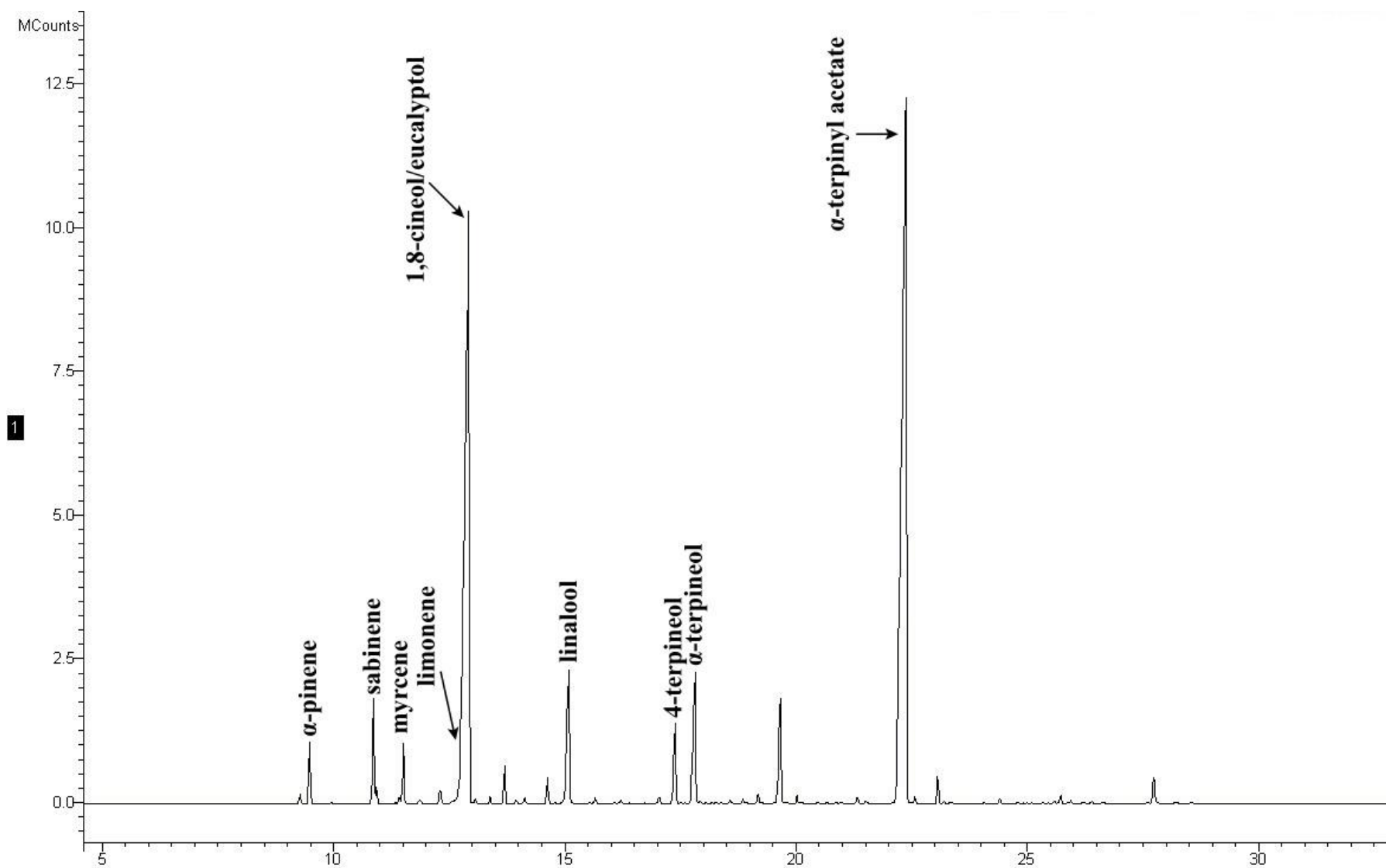


Figure S1. Typical GC-MS/MS chromatogram of cardamom (*Elettaria cardamomum* L. Maton) essential oil.

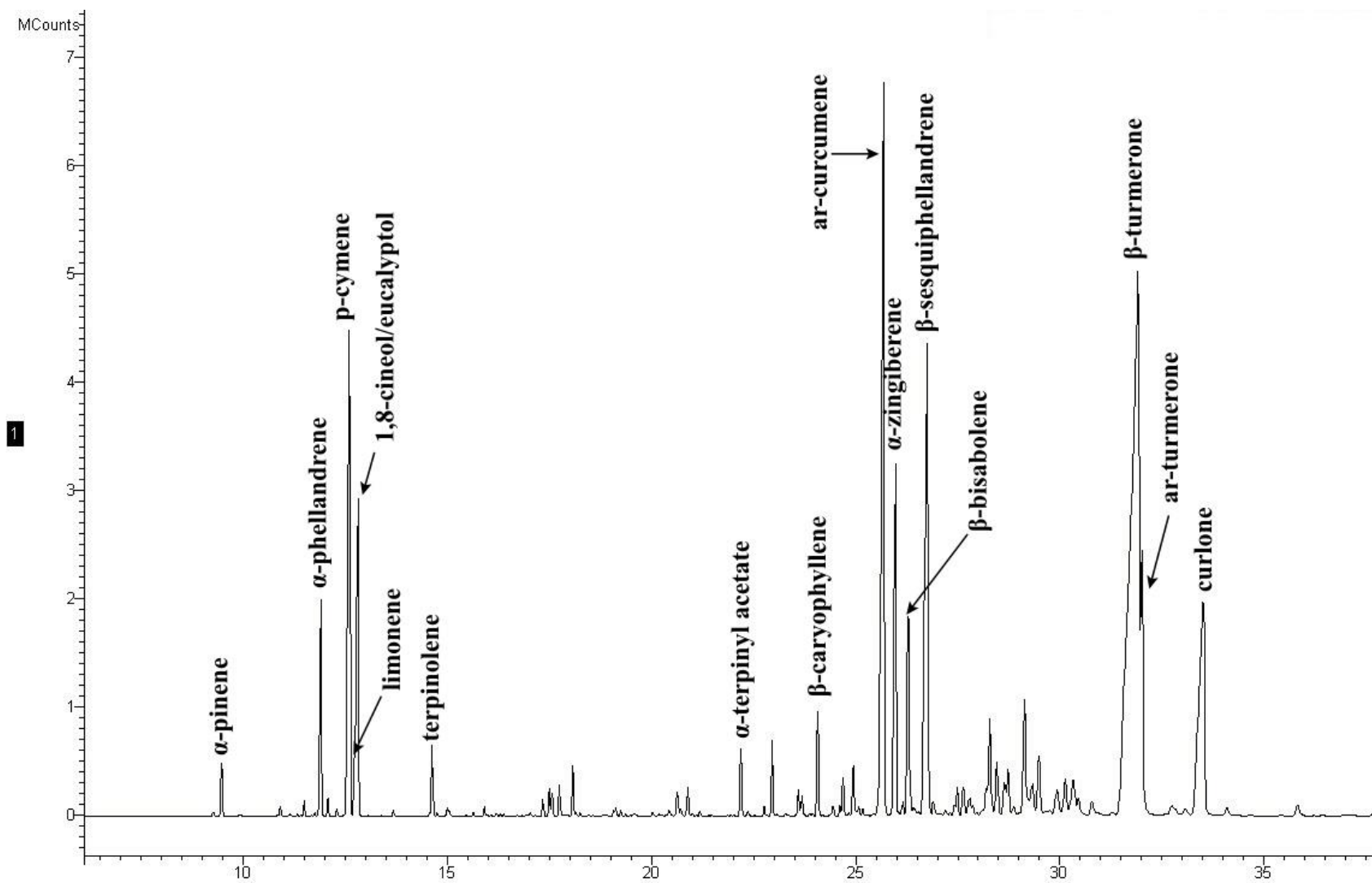


Figure S2. Typical GC-MS/MS chromatogram of turmeric (*Curcuma longa* L.) essential oil.

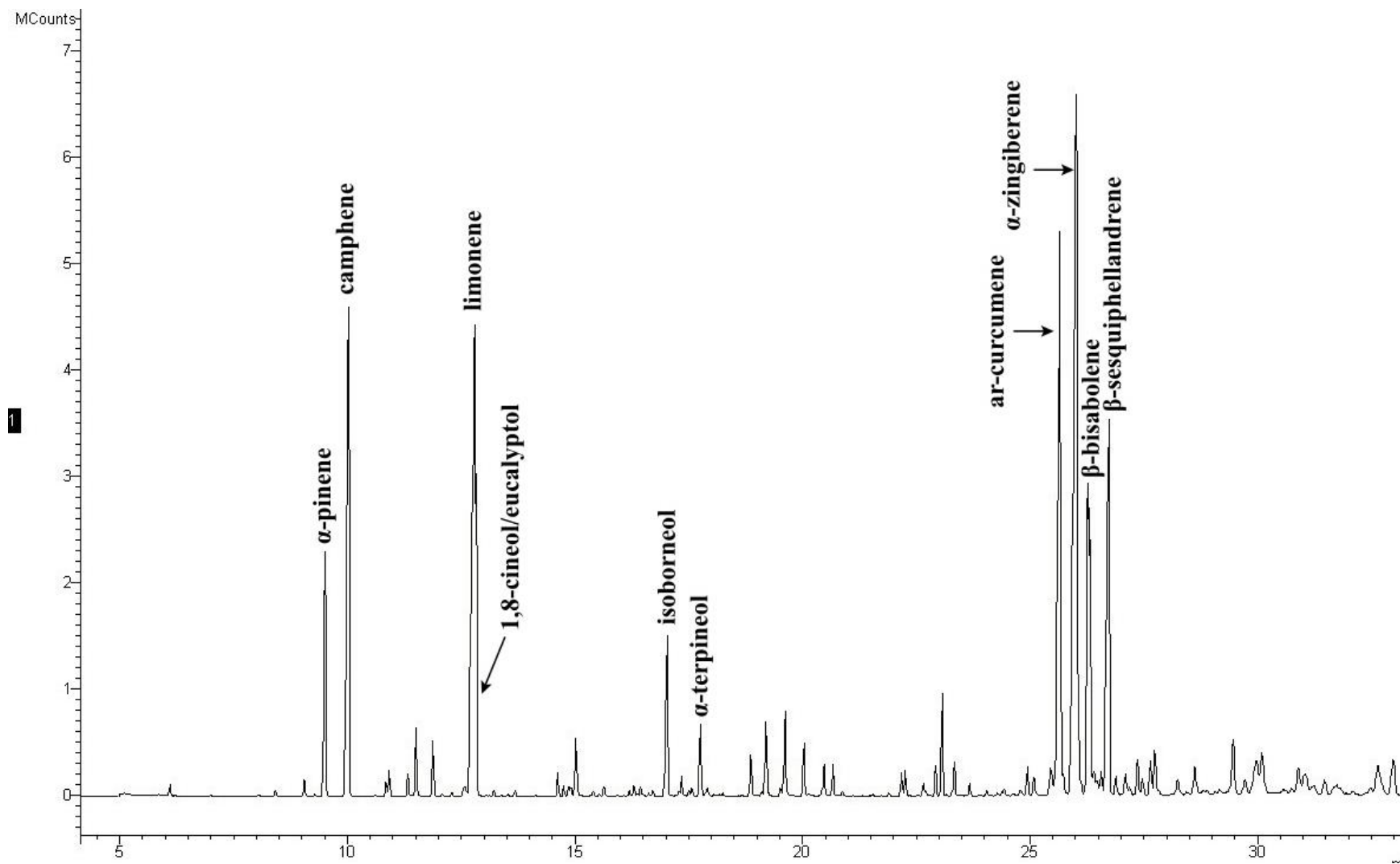


Figure S3. Typical GC-MS/MS chromatogram of ginger (*Zingiber officinale* Roscoe) essential oil.

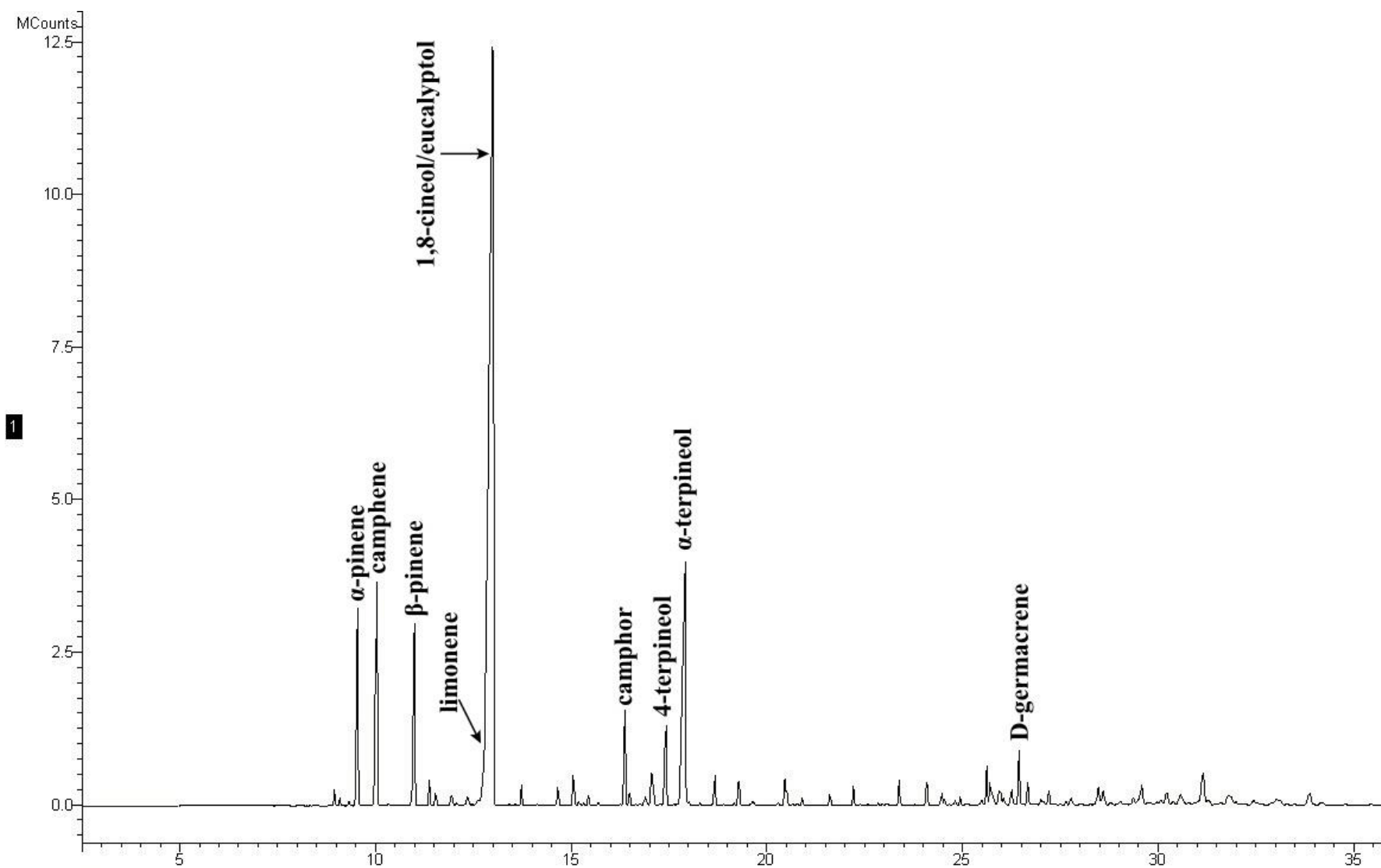


Figure S4. Typical GC-MS/MS chromatogram of galangal (*Alpinia officinarum* Hance) essential oil.