

Supplementary material

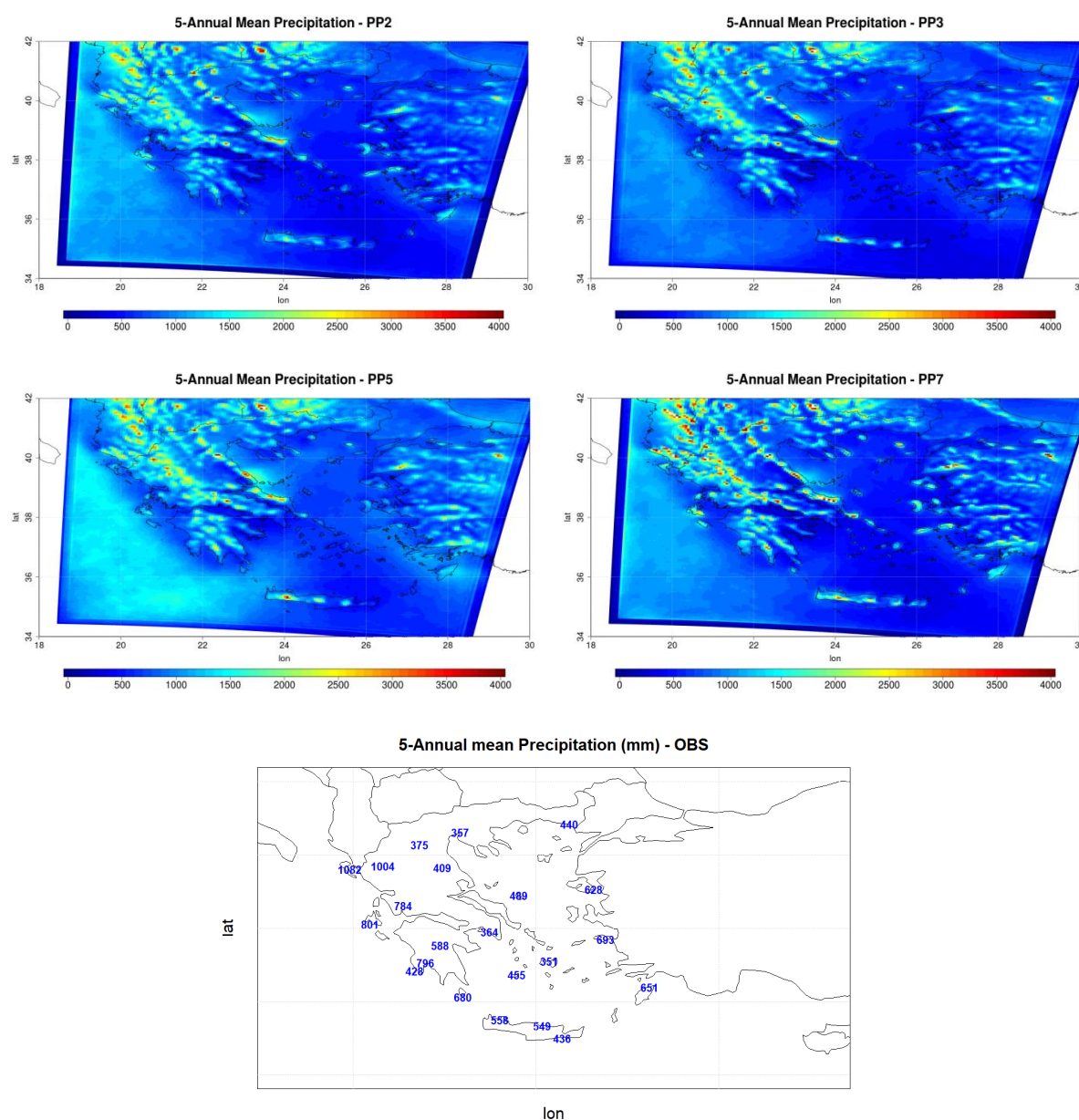
# A sensitivity study of high resolution climate simulations for Greece

Nadia Politi<sup>1,2,\*</sup>, Athanasios Sfetsos<sup>1</sup>, Diamando Vlachogiannis<sup>1</sup>, Panagiotis T. Nastos<sup>2</sup> and Stylianos Karozis<sup>1</sup>

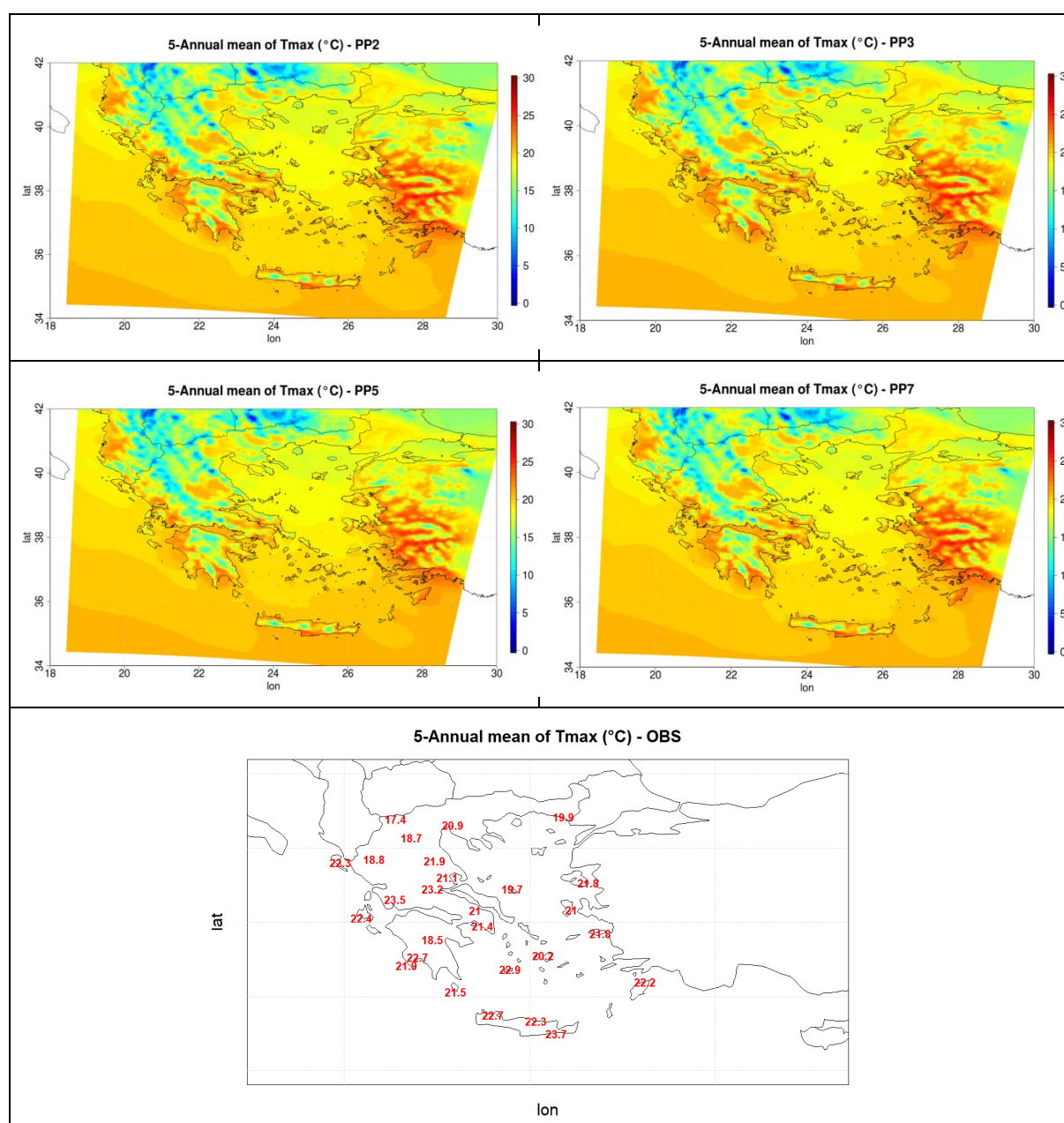
<sup>1</sup> Environmental Research Laboratory, INRaSTES, NSCR Demokritos; 15341 Agia-Paraskevi, Greece; [ts@ipta.demokritos.gr](mailto:ts@ipta.demokritos.gr) (A.S.); [mandy@ipta.demokritos.gr](mailto:mandy@ipta.demokritos.gr) (D.V.); [skarozis@ipta.demokritos.gr](mailto:skarozis@ipta.demokritos.gr) (S.K)

<sup>2</sup> Laboratory of Climatology and Atmospheric Environment, Faculty of Geology and Geoenvironment, National and Kapodistrian University of Athens, Greece; [nastos@geol.uoa.gr](mailto:nastos@geol.uoa.gr)

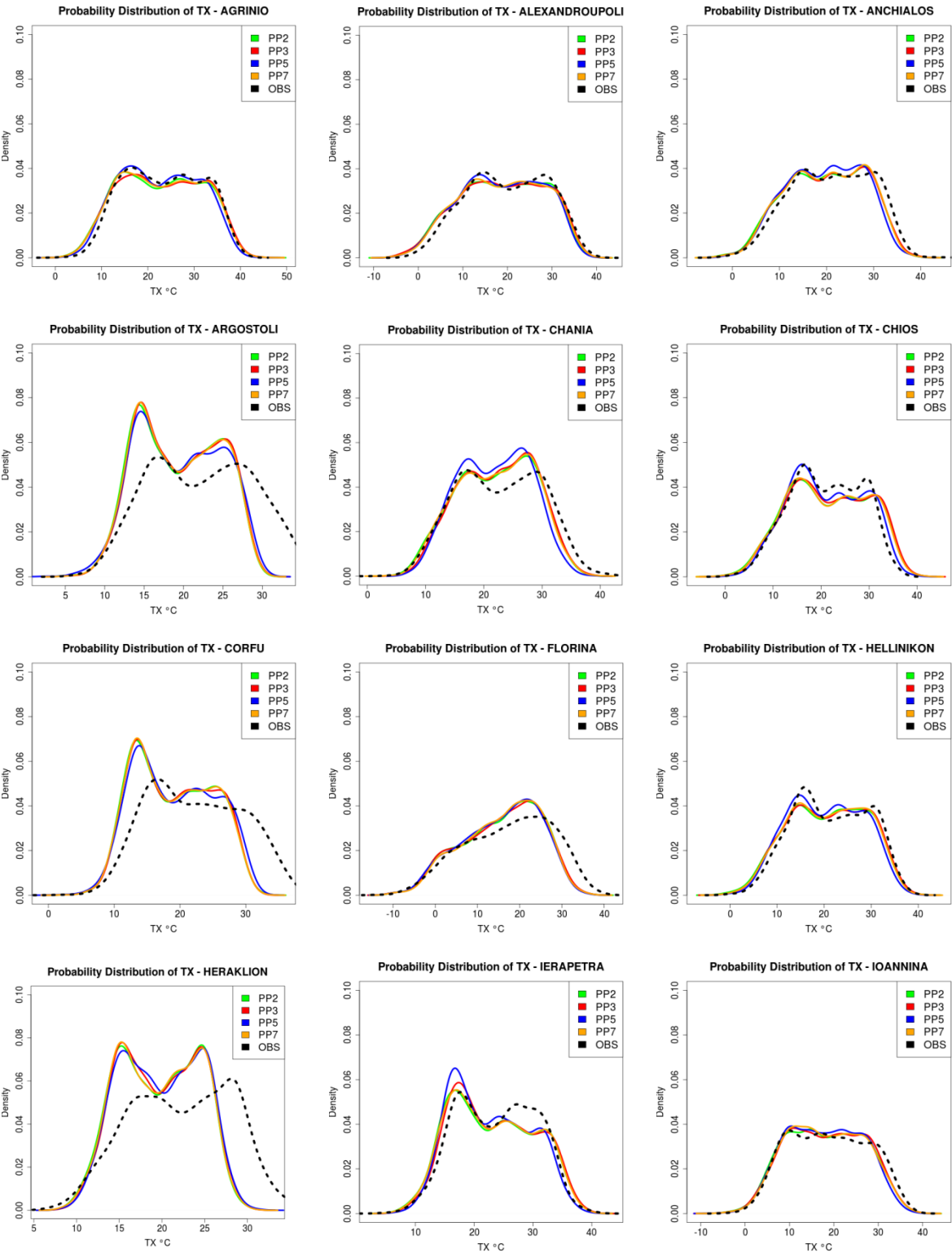
\* Correspondence: [nadiapol@ipta.demokritos.gr](mailto:nadiapol@ipta.demokritos.gr)

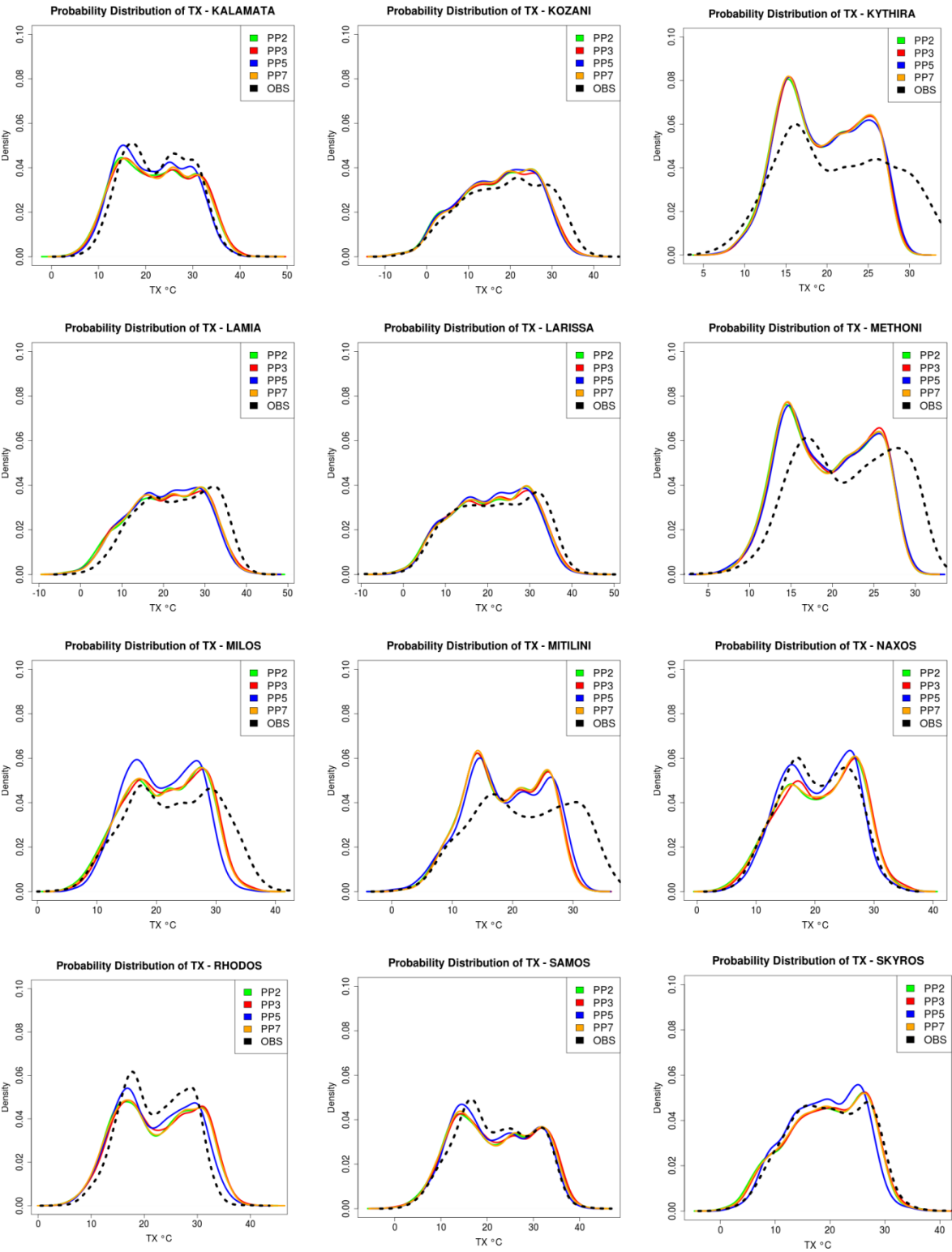


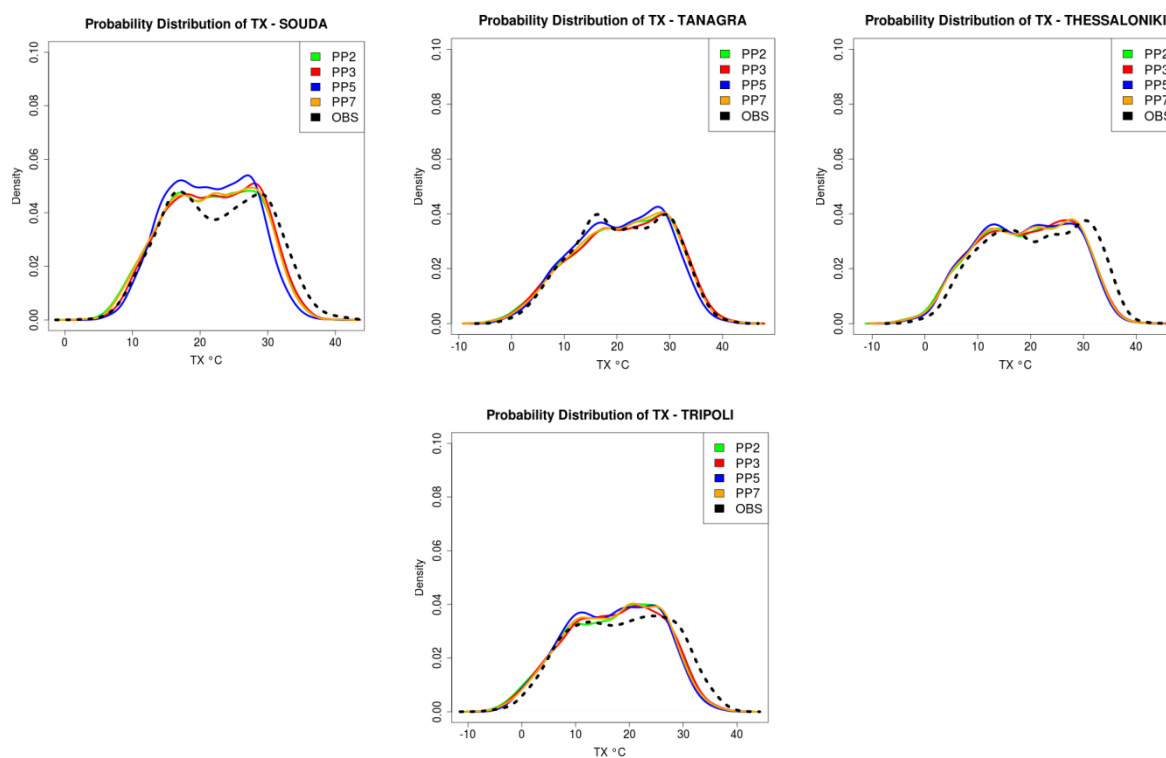
**Figure S1.** WRF Spatial distribution of the annual precipitation (in mm) for the 5-km resolution of the region of Greece (D02), for the selected period 2000-2004.



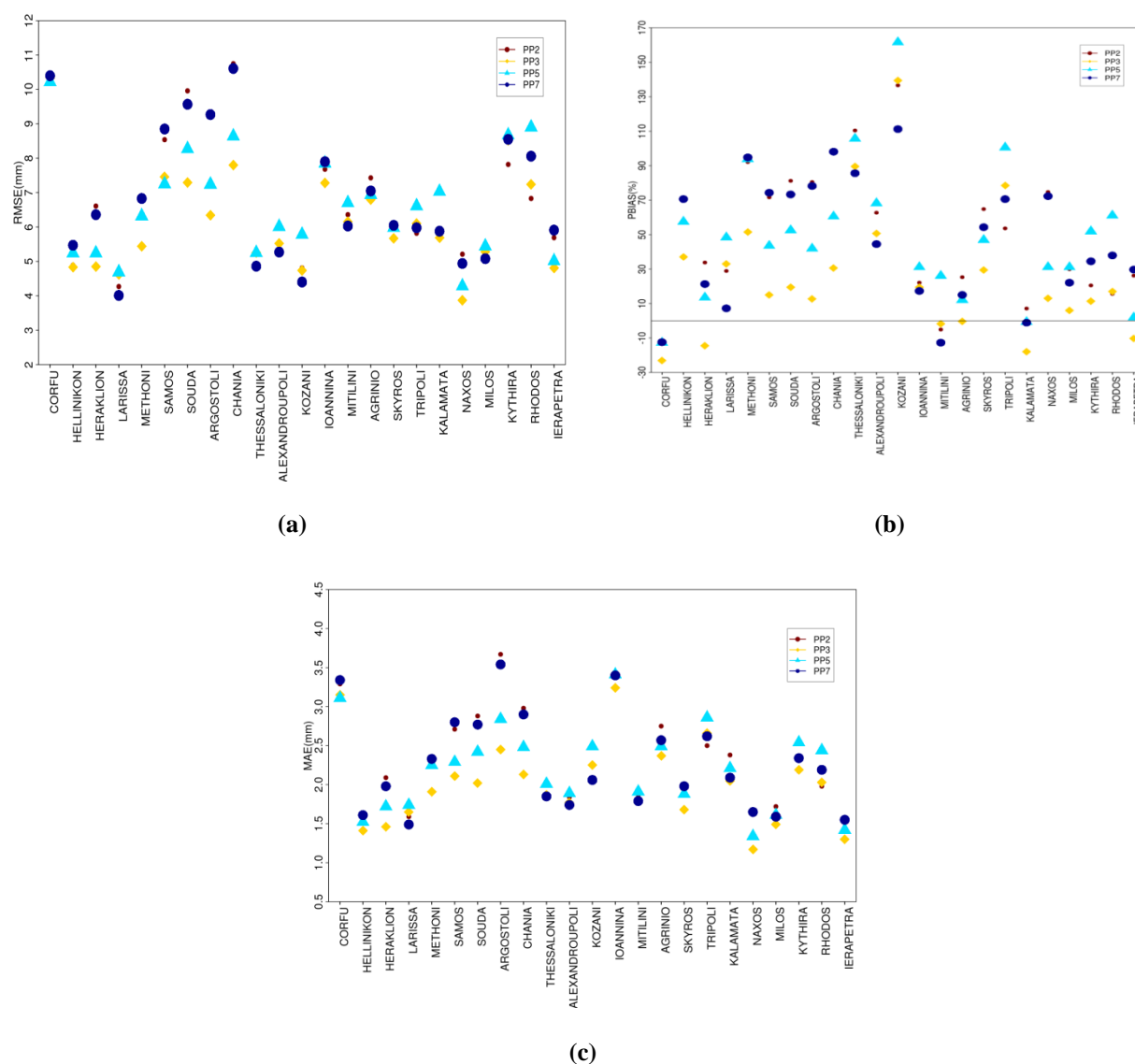
**Figure S2.** Spatial distribution of 5-annual mean maximum temperature (TX) for the 5-km region of Greece (D02), for the selected period 2000-2004.







**Figure S3.** Comparison of the observed maximum temperatures by weather station and the four simulated results in terms of probability distributions. The dashed line indicates the probability distribution of the observations.



**Figure S4.** (a) Root mean square error, (b) pbias and (c) correlation coefficient of precipitation (RR) per HNMS station, for the four different physics parameterisations schemes (PP2, PP3, PP5, PP7) for 2000-2004.



© 2020 by the authors. Submitted for possible open access publication under the terms and conditions of the Creative Commons Attribution (CC BY) license (<http://creativecommons.org/licenses/by/4.0/>).