

Supplemental Figures

Figure S1

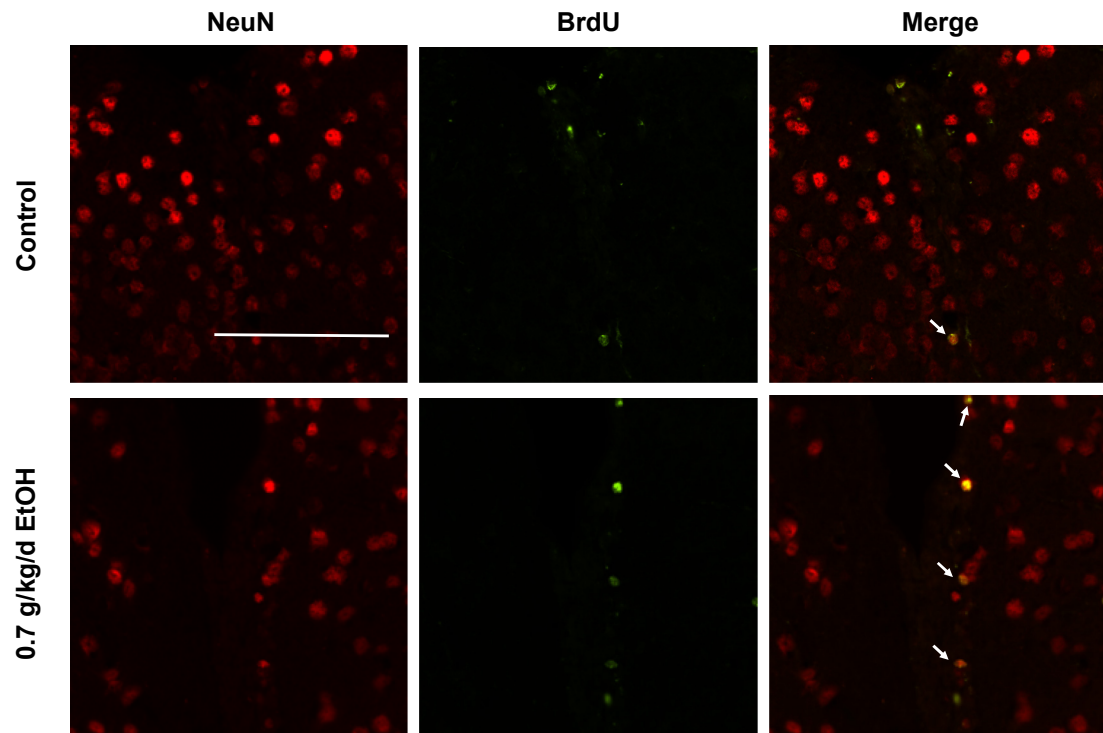


Figure S1. Effect of LAC on baseline neurogenesis in the SVZ. Representative double staining of BrdU and NeuN at 60x magnification. Scale bar = 100 μ m.

Figure S2

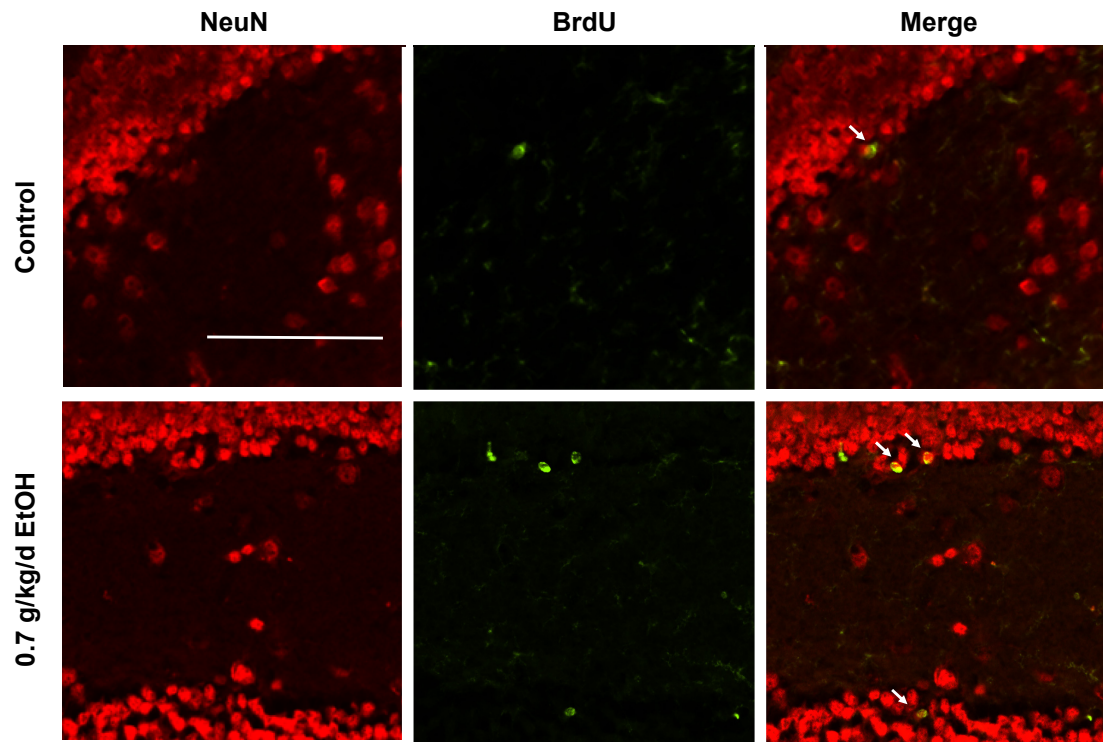


Figure S2. Effect of LAC on baseline neurogenesis in the DG. Representative double staining of BrdU and NeuN at 60x magnification. Scale bar = 100 μ m.

Figure S3

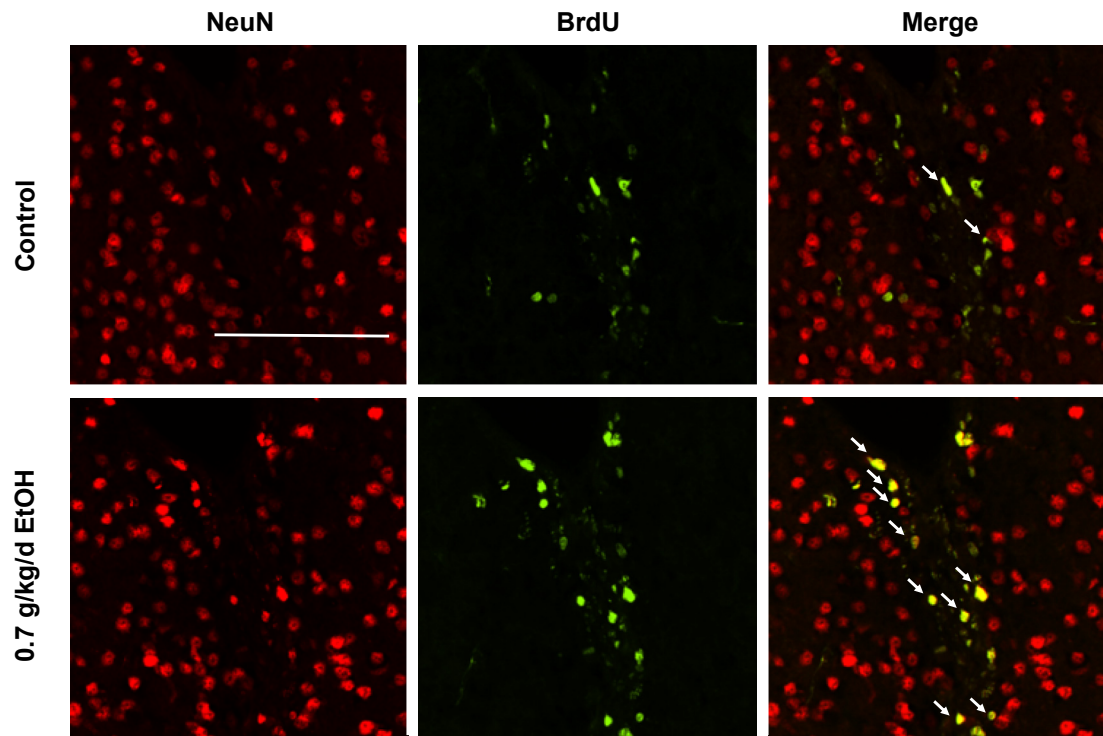


Figure S3. Effect of LAC on post-ischemic neurogenesis in the SVZ. Representative double staining of BrdU and NeuN at 60x magnification. Scale bar = 100 μ m.

Figure S4

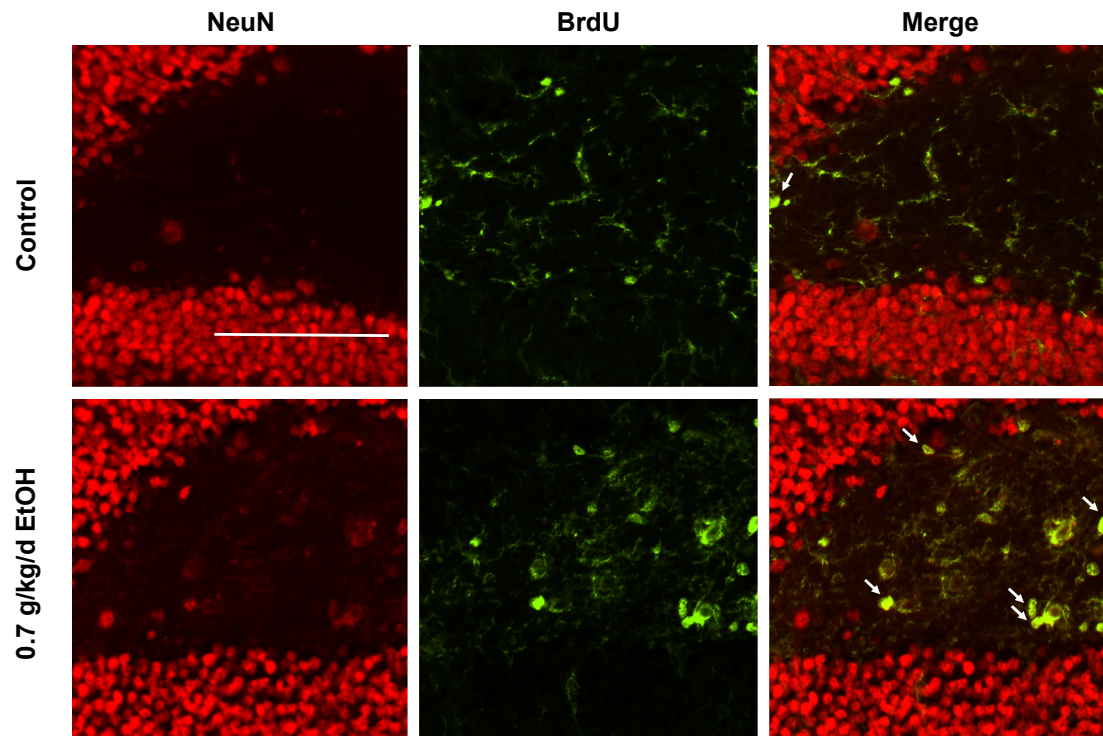


Figure S4. Effect of LAC on post-ischemic neurogenesis in the DG. Representative double staining of BrdU and NeuN at 60x magnification. Scale bar = 100 μ m.